



User Manual

Date

Mar 2021

Version 1.0.0

Planon Connect for IAdea User Manual

Americas

20 Fairbanks, Ste, 170
Irvine, CA 92618
California, U.S.A

Taiwan

114, 3F, No. 21
Ln. 168, Xingshan Rd.
Neihu Dist., Taipei, Taiwan, R.O.C.



Introduction

“Planon Connect for IAdea” is an app in Planon system to remotely monitor and control IAdea panel.

Purpose

This document describes the steps of the Planon Connect for IAdea (referred to as "IAdea app") usage to support remotely monitor and control.

Target Audience

The reader is assumed to be the end user of Planon system.

Applicable IAdea Products

This document applies the following IAdea products with documented firmware versions:

- XDS-1078: 2.2.3
- XDS-1088: 2.2.3
- XDS-1078-A9 / WRP-1000: 3.3.1

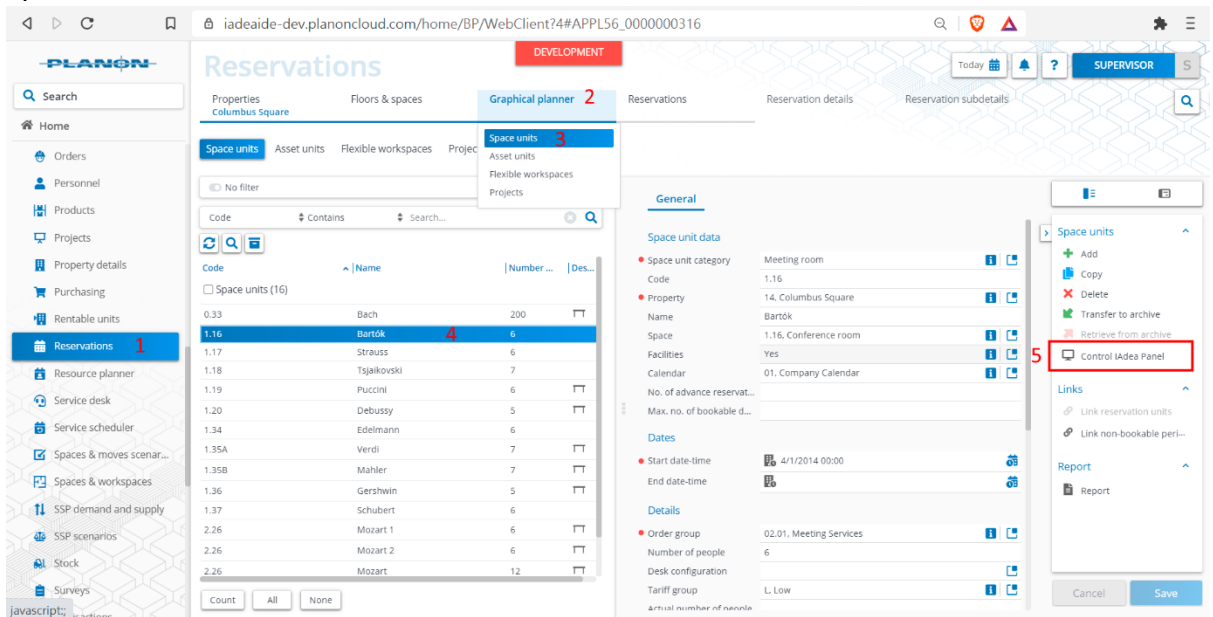
Applicable Planon Environment

The following software versions have been tested to generate the documented results:

- Planon Build 65
- Planon Connect for IAdea V1.0.6

Usage Steps

1. Select space unit with IAdea panel
Core TSIs -> Reservations -> Graphical planner -> Space units -> Select space unit -> Control IAdea Panel

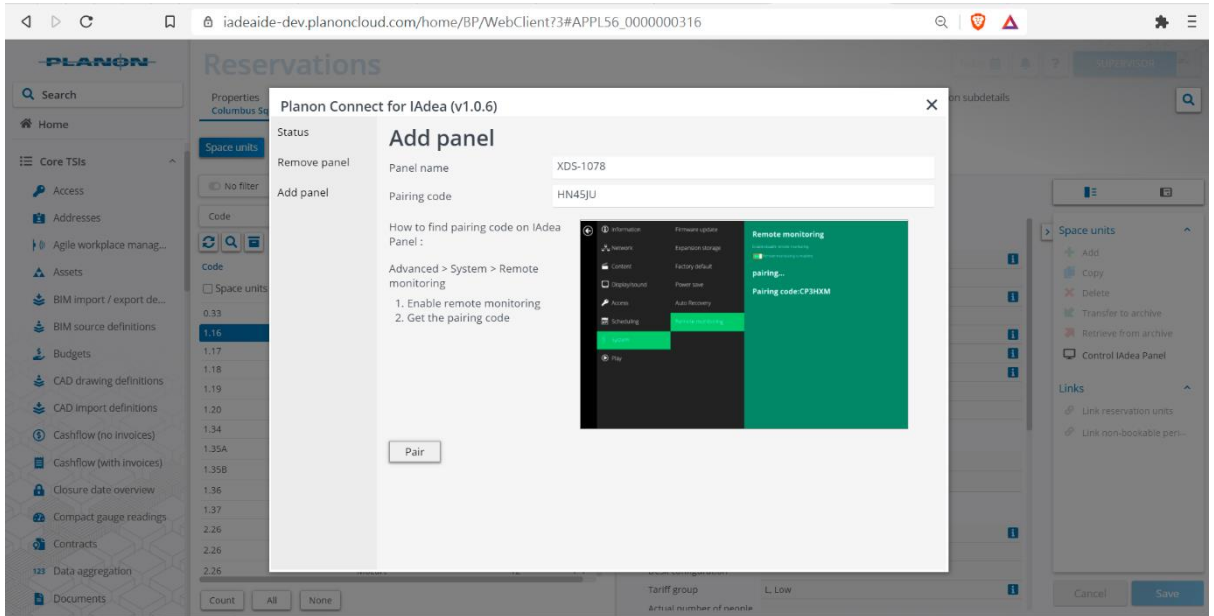


The screenshot shows the Planon Connect for IAdea web application. The main navigation menu on the left includes options like Home, Orders, Personnel, Products, Projects, Property details, Purchasing, Rentable units, Reservations (highlighted with a red '1'), Resource planner, Service desk, Service scheduler, Spaces & moves scenar..., Spaces & workspaces, SSP demand and supply, SSP scenarios, Stock, and Surveys. The main content area is titled 'Reservations' and shows a list of space units for 'Columbus Square'. The 'Space units' dropdown menu is open, showing options like 'Space units' (highlighted with a red '2'), 'Asset units', 'Flexible workspaces', and 'Projects'. The 'Space units' option is further expanded, showing 'Asset units', 'Flexible workspaces', and 'Projects'. The 'Control IAdea Panel' option is highlighted with a red box and the number 5. The right-hand side of the screen shows the 'General' details for the selected space unit, including 'Space unit data', 'Property', 'Space', 'Facilities', 'Calendar', 'Dates', and 'Details'.

Code	Name	Number	Des...
0.33	Bach	200	
1.16	Bartók	6	
1.17	Strauss	6	
1.18	Tsjajkovski	7	
1.19	Puccini	6	
1.20	Debussy	5	
1.34	Edelmann	6	
1.35A	Verdi	7	
1.35B	Mahler	7	
1.36	Gershwin	5	
1.37	Schubert	6	
2.26	Mozart 1	6	
2.26	Mozart 2	6	
2.26	Mozart	12	

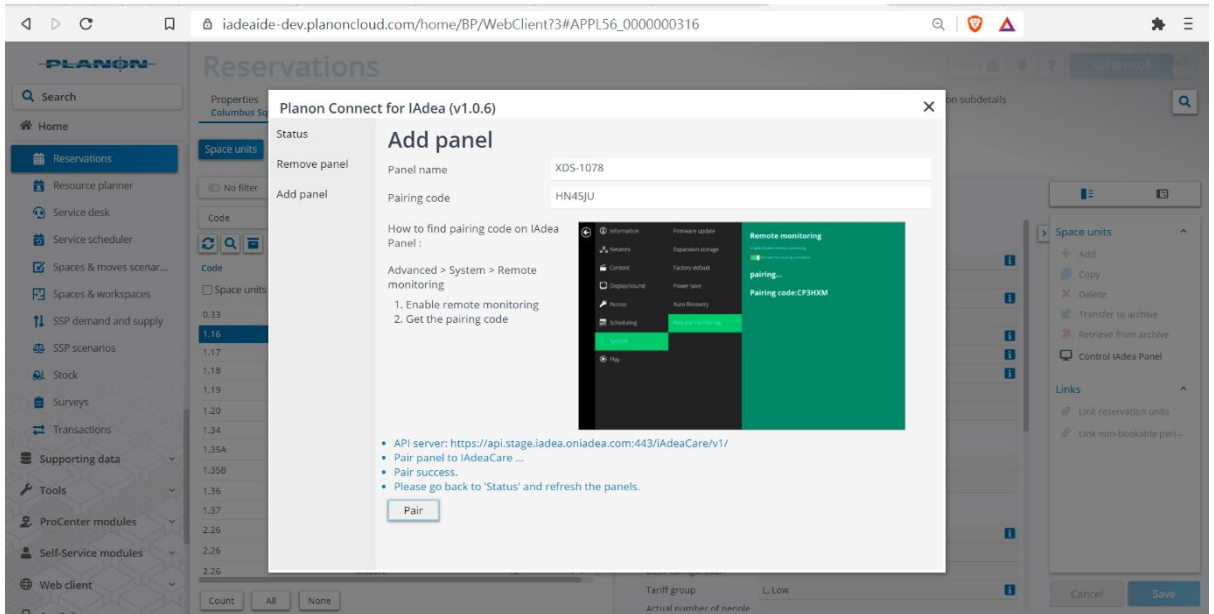
2. Onboard IAdea panel

Fill panel name and pairing code which is on IAdea panel. Then click “Pair”.



Once paired successfully, it shows information.

Panel URL will be assigned to corresponding space unit automatically.

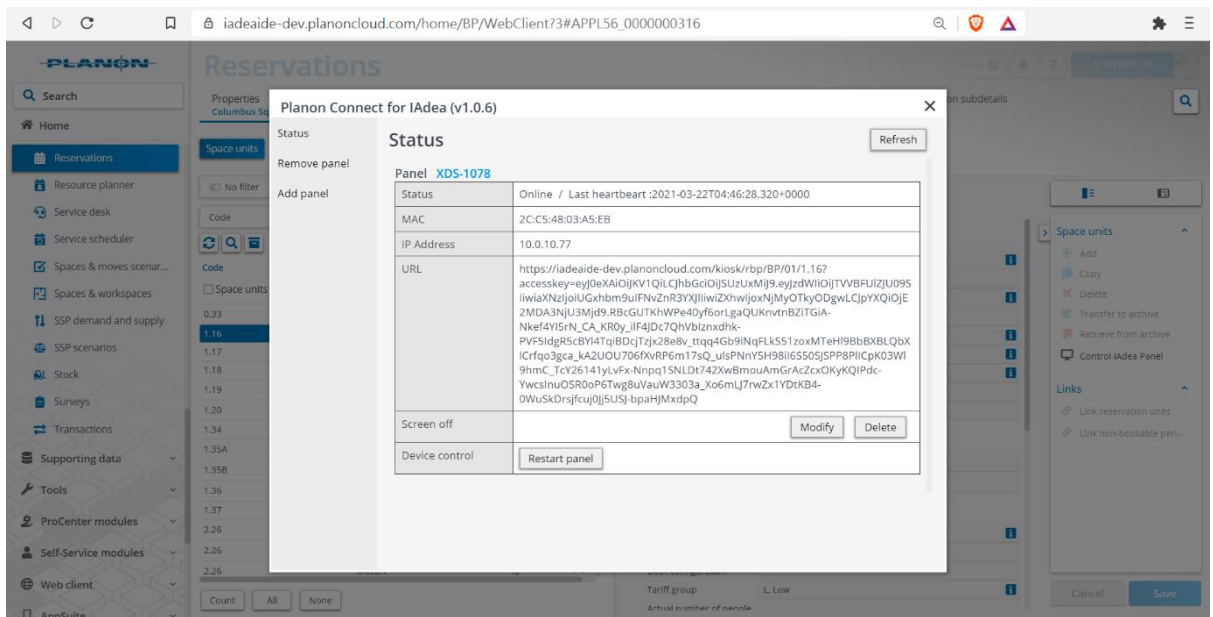


3. Monitor panel status

Click “Status” to show panel status.

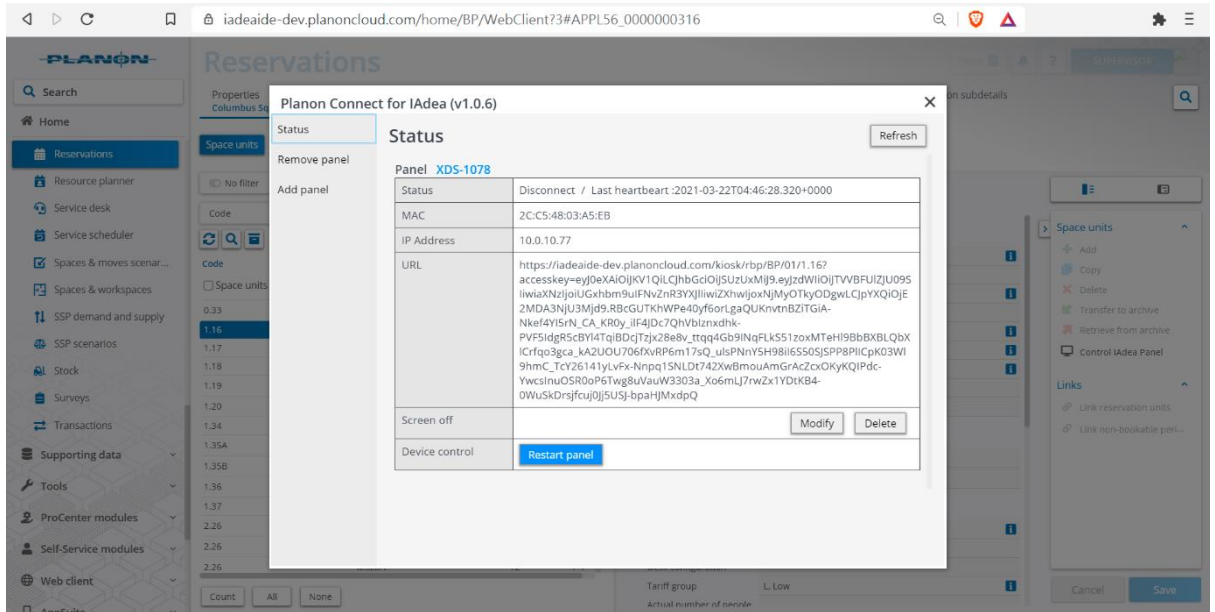
Report following status

- Heartbeat
- MAC address
- IP address
- URL (Assigned automatically)

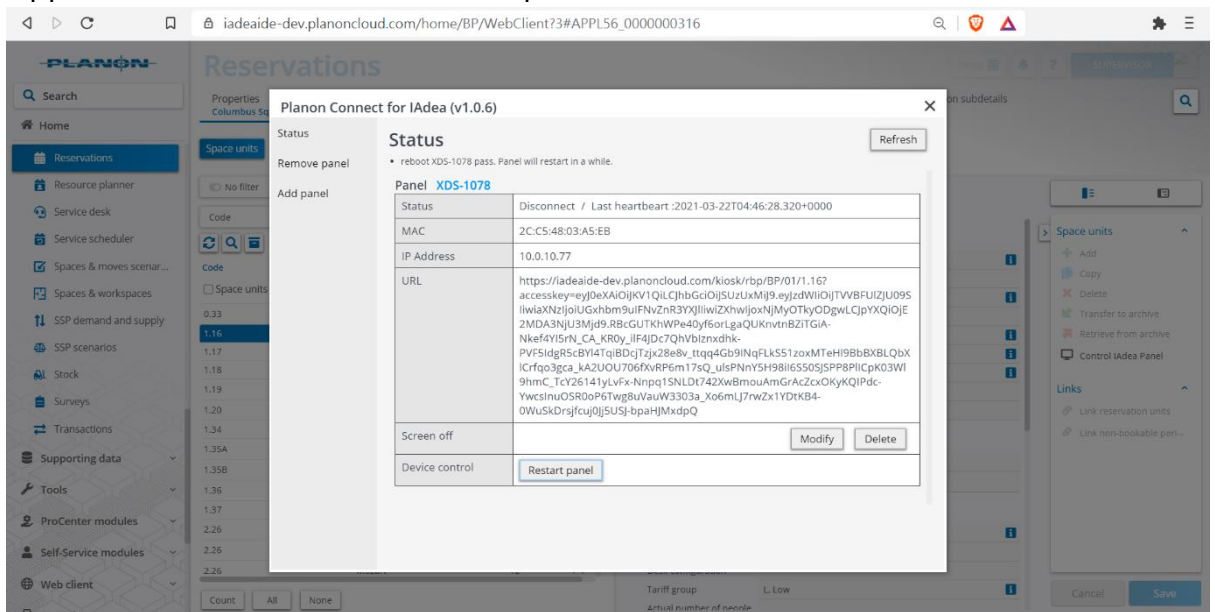


4. Restart panel

Click “Restart panel” to restart panel remotely.

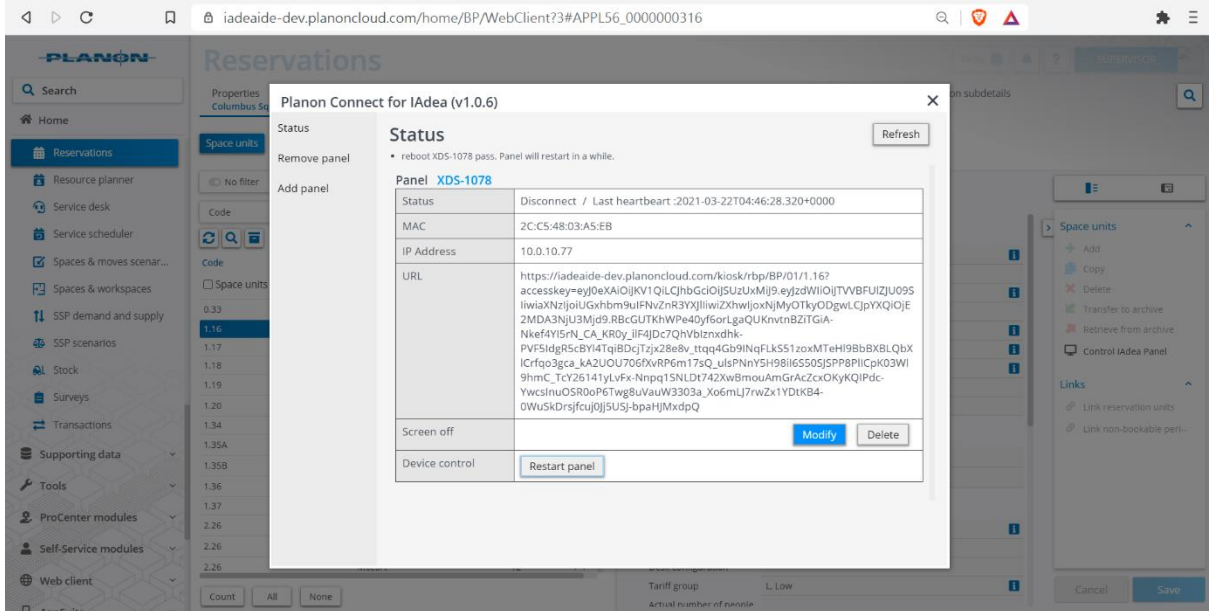


App will send a command to restart panel and show notice.

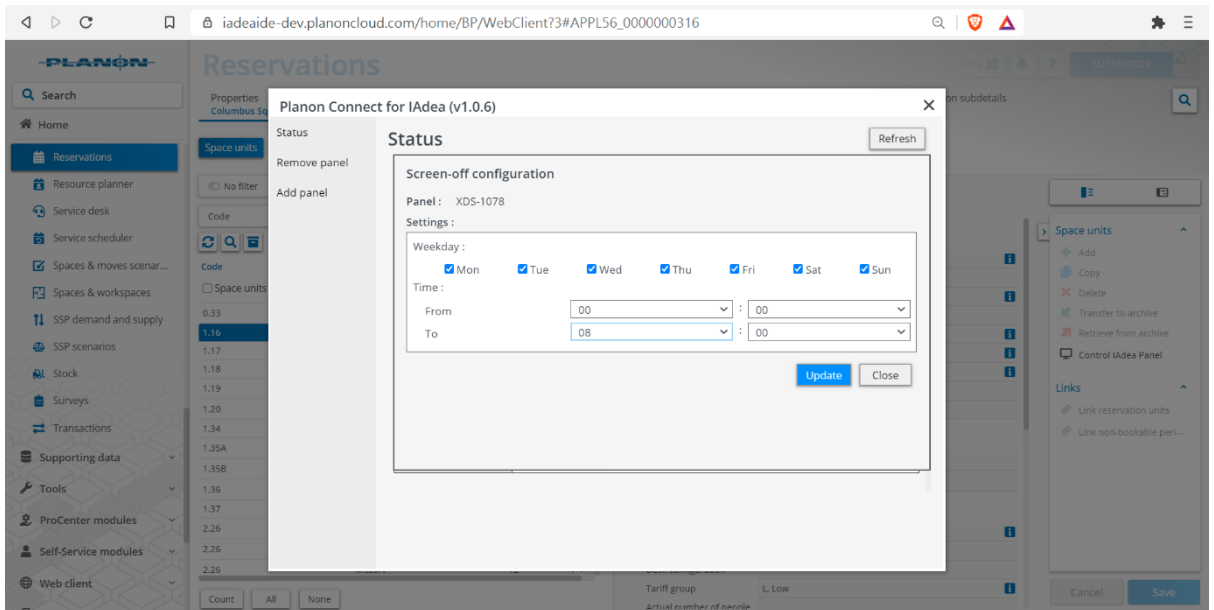


5. Set panel screen-off schedule

Click “Modify” on Screen off section to set screen-off schedule



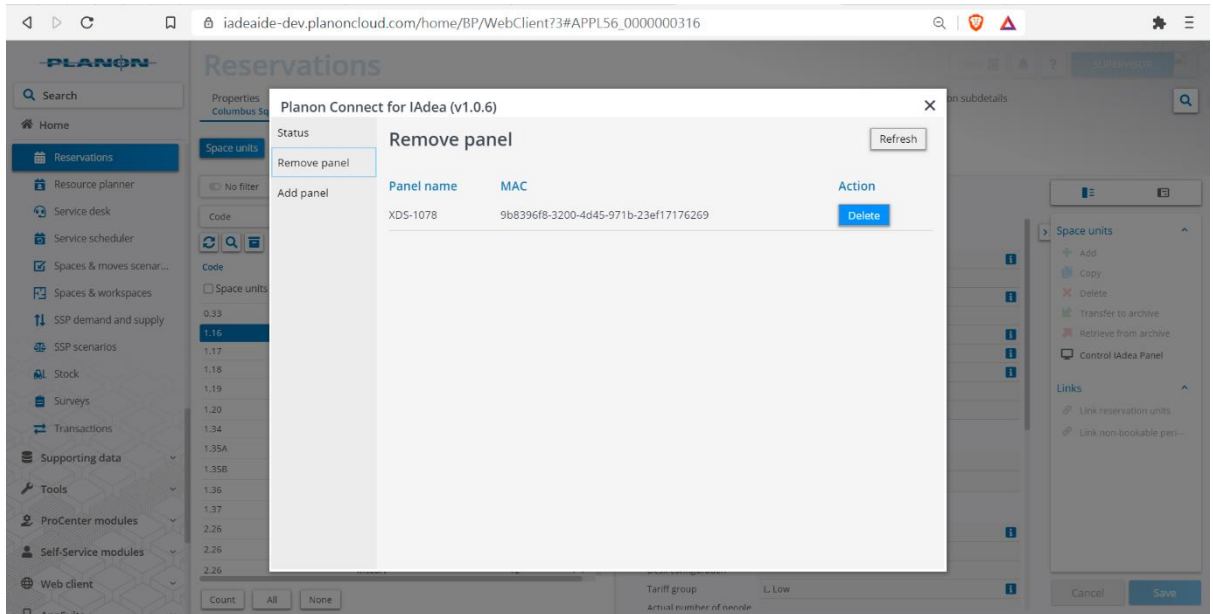
User can select multiple weekday and timeslot as screen-off schedule



6. Delete IAdea panel

Remove panel -> Delete. Remove the panel from Planon.

You can onboard the panel and assign it to another space unit after deleted it.





Further Information

For details on IAdea supported Intune functions, contact solution@IAdea.com.