



Installation Guide

Date

07/27/2020

Version 1.0.0

IAdea Signage & Irisys SafeCount Configuration Guide

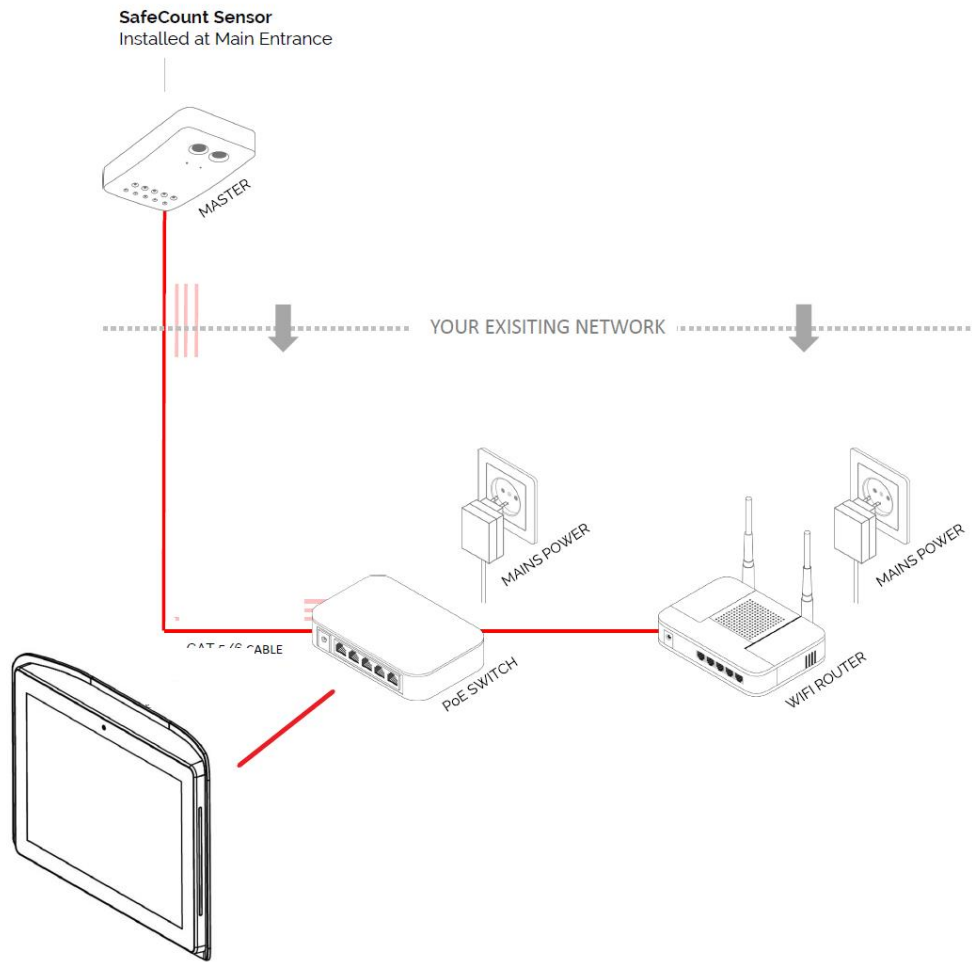
America

20 Fairbanks,
Ste, 170 Irvine, CA 92618
California, U.S.A

Taiwan

114, 3F, No. 21
Ln. 168, Xingshan Rd.
Neihu Dist., Taipei, Taiwan

INSTALLATION



(IAdea Room Panel series: 10", 15", 22")

SENSOR CONFIGURATION

Once installed, the SafeCount system needs some simple configuration in order to optimize for your building.

To start, open a browser on a **PC** and ensure that your PC is connected to the **192.168.0.XXX** Wi-Fi network. (Note: Change the IP setting on your Router or contact your network administrator the network ID is not **192.168.0.XXX**.)

Type in the following address in to the browser's address bar:

192.168.0.250/safecount

The **LOGIN PAGE** will then appear:

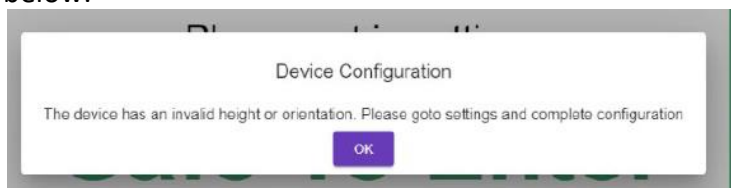


To access the **LOGIN PAGE** you will need to enter the following credentials:

USERNAME: admin

PASSWORD: installer

Once logged in, you will have access to the SafeCount system MAIN DISPLAY as shown below:



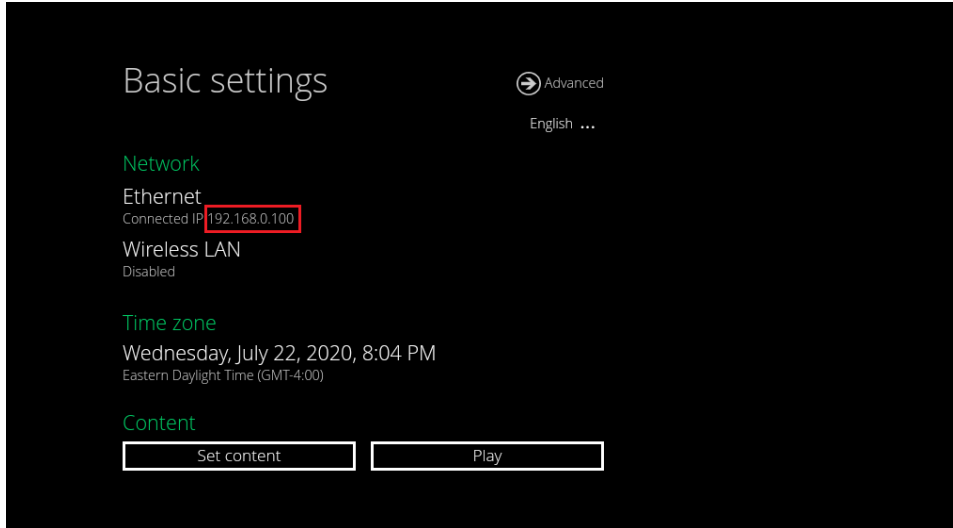
The **DEVICE CONFIGURATION** message that appears is expected as your SafeCount system has not yet been correctly configured.

Tap **OK** to acknowledge the warning and proceed with final configuration.

TABLET CONFIGURATION

1. Check network connection:

The IP address of the panel is displayed on the Home screen.

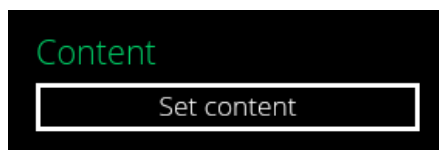


To get connected to the Sensor (Which IP is 192.168.0.250), make sure the IP of the panel is using the same network ID **192.168.0.XXX**. Change the IP setting on your Router or contact your network administrator if you don't have the same network ID.

2. Connect to the Sensor:

Note: Control your device with a mouse via USB if touch-screen is not supported on your panel.

- I. Press **Set content**:



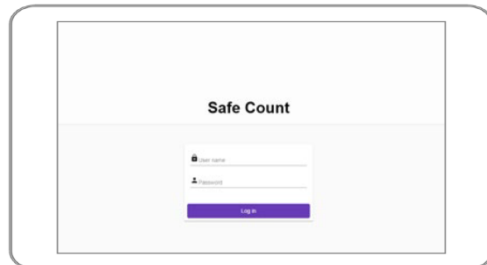
- II. Enter the follow URL:

192.168.0.250/safecount



- III. Press **Set**.
- IV. Press **Play**.

- V. The LOGIN PAGE will then appear:



- VI. To access the **LOGIN PAGE** you will need to enter the following credentials:

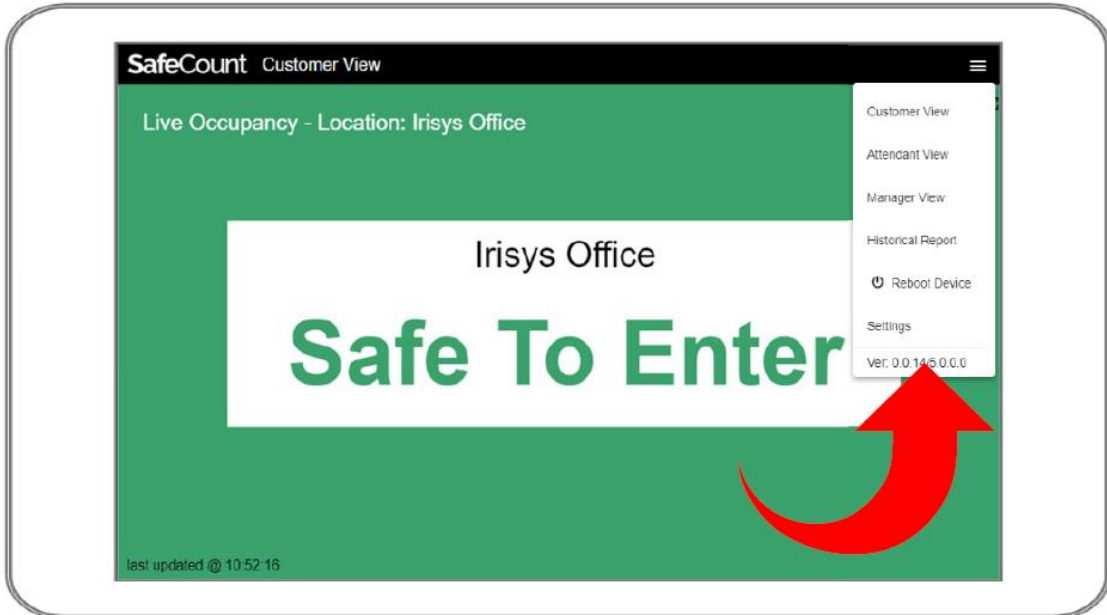
USERNAME: admin

PASSWORD: installer

- VII. Login to start using the system.

SYSTEM USAGE

To start using your new SafeCount System, tap the **MENU ICON** in the top right-hand corner of your screen, and then choose a **VIEW** from those displayed.



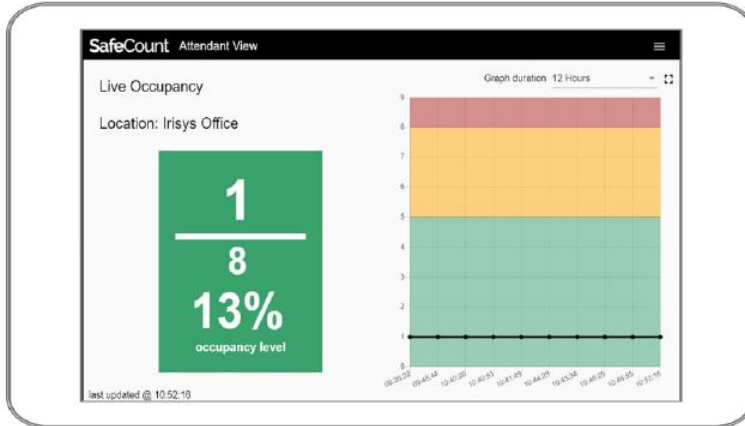
CUSTOMER VIEW

This **VIEW** is intended for display at the door or building entrance.



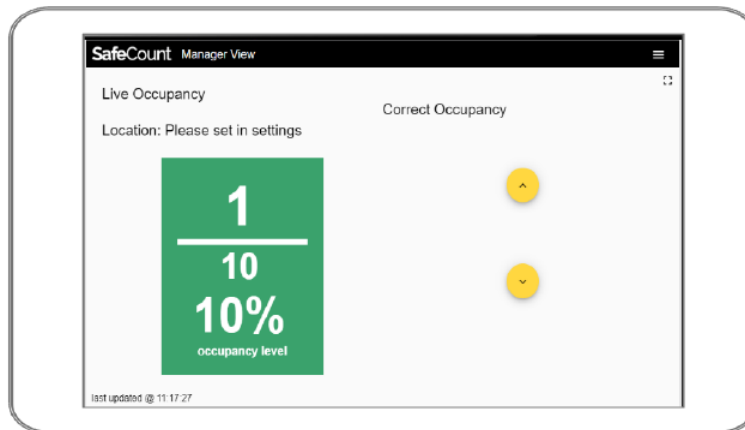
ATTENDANT VIEW

This **VIEW** is intended for use by a security guard or staff member who is in charge of managing door entries.



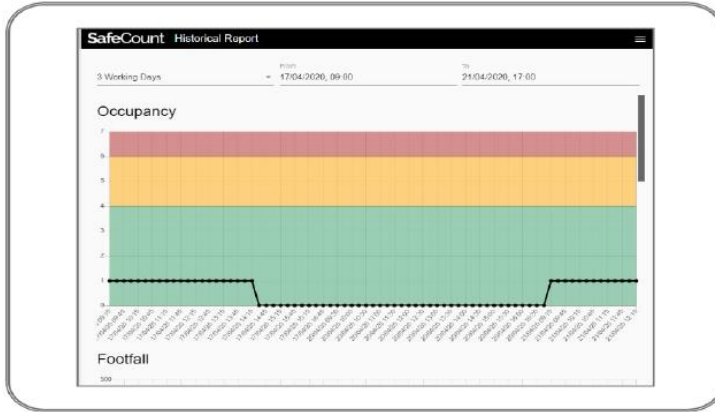
MANAGER VIEW

Here you can see the current **OCCUPANCY LEVEL** and where you have the ability to manual adjust the occupancy should the need arise. For example, if your building was already open prior to the system being started.



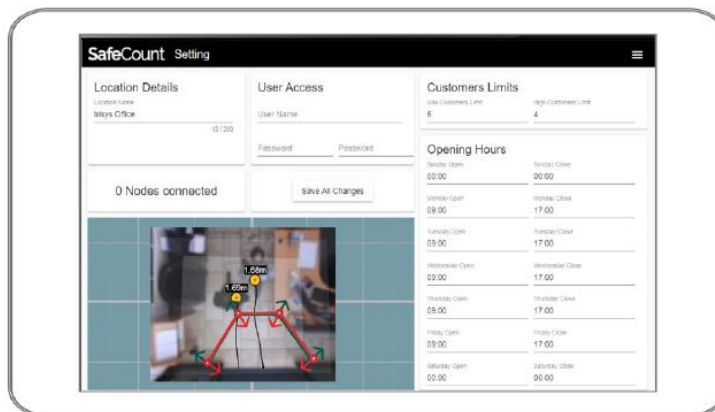
HISTORICAL REPORT

This VIEW allows you to see the occupancy figures from the previous day for comparison purposes. You can also scroll down this page for additional graphs.



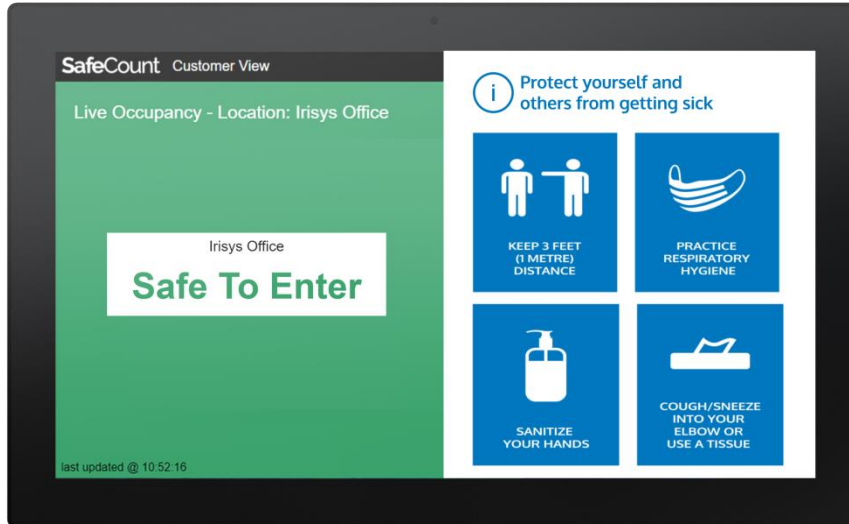
SETTINGS

As above already covered, this **VIEW** is for configuring the various occupancy limits and other settings relevant to your building.



Screen Customization

To promote safety awareness, customized contents (texts, images, videos, web pages and more) can be added to the screen. For example:

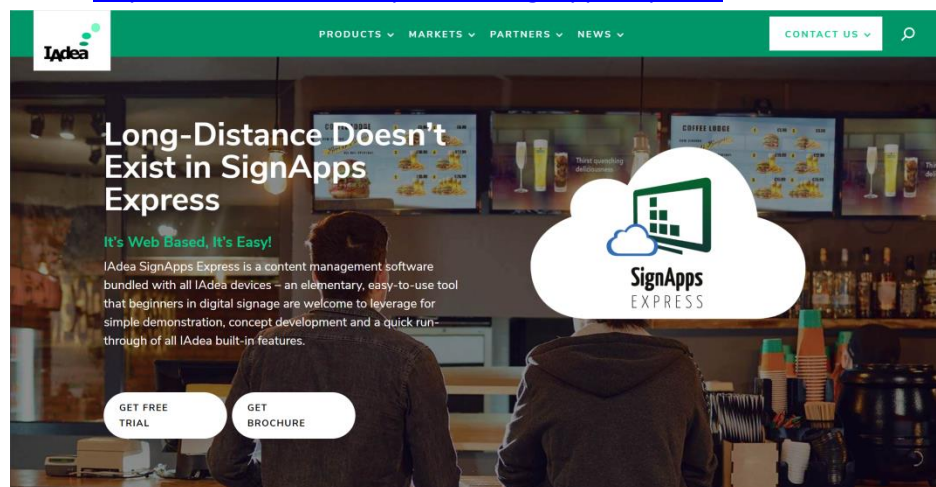


Example: A split layout is added to the screen and important messages are added to the right.

To create appealing visual presentations, to use of multimedia contents like text, images and videos will be essential. SignApp Express will help users to create signage and distribute it to multiple devices easily.

Add Awareness Messages to Your Screen

1. Install SignApp Express on your PC
 - I. Go to : <https://www.iadea.com/products/signapps-express/>

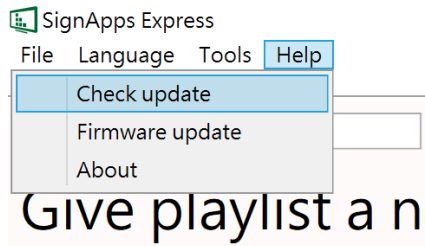


- II. Click **GET FREE TRIAL**.
- III. Fill the form and download the software.
- IV. Click **Submit**.

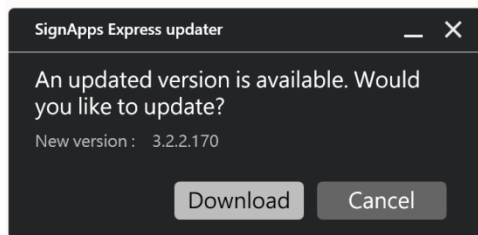
- V. Software will be downloaded.
- VI. Install it on your PC.

2. Update SignApp Express:

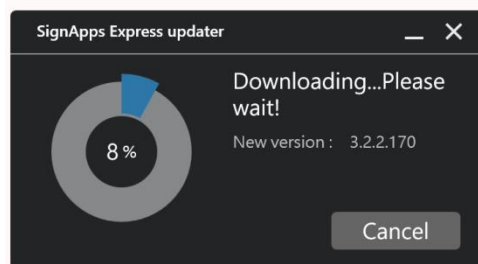
- I. Run **SignApp Express**.
- II. Go to **Help > Check update**:



- III. Click **Download** to get the latest version.



- IV. Wait for the download



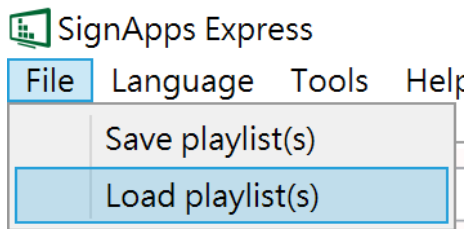
- V. Follow the on-screen instructions to install the new version.
- VI. Click **Finish** to launch **SignApp Express**.

3. Multimedia contents will be organized as **Playlists**. Follow these steps to add an awareness message session on the screen.


I. Download the pre-defined template:

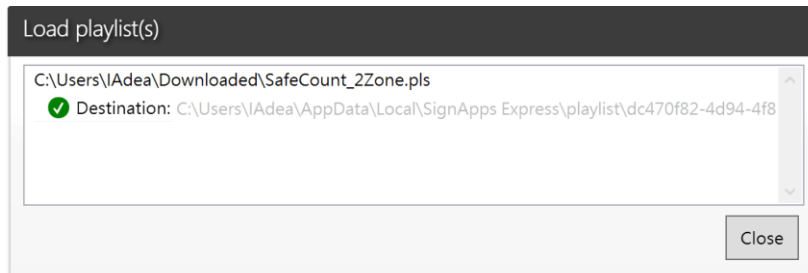
https://support.iadea.com/hc/en-us/article_attachments/900002624343/SafeCount_2Zone.pls

II. Go to the top left corner, click **File**, then click **Load playlist(s)**:

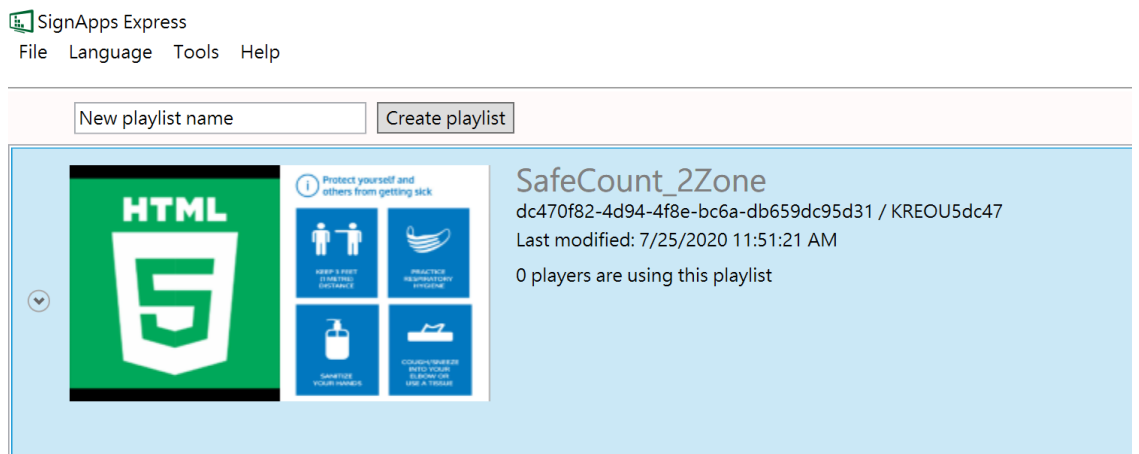


III. A file dialog will pop up, select the downloaded template file and click **Open**.

IV. A green tick  will be displayed if the file is import successfully. Click **Close** for the next step.

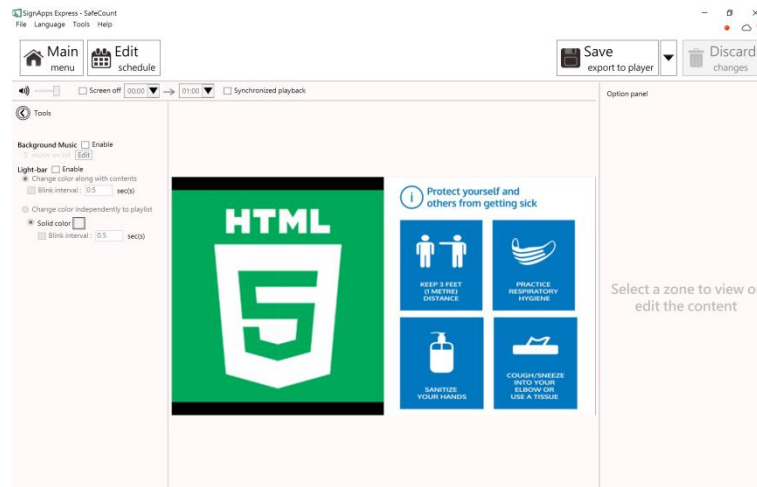


V. Here is the imported playlist, double click the playlist thumbnail on the left to start editing:

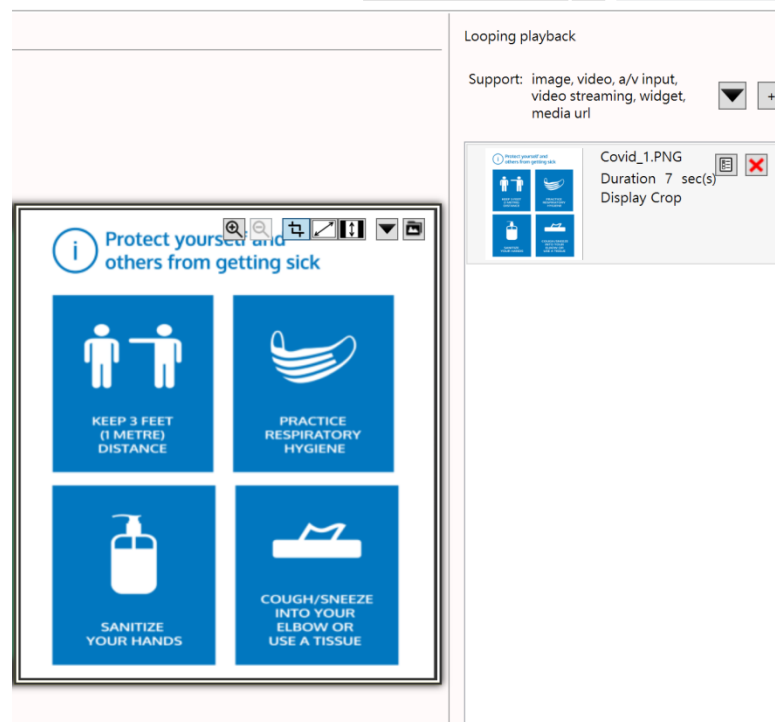


VI.

VII. On the editing screen, click the image of the awareness message to make changes.




VIII. The edit options will be displayed at the right:



- Click + to add another image.
- Click x to delete the image.
- If there is more than 1 image, those images will be played as a slideshow.

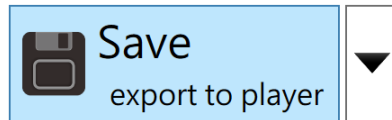
Note:

URLs added to the signage will be displayed as **HTML5**  during the editing. It will be displayed normally on the tablets once it is deployed.

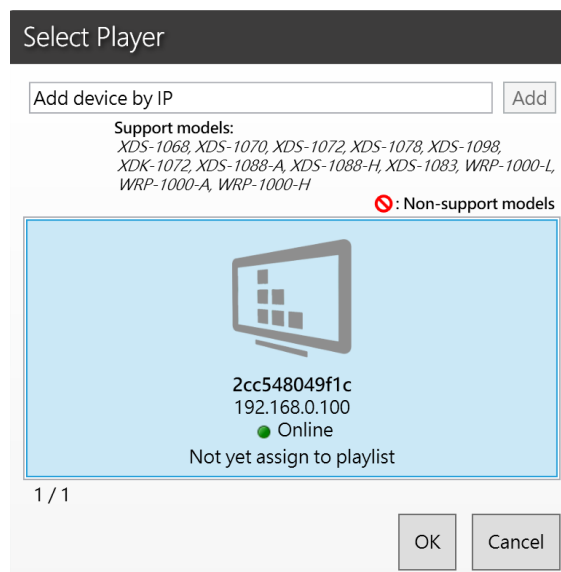
Besides using this template, users can also create a new playlist from scratch. For more information, check the user manual of SignApp Express on <https://support.iadea.com/hc/en-us/categories/115000904826-SignApps-Express>

4. After the editing is done, distribute the new content to devices.

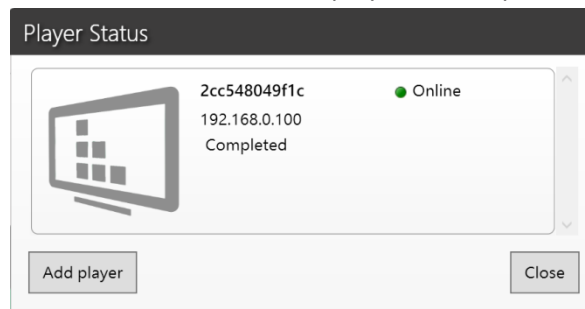
I. Press **Save export to player**.



II. The information of the panel will be shown, select your panel and press **OK**.



III. The new content is now displayed on the panel. Click **Close** to finish the process.





Contact IAdea

Product questions:

Sales@IAdea.com

Technical assistance:

Support@IAdea.com

Contact Irisys

Product questions:

Sales@irisys.com.uk