



Quick Start Guide

Date: 07/21/2022

Version 1.0.0

PDM-101 WBP Bracket



America

20 Fairbanks, Suite 170
Irvine, CA 92618
USA

Taiwan

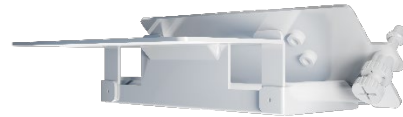
3F, No. 21 Lane 168, Xingshan Road
Neihu District, Taipei 114
Taiwan

This quick start guide illustrates how the WBP-130 device can be mounted to the top and underside of a desk with the aid of PDM-101 Workspace Booking Panel Bracket (WBPB). It includes mounting using with either screws or double-sided tape.

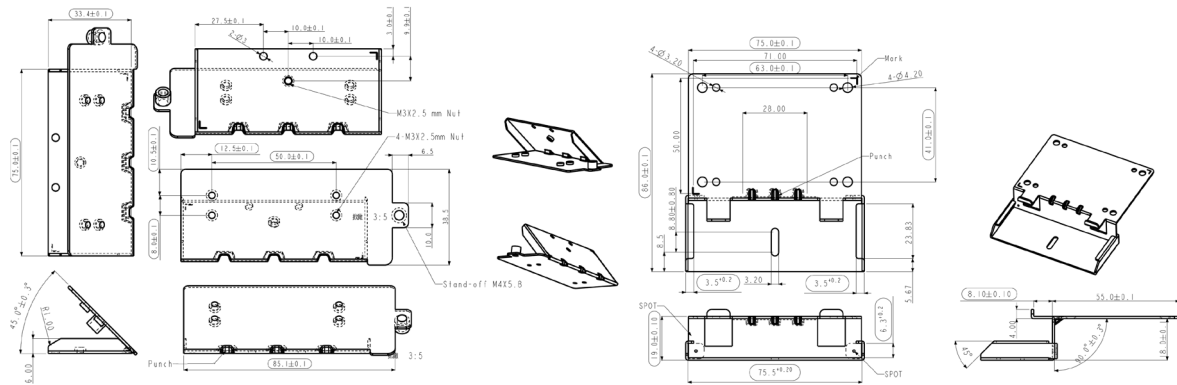
Tech Specifications

Part	Description
Workspace Booking Panel Bracket (WBPB)	
Dimensions	See below
Material	1.1mm SECC
Net Weight	TBD
Compatibility	WBP-130

Product Photo

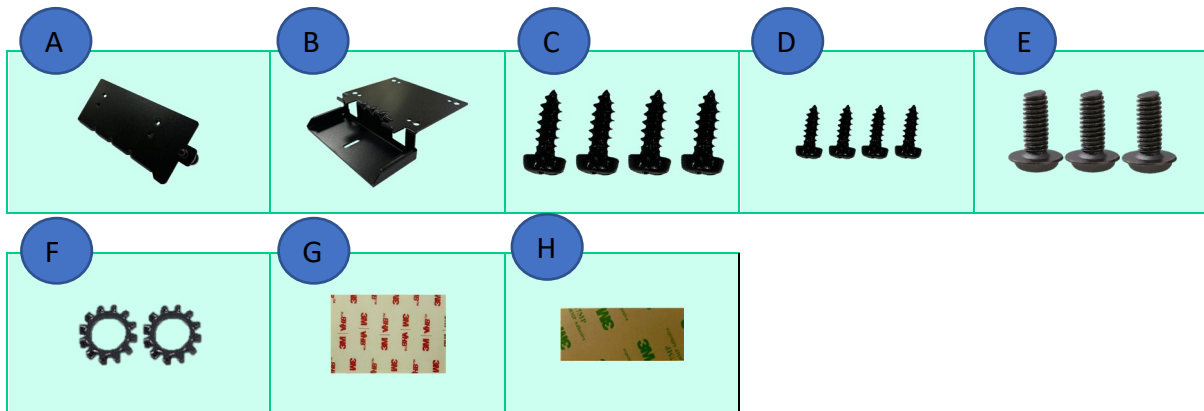


Dimensions



Box Contents

	Part	Qty	Description
A	Desk Top Mounting Bracket	1	Affix to underside desk bracket (part B) for side-of-desk mounting, or affix directly to top of desk.
B	Underside Desk Mounting Bracket	1	Affix to underside of desk
C	Screws (black M4 x 8 pan head)	4	For securing of bottom desk mount bracket
D	Screws (black M3 x 8 pan head)	4	For securing of bottom desk mount bracket
E	Screws (black P3 x 8 flat head)	3	For securing of - Device bracket to top desk mount bracket x2 - Top and bottom desk mount bracket x1
F	Washer (OD3 x OD8)	2	Securing of device bracket to bottom desk mount bracket
G	3M tape (50mm x 71mm)	1	For taping of bottom desk mount bracket to underside of desk
H	3M tape (30mm x 71mm)	1	For taping of top desk mount bracket to desk surface





Tool Preparation

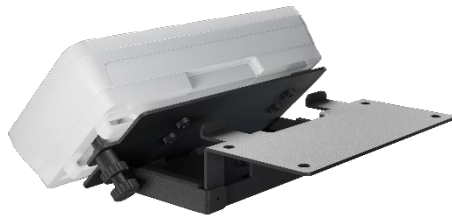
Tools and items required for installation:

- Isopropyl wipe
- Philips hand-held screw driver
- Battery-powered drill
- Phillips drill bit

Mounting and Installation

The PDM-101 Workspace Booking Panel Bracket (WBPB) can be mounted in two different locations: the underside or top side of a desk. Mounting can be achieved with either the screws or with the double-sided tape provided.

Underside Desk Mount








Desk Top Mount













Mounting Method 1 (Underside Desk Mount)



		
<p>Step 1: Remove 3M tape cover from underside desk bracket (part B)</p>	<p>Step 2: Position underside bracket (part B) and align two protruding handles to desk edge before adhering to underside of desk</p>	
		
<p>Step 3: Tighten four M4 screws to secure bracket to desk (four additional M3 screw are available depending on desk material)</p>	<p>Step 4: Remove plastic bracket from rear of WBP-130. Place washers on P3 screws</p>	
		
<p>Step 5: Place plastic bracket over top bracket and align screw holes. Insert P3 screws and tighten to secure brackets together</p>		<p>Step 6: Slide WBP-130 device sideways into plastic bracket</p>
		
<p>Step 7: Slide assembled desk top bracket (part A) sideways onto underside bracket (part B). Check desired depth and height are correct. Height of device can be altered by repeating step 5 and realigning to other screw opening</p>		<p>Step 8: Secure desk top bracket to underside bracket using a P3 screw</p>
		
<p>Step 9: Tighten screw on side of desk top bracket to lock device in place</p>	<p>Step 10: Installation complete</p>	

Mounting Method 2 (Desk Top Mount)



		
<p>Step 1: Remove plastic bracket from rear of WBP-130. Place washers on P3 screws</p>		
		
<p>Step 2: Place plastic bracket over desk top bracket and align screw holes. Insert P3 screws and tighten to secure brackets together</p>		<p>Step 3: Slide WBP-130 device sideways into plastic bracket</p>
		
<p>Step 4: Adhere 30mm x 71mm 3M tape to bottom of desk top bracket and remove 3M tape cover</p>		
		
<p>Step 5: Placed at selected position then press down to affix in place. Height of device can be altered by repeating step 5 and realigning to other screw opening. Tighten screw on side of top bracket to lock device in place</p>		<p>Step 6: Installation complete</p>