



User Manual

Date

5/2024

Version 3.2.1

# SignApps Express User Manual 3.2.3

114, 3F, No. 21  
Ln. 168, Xingshan Rd.  
Neihu Dist., Taipei, Taiwan

**Taiwan**

20 Fairbanks,  
Ste, 170 Irvine, CA 92618  
California, U.S.A

**America**

## Contents

|   |    |
|---|----|
| 1. Overview .....   | 5  |
| 2. Installation.....  | 6  |
| 2.1 Minimum system requirements.....                          | 6  |
| 3. Setup process.....   | 6  |
| 4. UI Overview.....   | 7  |
| 4.1 Main Menu .....   | 7  |
| 4.2 Player Model.....   | 8  |
| 4.3 Template List.....  | 8  |
| 4.4 Presentation Editor.....                                  | 9  |
| 4.5 Schedule Editor.....                                      | 11 |
| 4.6 Event Editor .....  | 12 |
| 4.7 User Operation Flow .....                                 | 13 |
| 4.8 Edit Playlist.....  | 14 |
| 4.8.1 Create playlist .....                                   | 14 |
| 4.8.2 Duplicate existing playlist.....                        | 16 |
| 4.9 Edit Presentation .....                                   | 17 |
| 4.9.1 Add looping playback media items by drag and drop ..... | 17 |
| 4.9.2 Add looping playback media items from panel .....       | 17 |
| 4.9.3 Media item configuration.....                           | 18 |
| 4.9.4 Edit image .....  | 19 |
| 4.9.5 Edit video.....   | 21 |
| 4.9.6 Edit PowerPoint file .....                              | 22 |
| 4.9.7 Edit Logo.....  | 23 |
| 4.9.8 Edit Widget.....  | 24 |
| 4.9.9 Adding Ticker.....                                      | 25 |
| 4.9.10 Edit text .....  | 29 |
| 4.9.11 Switch theme and Toggle logo display.....              | 31 |
| 4.9.12 Adding background music.....                           | 31 |

|        |  |    |
|--------|--|----|
| 4.9.13 | Switch between presentations.....                        | 32 |
| 4.9.14 | Interact with LED light bar .....                        | 32 |
| 4.9.15 | Video Streaming on 4K Media Player .....                 | 35 |
| 4.9.16 | Edit Media URL.....                                      | 37 |
| 4.9.17 | Synchronize Playback.....                                | 38 |
| 4.10   | Edit Schedule .....                                      | 38 |
| 4.10.1 | Add an event schedule .....                              | 39 |
| 4.10.2 | Edit recurrence type .....                               | 41 |
| 4.10.3 | Schedule priority .....                                  | 43 |
| 4.10.4 | Add presentations to an event .....                      | 44 |
| 4.10.5 | Duplicate a presentation to an event.....                | 46 |
| 4.10.6 | Duplicate an event.....                                  | 46 |
| 4.10.7 | Adding trigger event .....                               | 48 |
| 4.10.8 | Send power on and standby RS-232 command to display..... | 49 |
| 4.11   | Export Playlist .....                                    | 50 |
| 4.11.1 | Export playlist via USB .....                            | 50 |
| 4.11.2 | Export playlist via Network.....                         | 51 |
| 4.11.3 | Export playlist via Cloud .....                          | 53 |
| 4.11.4 | Player association.....                                  | 56 |
| 4.12   | Save / Load Playlist.....                                | 57 |
| 4.12.1 | Save playlist(s) .....                                   | 57 |
| 4.12.2 | Load playlist(s).....                                    | 59 |
| 4.12.3 | Save/Load Cloud Playlist.....                            | 59 |
| 4.13   | SignApps Cloud Update Function.....                      | 60 |
| 4.13.1 | Initial Setup.....                                       | 60 |
| 4.13.2 | Cloud Server Dashboard .....                             | 62 |
| 4.13.3 | Adding Cloud Update License .....                        | 63 |
| 4.13.4 | SignApps Cloud Limitations .....                         | 65 |
| 4.14   | Configure Player .....                                   | 66 |
| 4.14.1 | Features.....  | 66 |
| 4.14.2 | Device Configuration.....                                | 67 |
| 4.14.3 | Device Troubleshooting .....                             | 68 |

|                               |    |
|-------------------------------|----|
| 4.15 Firmware Update.....     | 69 |
| 4.16 Widget Update.....       | 70 |
| 4.16.1 Update the widget..... | 70 |
| 4.16.2 Use the widget .....   | 73 |
| 4.17 Layout Editor.....       | 74 |

# 1. Overview

Boosting up your sales with digital signage is no longer a complicated task. SignApps Express is the world's easiest digital signage software that can help you put the right messages to the right place immediately. The software features professional pre-designed templates, auto discovery of digital signage devices, and an intuitive WYSIWYG (what you see is what you get) user interface that anyone can learn and use in no time. Simply choose a template, upload your media content, and click to export to your players on the network.

**Digital signage made easy with SignApps Express.**



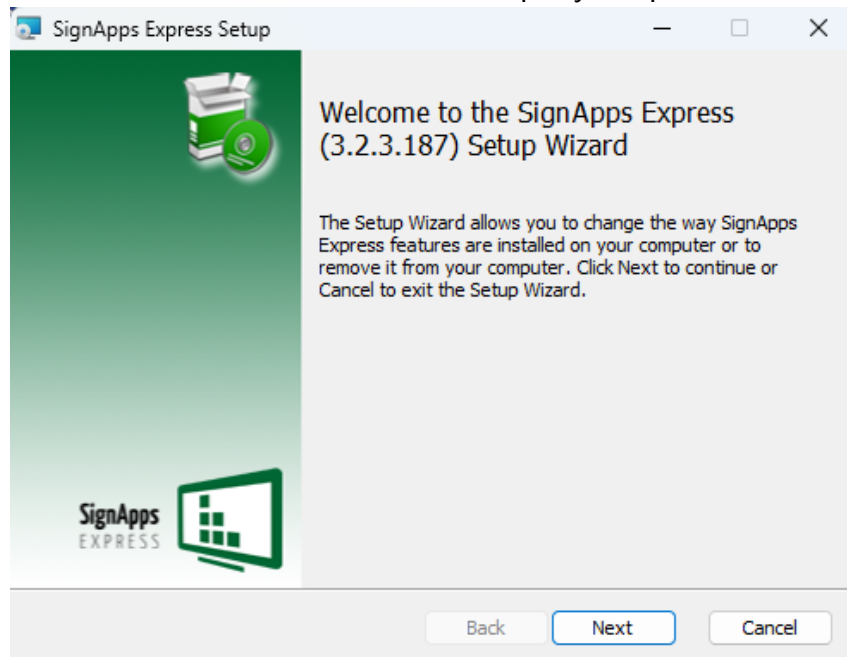
## 2. Installation

### 2.1 Minimum system requirements

|  |  |
|--|--|
| Windows Vista, 7, 8 or 10 Operating System         | 2.6 GHz CPU                              |
| .NET Framework 4                                   | 2GB of system memory ( 4GB recommended ) |
| (optional)Microsoft PowerPoint 2003/2007/2010/2013 | 200 MB available storage space           |

## 3. Setup process

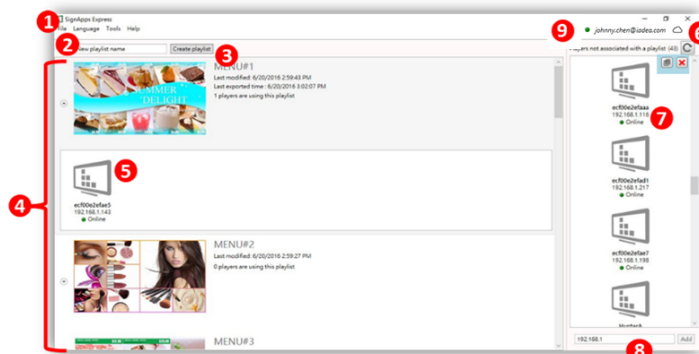
Run the installer and follow the step-by-step instructions.



## 4. UI Overview

### 4.1 Main Menu

The main menu is composed of a list of existing playlists and a list of players available for playlist assignment.



- 1 Tool bar
  - File
  - Language option
  - Help information
- 2 Playlist name field and
- 3 Playlist create button
- 4 List of existing Playlists  
Playlist preview and info
- 5 The associated players of the playlist
- 6 Refresh button
- 7 Player name, IP, status
- 8 Adding player manually by its IP
- 9 SignApps Cloud Login and Status

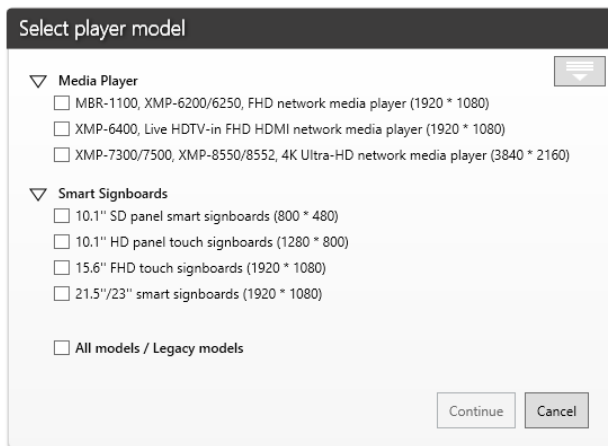
You can drag players into and out of a playlist to make it associated/unassociated with the playlist. Double click a playlist to edit.

When mouse cursor is over a playlist, an "X" button will show up. Click the "X" to delete playlist.

Maximum 50 players can be associated with a playlist.

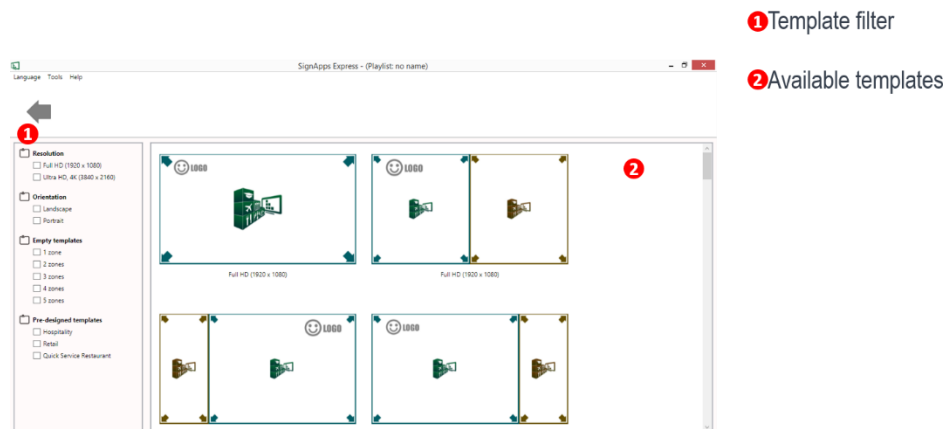
## 4.2 Player Model

Select a player model for model specific playlist or Select All models for general playlist supported by all devices.



## 4.3 Template List

Template list contains all the presentation templates.



1 Template filter

2 Available templates

## 4.4 Presentation Editor

Presentation editor allows you to edit all the media content: text, image, video and widget in a presentation.

It also allows you to save and export the playlist to the players or USB.

Click Edit Schedule if you need to create a playback schedule.

**1** Back to Main menu

**2** Edit Playlist Schedule

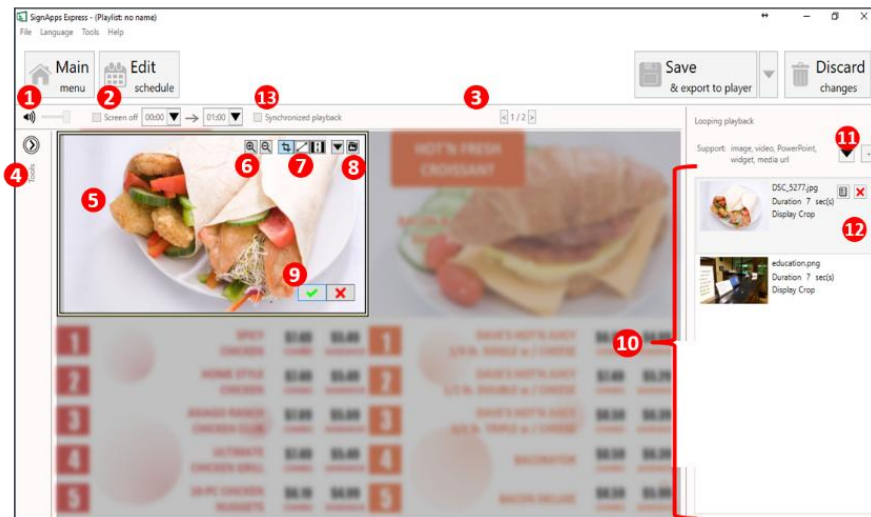
**3** Save and export

**4** Select export target (player or USB)

**5** Discard all changes

**6** Editing zone

| Item                                     | Price  | Price  | Item  | Price  | Price  |
|--|--------|--------|---|--------|--------|
| SPICY CHICKEN COMBO SANDWICH             | \$7.49 | \$5.49 | DAVE'S HOT'N JUICY 1/4 lb. SINGLE w / CHEESE COMBO SANDWICH | \$6.99 | \$4.89 |
| HOME STYLE CHICKEN COMBO SANDWICH        | \$7.49 | \$5.49 | DAVE'S HOT'N JUICY 1/2 lb. DOUBLE w / CHEESE COMBO SANDWICH | \$7.49 | \$5.29 |
| ASIAGO RANCH CHICKEN CLUB COMBO SANDWICH | \$7.99 | \$5.69 | DAVE'S HOT'N JUICY 3/4 lb. TRIPLE w / CHEESE COMBO SANDWICH | \$8.59 | \$6.39 |
| ULTIMATE CHICKEN GRILL COMBO SANDWICH    | \$7.49 | \$5.49 | BACORATOR COMBO SANDWICH                                    | \$8.59 | \$6.39 |
| 10-PC CHICKEN NUGGETS COMBO SANDWICH     | \$6.19 | \$4.99 | BACON DELUXE COMBO SANDWICH                                 | \$8.59 | \$5.99 |



- 1 Volume control
- 2 Screen off control
- 3 Switch presentations
- 4 Expand/Hide tool menu
- 5 Editing zone
- 6 Zoom options
- 7 Fit options
- 8 Change content
- 9 Confirm/Cancel change
- 10 Media list for this zone
- 11 Add more media files
- 12 Media information
  - Thumbnail
  - File name
  - Options
- 13 Synchronized playback

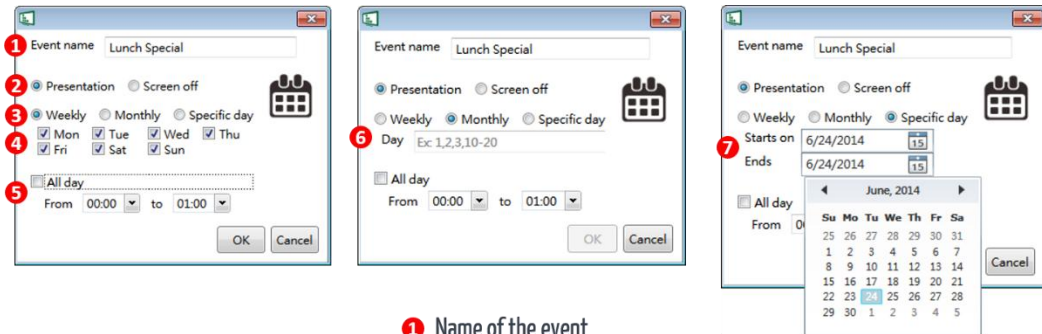
## 4.5 Schedule Editor

Schedule editor helps you create flexible playlist containing multiple presentations which will play automatically according to pre-defined events (time slots). Users can add up to 50 event schedules and up to 50 presentations in a presentation loop.

The screenshot shows the SignApps Express Schedule Editor interface. On the left is a sidebar with a 'Main menu' button and a list of event schedules: 'Default presentation' (Every Mon-Sun, All day), 'Lunch Special' (Every Mon-Sun, All day), and 'Close' (Every Mon-Sun, 13:00 - 15:00). The main area displays a 'Presentation duration: 300 sec(s)' and contains two presentation thumbnails. The top thumbnail shows a menu with items like 'Lunch Special' and 'Summer Delight'. The bottom thumbnail shows a 'SUMMER DELIGHT' menu. A legend on the right lists the numbered callouts: 1. Add event schedule; 2. Existing events; 3. Event information (Time slot, Event Day/Date, Event Type); 4. Add new presentation to current event; 5. Enable event trigger for devices; 6. Existing presentations in current event; 7. Presentation thumbnail and duration.

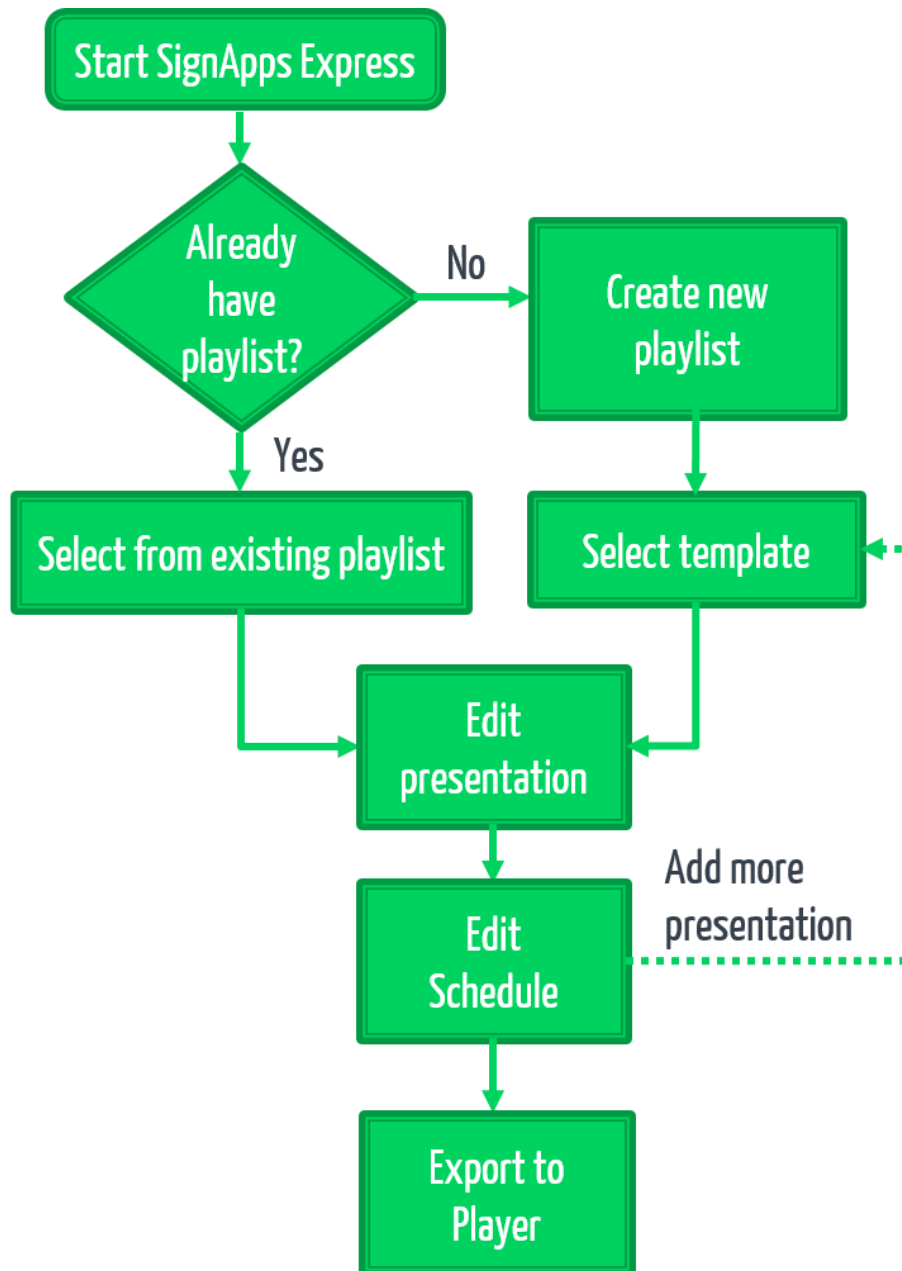
## 4.6 Event Editor

Event Editor lets you define how and when each event will take place.



- 1 Name of the event
- 2 Event type (available when add new event)
- 3 Recurrence type
- 4 Day picker for weekly event
- 5 Time slot
- 6 Day picker for monthly event
- 7 Day picker for specific day event

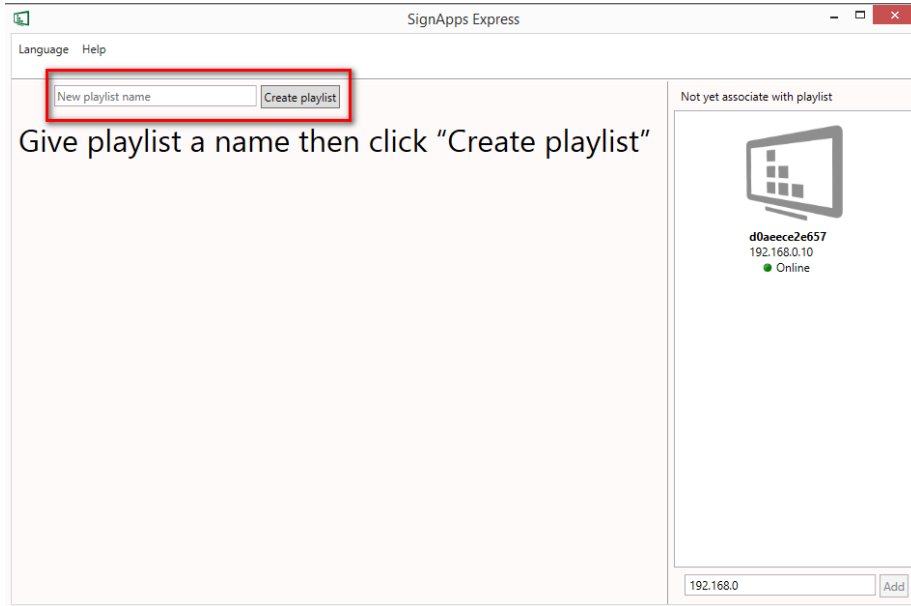
### 4.7 User Operation Flow



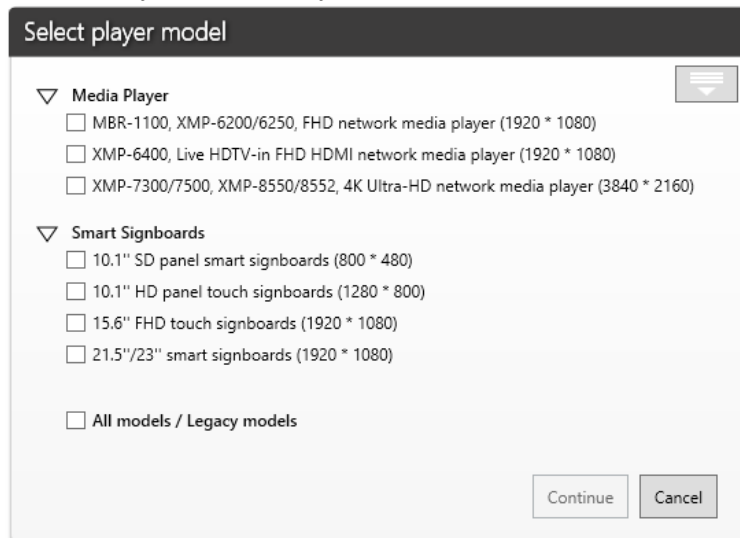
## 4.8 Edit Playlist

### 4.8.1 Create playlist

1. Input a playlist name (optional) and then click Create playlist.



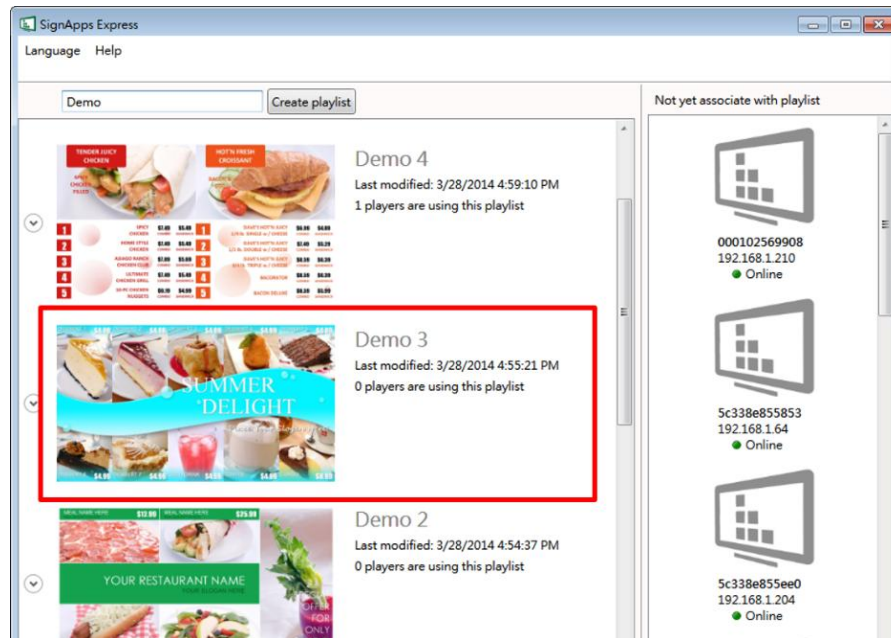
2. Select Player Model Type



3. Double click a template to make your selection.

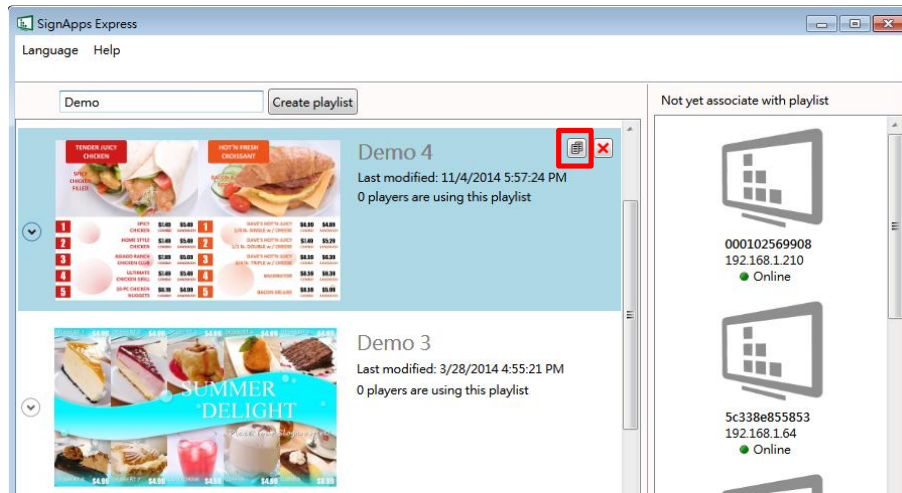


To edit from an existing playlist  
Double-click on an existing playlist to edit.



### 4.8.2 Duplicate existing playlist

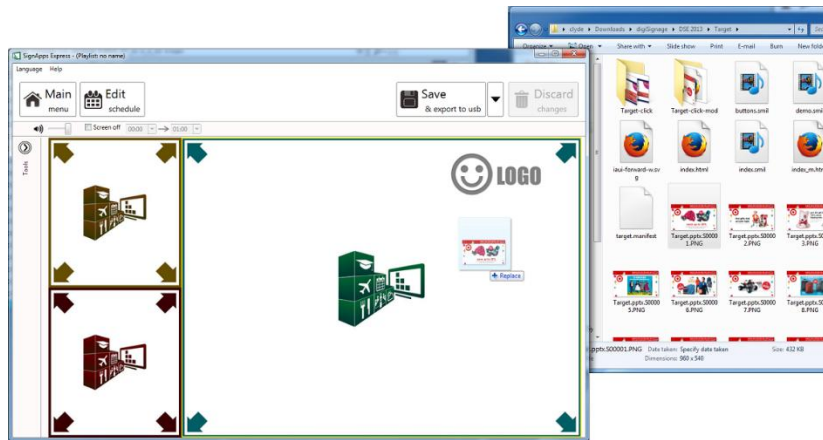
Click the Duplicate button on an existing playlist to copy it.



## 4.9 Edit Presentation

### 4.9.1 Add looping playback media items by drag and drop

Simply drag and drop media from file explorer to the zone.





### 4.9.2 Add looping playback media items from panel


1. Select a zone and the Looping playback option panel will expand.




2. Add new image/video/powerpoint/widget and edit their options.

Click  to add more media to the zone.

Click  to add special media to the zone:

Widget 

A/V input 

#### ***4.9.3 Media item configuration***

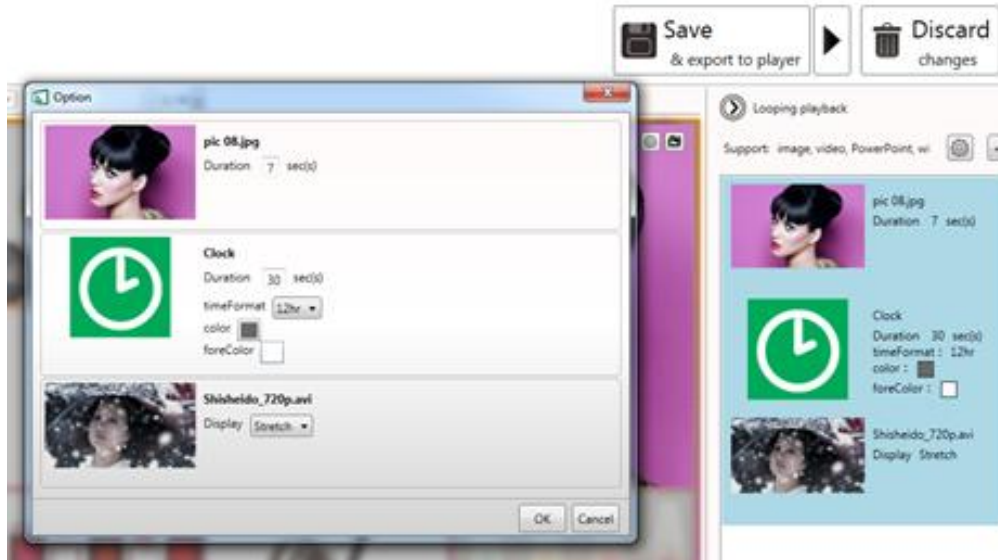
1. Focus/Zoom (image only) and Fit option can be configured from editing zone directly.



2. Playback duration and other options can be configured from Option dialog, to launch the Option dialog:

- Double click on media item
- Click right mouse button and select Option..

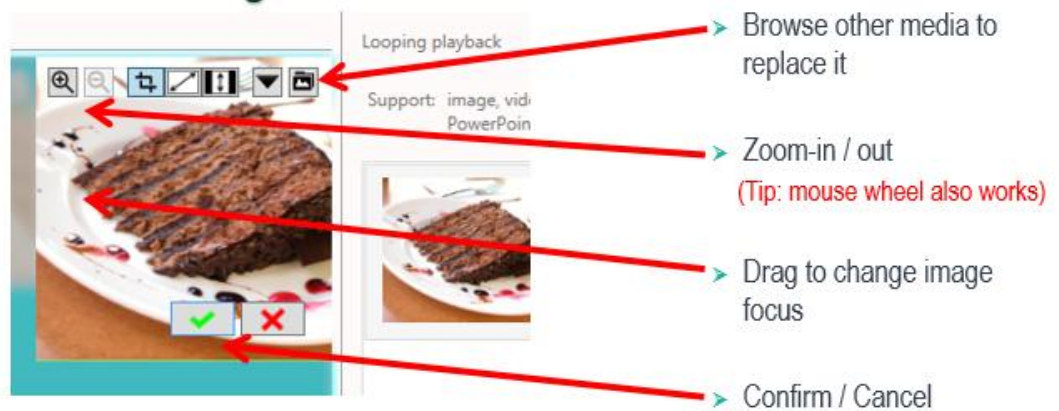
*Note:*  
To select multiple items, click the first item, press and hold down the Ctrl key, and then click the next item



#### 4.9.4 Edit image

1. Add image file to a zone and click on the item in the looping playback media list to start editing .

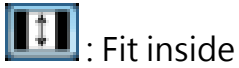
2. You can replace the image, zoom-in/out and adjust the focus. Click confirm when you are done



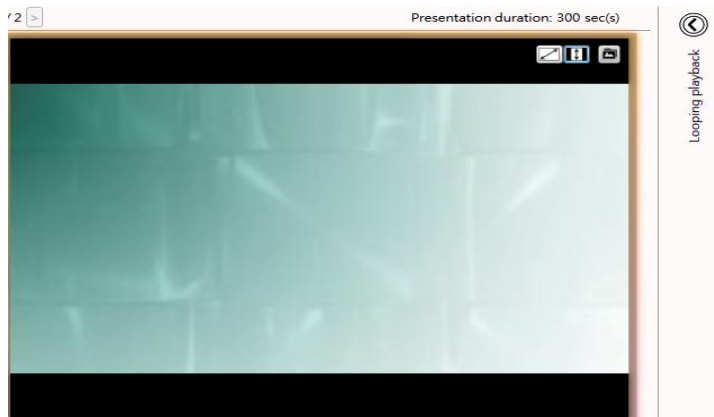
| Configurable options | Options  |
|----------------------|--|
| Duation              | Playback duration (seconds)  |
| Display option       | Crop (default option which allows user to change focus freely)<br>Fit (fit image inside the zone and maintain its aspect ratio)<br>Stretch (fill image inside the zone without maintaining its aspect ratio) |

### 4.9.5 Edit video

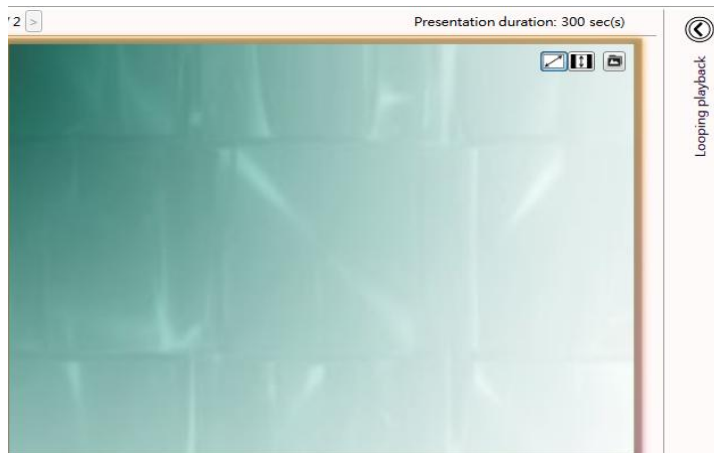
1. Add video files to a zone and click on the item to start editing.
2. Configure display option :



*Note:*  
Double click the video  
to preview the  
playback in Windows  
application



*Note:*  
Only ONE zone is  
allowed to contain  
video files in a  
presentation



| Configurable options | Options     |
|----------------------|-------------|
| Display              | Fit/Stretch |

#### 4.9.6 Edit PowerPoint file

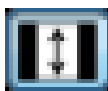
*Note:*

*Export PowerPoint slides (static images only) if you have PowerPoint 2016 or later installed in same computer*

1. Add powerpoint file to a zone and click on the item to start editing.



2. Choose to fit inside the zone or stretch PowerPoint to the zone:



: Fit inside



: Stretch

*\* When there is no specific playback duration for each slide in PowerPoint settings.*

*Note:  
LOGO zone does not support looping playback*

| Configurable options          | Options                                   |
|-------------------------------|---|
| Display                       | Fit/Stretch                               |
| Unspecified slide duration(*) | Playback duration for each slide(seconds) |

### 4.9.7 Edit Logo

Click on LOGO icon to edit LOGO.  
(LOGO only supported in select Templates)



3. You can replace the image, zoom-in/out and adjust the focus. Click confirm when you are done.

### 4.9.8 Edit Widget

Add widget files to a zone and click on the item to start editing.

*Note*

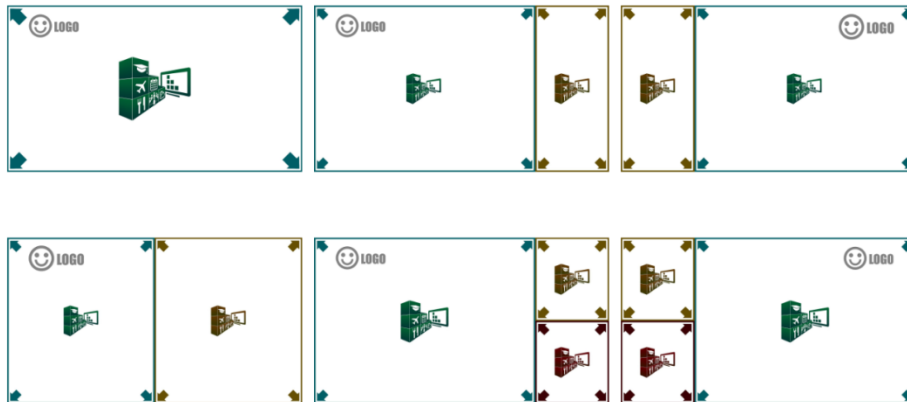
Every API key has the limited times to query information from the website. Users can sign up to get the location search weather API by using the link below.  
<https://developer.worldweatheronline.com/author/register> *Note:*  
 Verify this link is current before publishing — WorldWeatherOnline has updated their registration portal since this manual was written.

| Configurable options | Options  |
|----------------------|--|
| Common Options       | Playback duration : seconds<br>Color: background color<br>foreColor: text color  |
| Clock                | timeFormat : 12h/24h   |
| Calendar             | timeFormat : 12h/24h<br>Align: right/center/left   |
| Weather              | Cities: choose from pull-down list or type the city name listed in this web page - <a href="http://www.worldweatheronline.com/country.aspx">http://www.worldweatheronline.com/country.aspx</a> (verify link — may be outdated)<br>Scale : C/F<br>Key : worldweather online API Key(Pease see note) |
| RSS                  | Urls: RSS URL<br>Writing direction:Right to Left/Left to Right<br>Color: test color<br>Title-Length: Non-integer<br>Content-Lenth: Non-integer   |
| Webpage              | URL: website URL   |
| Advanced Clock*      | clockSkin: *.jpg, *.png, *.jpeg<br>showDate: True, False<br>dateFormat: Format of date   |

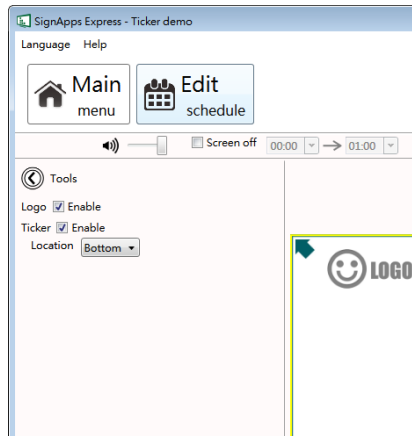
|   |  |
|---|--|
| <p><i>* Unsupported models:<br/>XMP-2200/2300/2400, XMP-3250/3350/3450 and XDS-1060/1062/1068</i></p> | <p>dateColor: Date text color<br/> showSweepHand: True, False<br/> secondHand Color: Second hand color<br/> backgroundColor: The background color of whole region<br/> handColor: Color of minute hand and hour hand</p> |
|---|--|

### 4.9.9 Adding Ticker

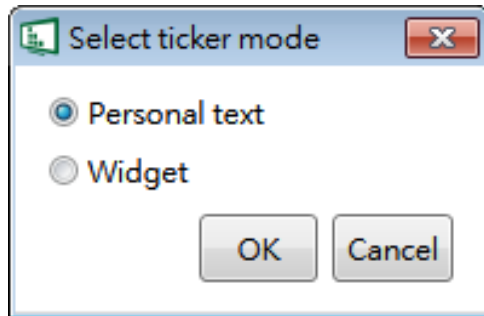
1. Choose one of the empty templates to use ticker.



2. In the Tools panel, check Ticker to enable it.



3. Select a preferred ticker mode from one of the options:



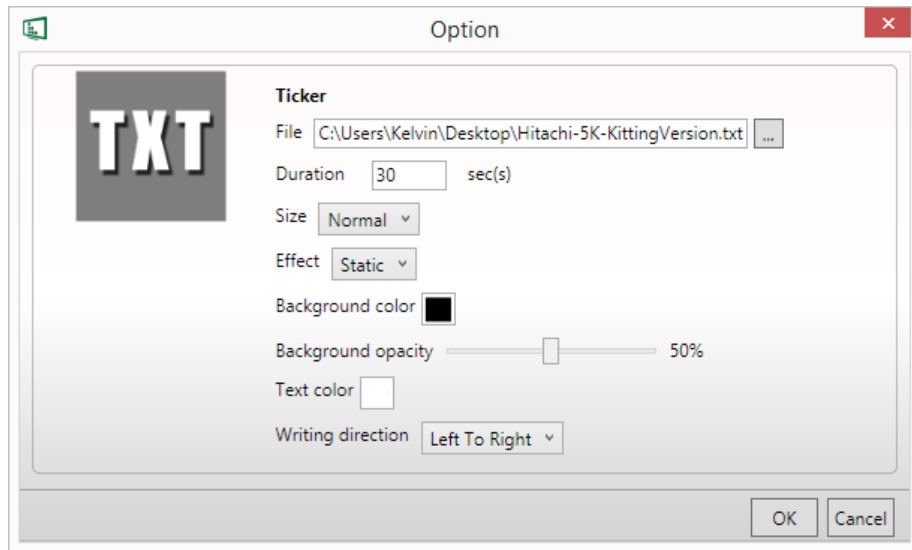
Personal text:

To display text content from a .txt file.

Widget:

To display a widget in the ticker zone.  
(ex. RSS widget or custom widgets)

Configure personal text –

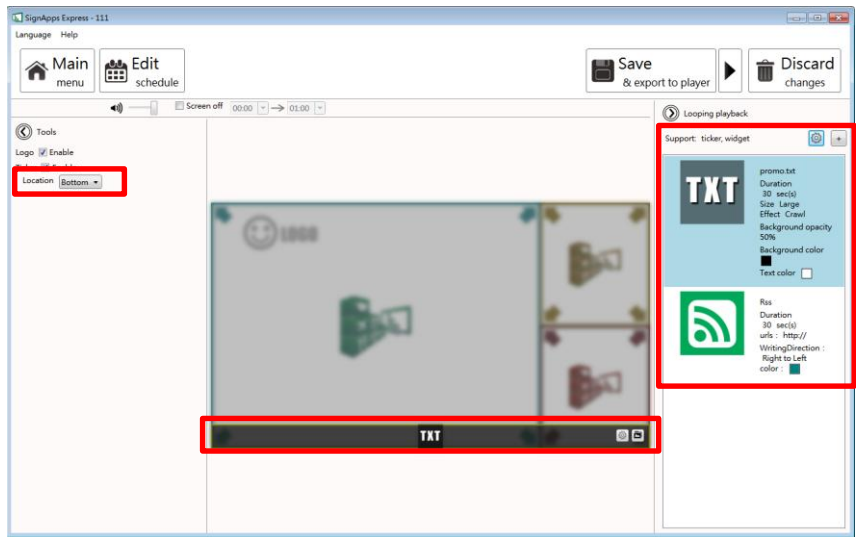


| Configurable options | Options   |
|----------------------|---|
| File                 | Path to the .txt file   |
| Duration             | Playback duration in seconds  |
| Size                 | The text size of the ticker<br>Available options: small/normal/large  |
| Effect               | Transition effect of the ticker<br>Available options:<br>Static: no transition effect between lines<br>Crawl: ticker crawls from right to left<br>Scroll: ticker scrolls up |
| Background color     | Select ticker zone background color from color palette  |

|                    |  |
|--------------------|--|
| Background opacity | Level of transparency of the ticker background |
| Text color         | Select text color from color palette           |
| Writing direction  | Left to right/Right to left                    |

After enabling the ticker, you can:

1. Change the location of the ticker to Bottom or Top.
2. Add additional .txt files or widgets to the zone.

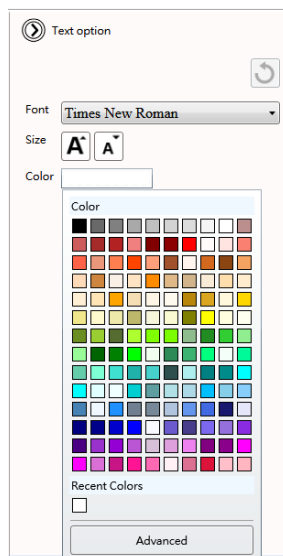


### 4.9.10 Edit text

1. Editable text is highlighted with a yellow box when you hover over it. Click the text to start editing.



2. Expand option to change font type, size and color.

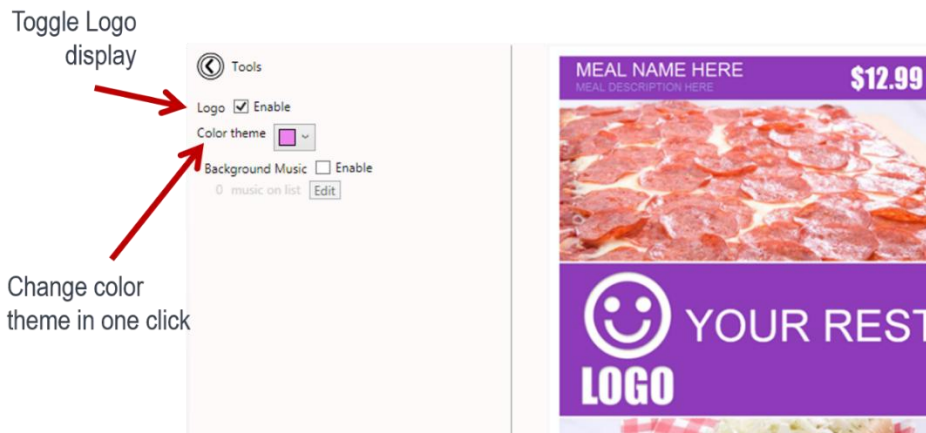


3. If the text belongs to a text group, changing its style would affect on all text in the same group.



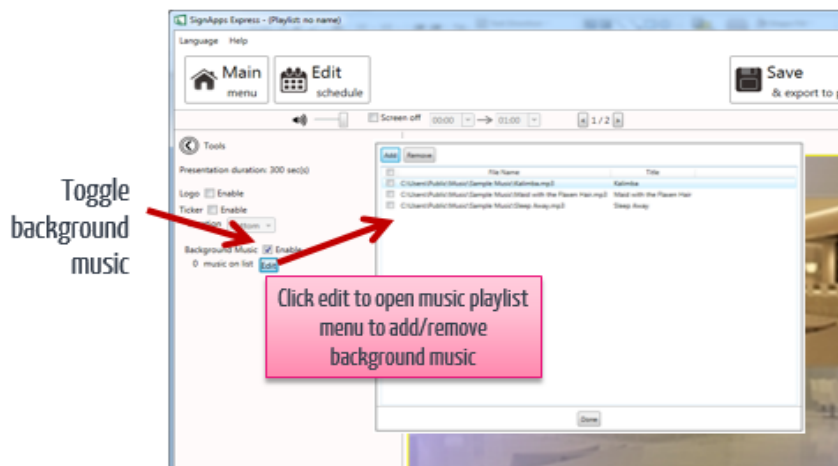
### 4.9.11 Switch theme and Toggle logo display

Expand Tools panel to toggle logo display and choose a different color theme.



### 4.9.12 Adding background music

Background music only works with image/PowerPoint presentation. If presentation contains video, an information message will show up to ask user to remove video from presentation before adding background music.



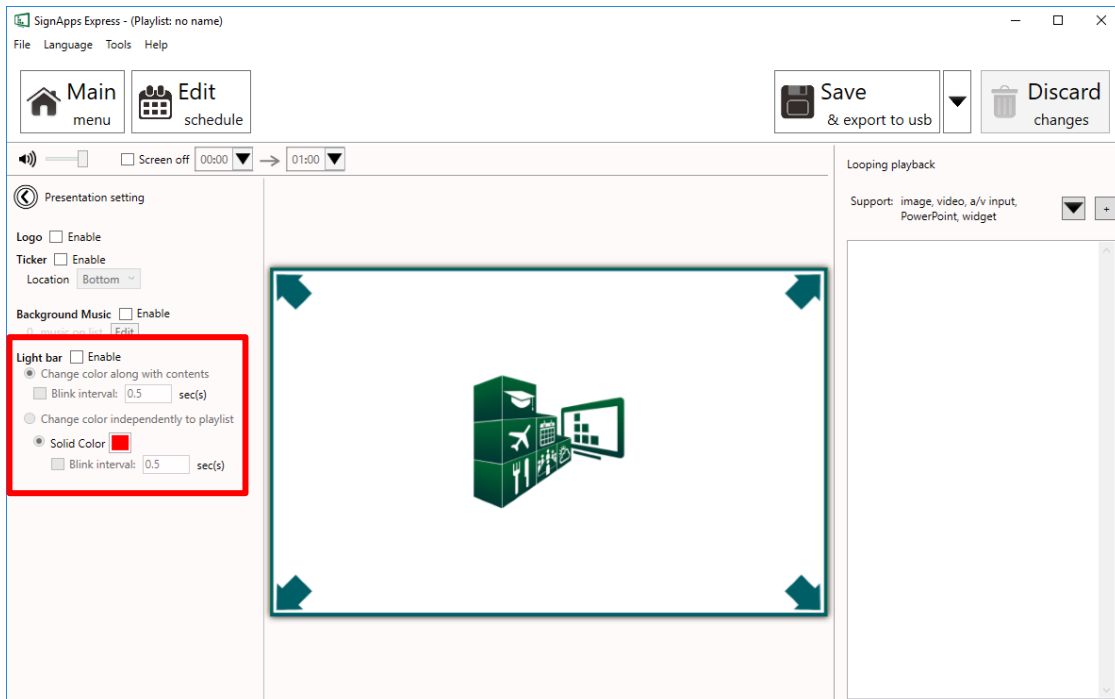
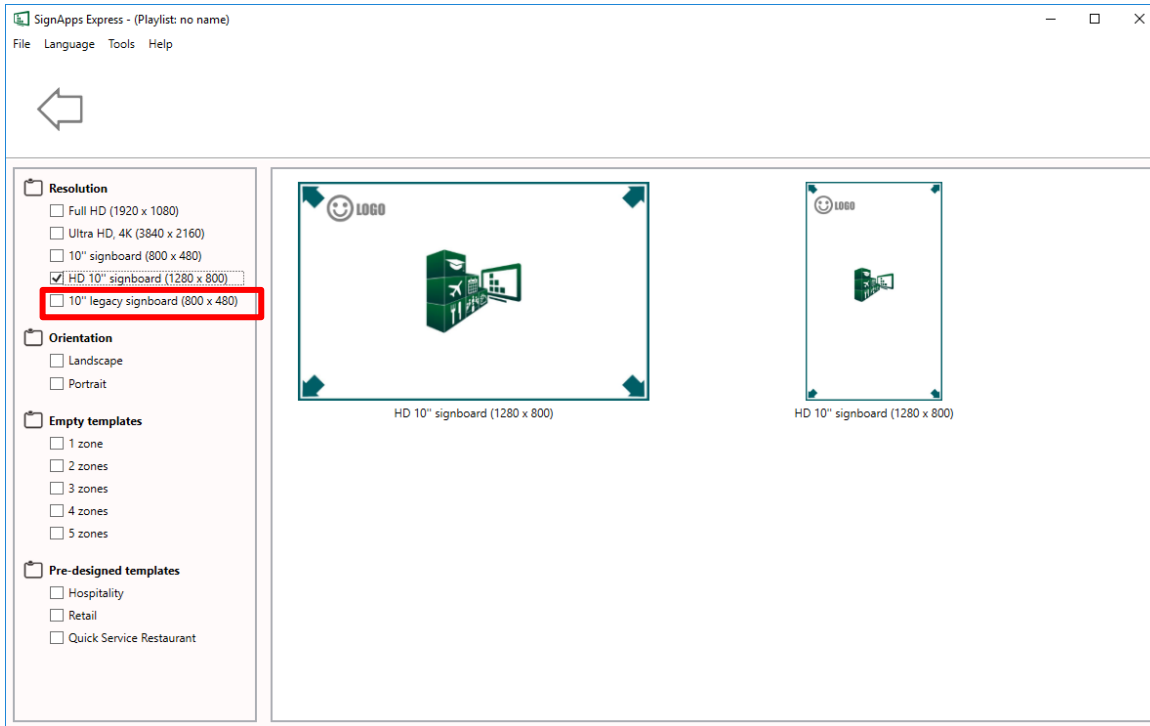
### 4.9.13 Switch between presentations

If more than one presentation exists in same event schedule, switching between presentations can be done by the switch as shown below.

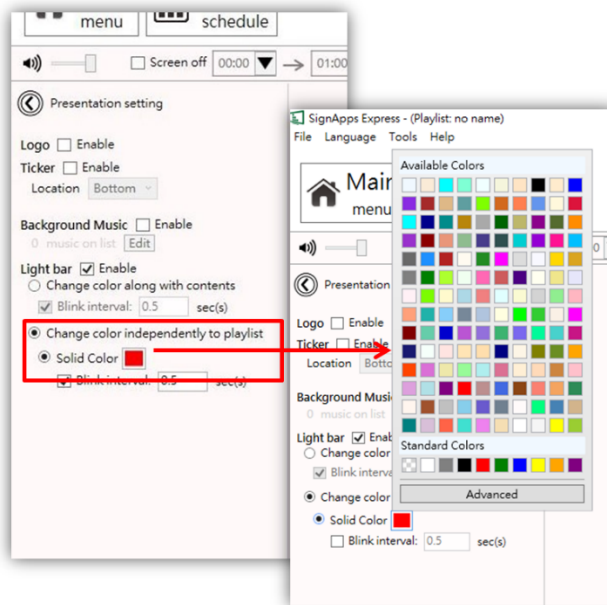


### 4.9.14 Interact with LED light bar

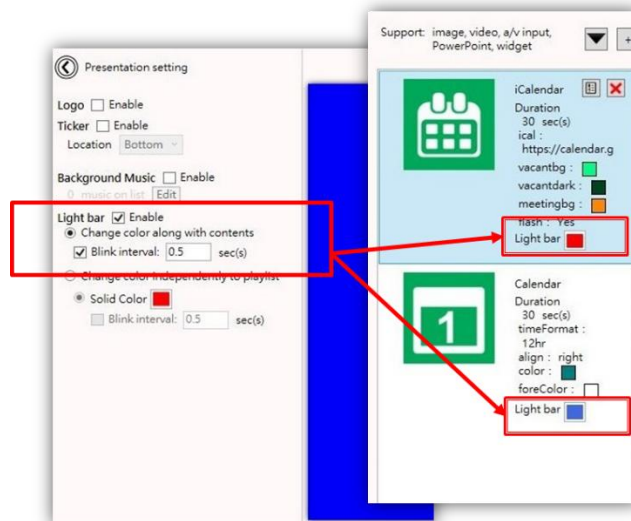
When selecting HD 10" signboard (1280 x 800) layouts, LED light bar control is available for certain models of signboards.



Enable the light bar to blinking constently:

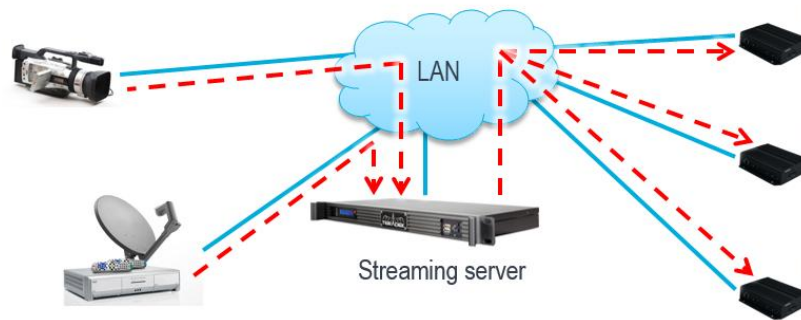


Or interact it with contents:

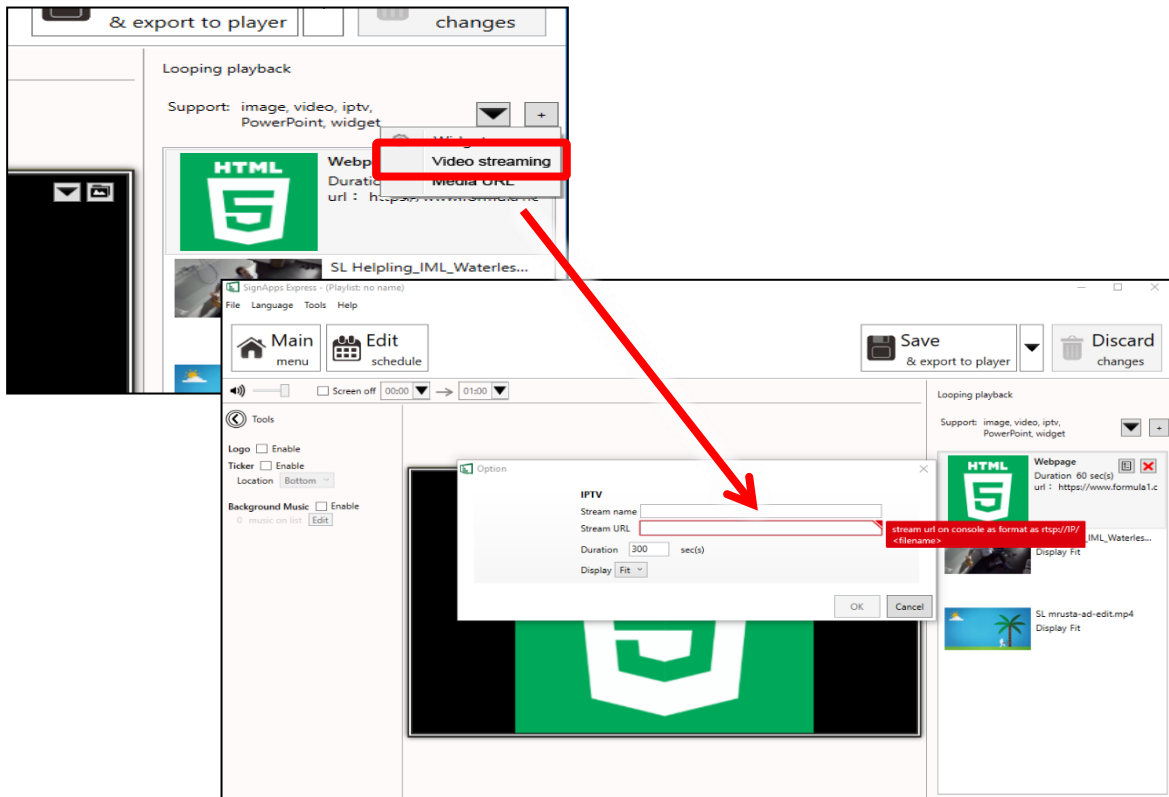


#### 4.9.15 Video Streaming on 4K Media Player

- Spec: RTSP H.264 video streaming
- Application: Stadiums, Flight Information Display, Entertainment TV
- Supported model: XMP-7300



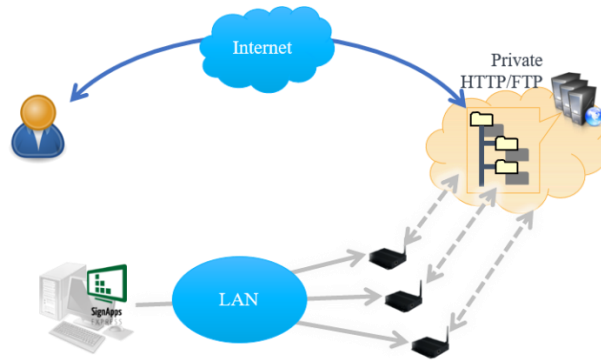
Capable of streaming RTSP video stream from local server.



### 4.9.16 Edit Media URL

Benefit

- Update content remotely by replacing the media file on HTTP/FTP.
- Does not require all files to be stored on local PC.



Spec:

- Accept video and image URL from HTTP or FTP server.
- Accept URL with or without basic authentication.

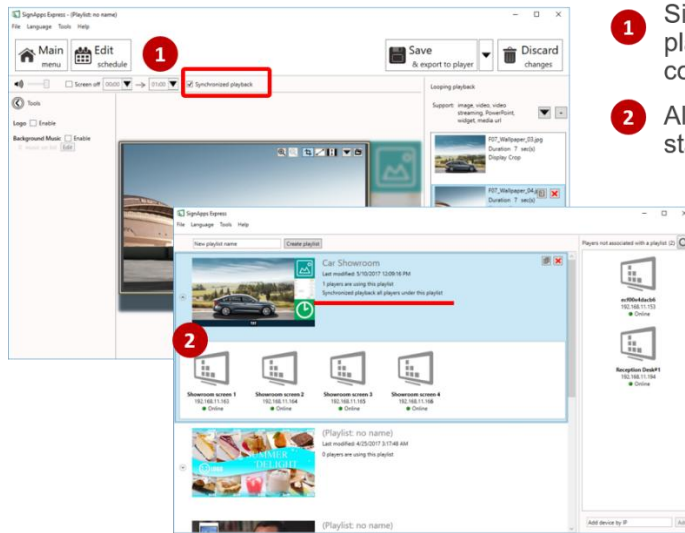
The screenshot shows the SignApps interface with a 'Media URL' dialog box open. The dialog box has a title bar 'Media URL' and a close button 'X'. It contains a 'Support' dropdown menu set to 'Image, Video', a 'URL' text field, an 'Option' dropdown menu, and 'User ID' and 'Password' text fields. There are 'OK' and 'Cancel' buttons at the bottom. A red box highlights the 'Media URL' option in the main interface, and a red arrow points from the dialog box to a text box containing the following URLs:

<http://my.space.com/sample-video.avi>  
<ftp://my.ftp.com/sample.image.png>

Numbered instructions are provided:

- 1 Click Media URL. Accept video and image URL from HTTP or FTP server.
- 2 Accept URL with or without basic authentication.

### 4.9.17 Synchronize Playback



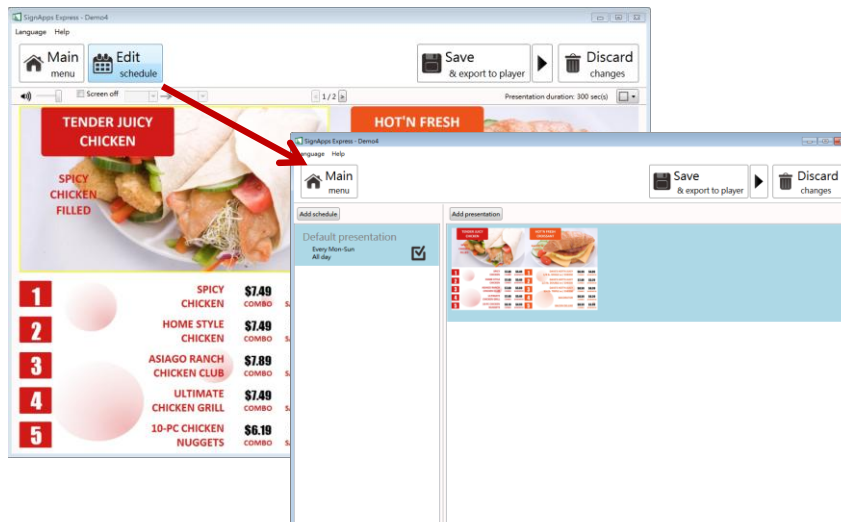
- 1 Simply checked the synchronized playback option during editing the content
- 2 All devices under the same playlist will start playback content within +/- 1 sec



Example scenario

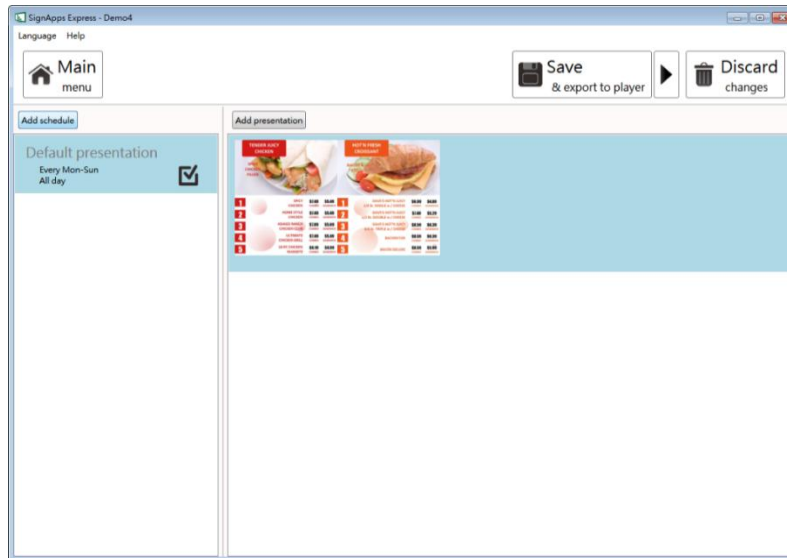
### 4.10 Edit Schedule

Click Edit schedule to enter schedule editor.

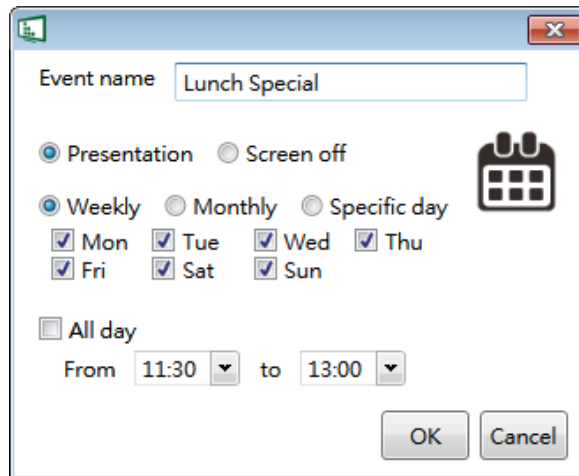


### 4.10.1 Add an event schedule

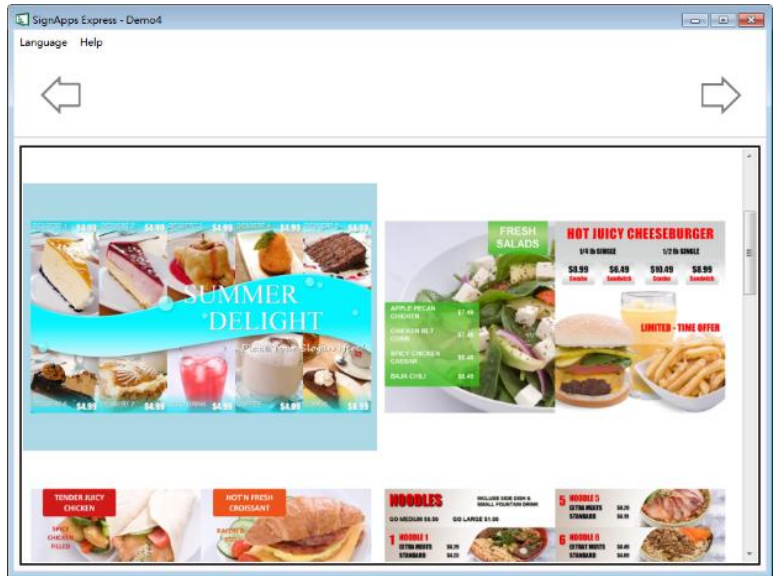
1. Click Add event schedule.



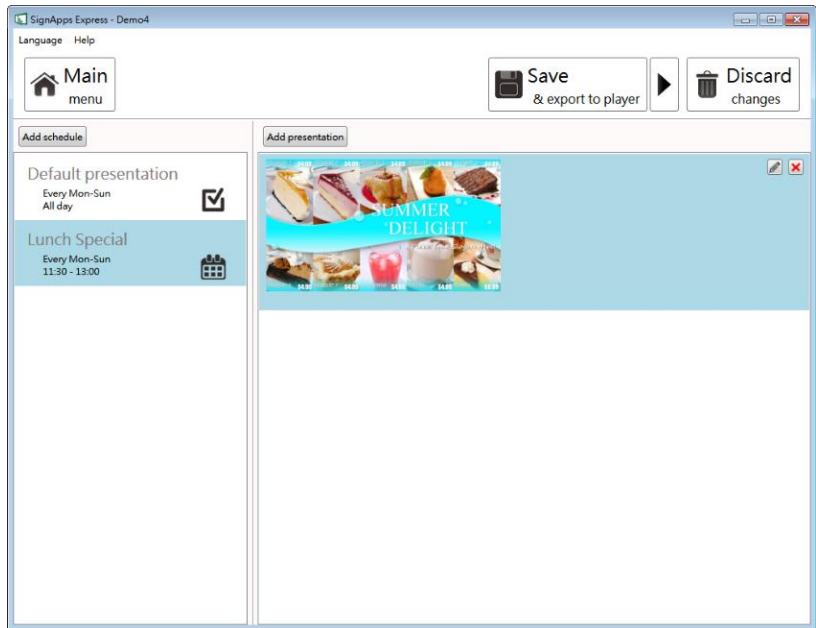
2. Edit the event schedule.



3. Select template.

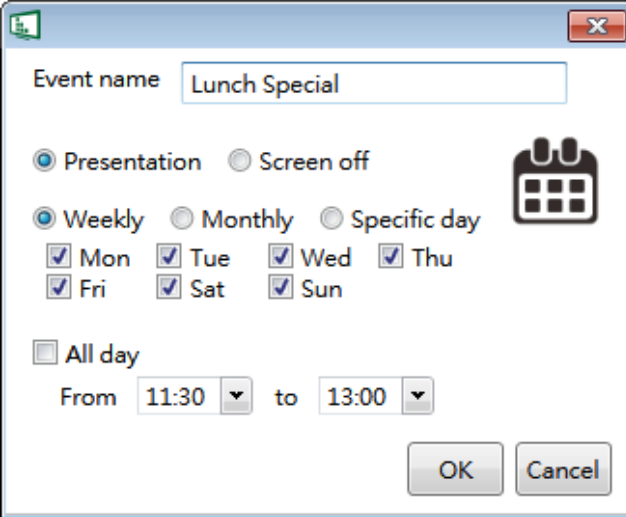


4. Edit the newly added presentation.



### 4.10.2 Edit recurrence type

Edit the event schedule by specify the event name, event type, recurrence type and playback period.



Event name: Lunch Special

Presentation  Screen off

Weekly  Monthly  Specific day

Mon  Tue  Wed  Thu  
 Fri  Sat  Sun

All day

From 11:30 to 13:00

OK Cancel

Specific days(s) event has the highest priority.

Monthly recurrence has the 2nd highest priority.

Weekly recurrence has the lowest priority when schedules are overlapping.

Weekly: Select the days of week you would like to create schedule for.

Weekly  Monthly  Specific day  
 Mon  Tue  Wed  Thu  
 Fri  Sat  Sun

Monthly: Enter days separated by a comma. For consecutive dates, use dash to separate start and end dates.

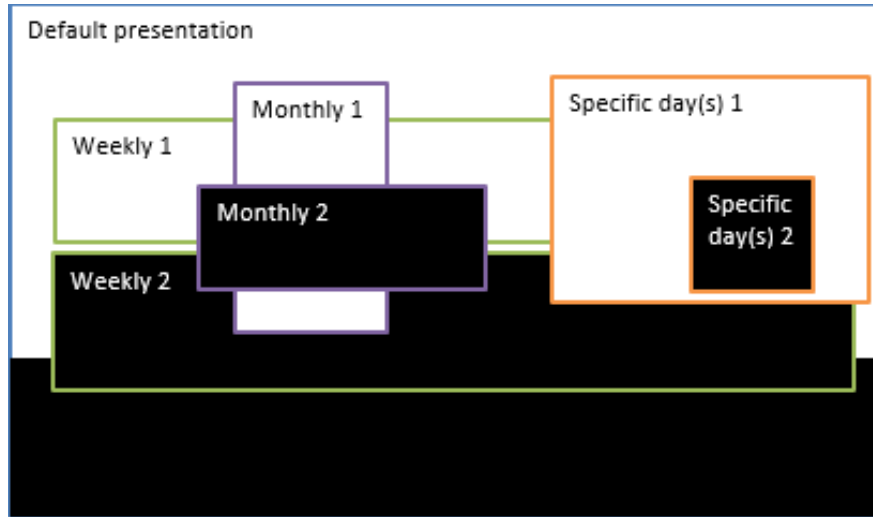
Ex: 1,5,9,15-18 will play on 1st ,5th ,9th ,15th ,16th ,17th , and 18th of each month.

Weekly  Monthly  Specific day  
Day

Specific day: Pick start day and end day from the calendars.

Weekly  Monthly  Specific day  
Starts from    
Ends at    
June, 2014  
Su Mo Tu We Th Fr Sa  
25 26 27 28 29 30 31  
1 2 3 4 5 6 7  
8 9 10 11 12 13 14  
15 16 17 18 19 20 21  
22 23 24 25 26 27 28  
29 30 1 2 3 4 5

### 4.10.3 Schedule priority

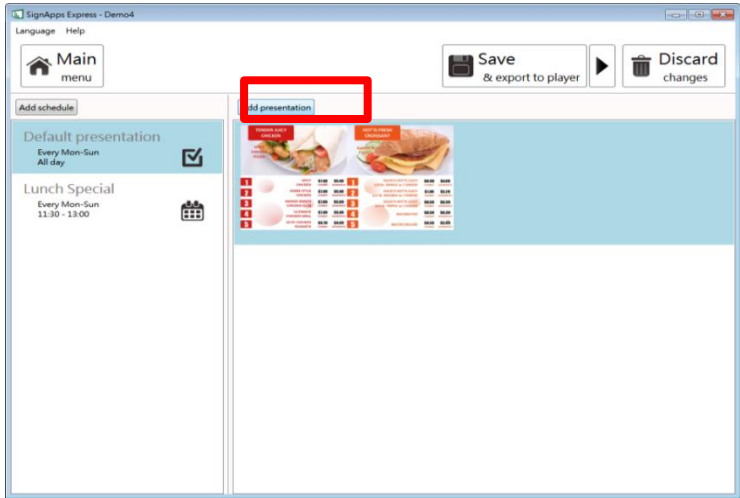


- Default presentation is the initial schedule which is designed to play 24/7. It has lowest priority and will be surpassed whenever there are overlapping schedules.
- As shown on diagram above, specific day(s) event has the highest priority for playback when the schedules are overlapping. Monthly schedule has 2nd highest priority, then it's weekly schedule.
- Among same recurrence type, newest added schedules will take higher priority ( e.g. Weekly 2 is the newly added schedule ).

|  |                                     |
|--|-------------------------------------|
| <p>Default presentation</p> <p>Every Mon-Sun<br/>All day</p> | <input checked="" type="checkbox"/> |
| <p>Weekly 1</p> <p>Every Mon-Sun<br/>00:00 - 18:00</p>       | <input type="checkbox"/>            |
| <p>Weekly 2</p> <p>Every Mon-Sun<br/>00:00 - 18:00</p>       | <input checked="" type="checkbox"/> |

### 4.10.4 Add presentations to an event

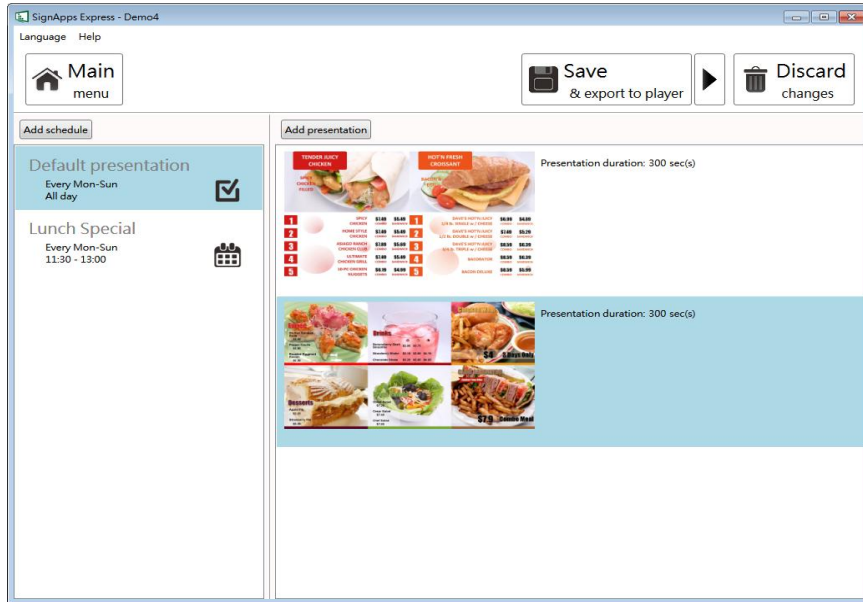
1. Click Add presentation.



2. Select template.



### 3. Edit the newly added presentation.

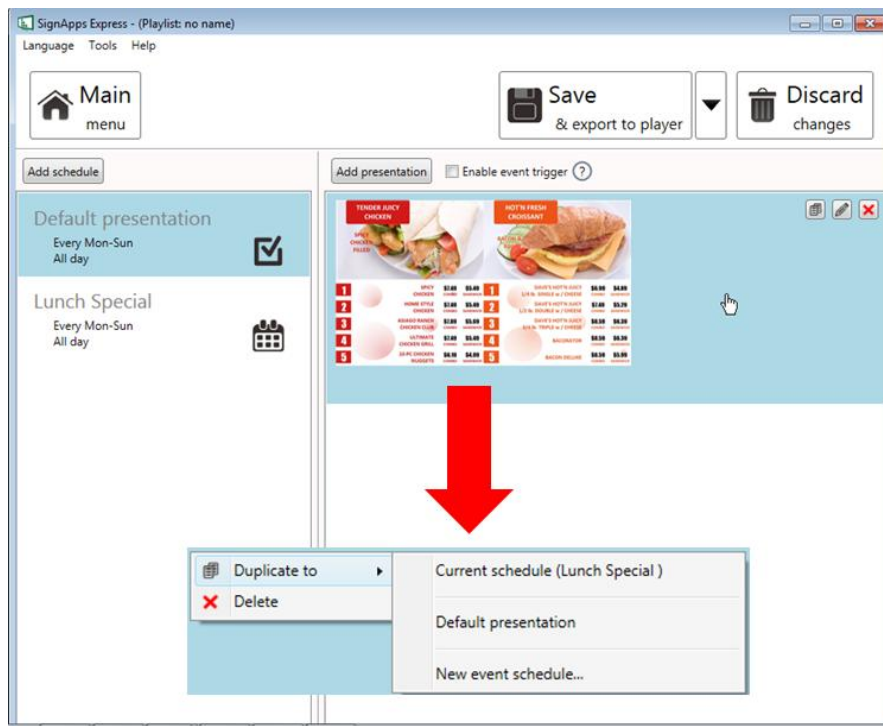


When looping presentation has more than 1 presentation, duration box will appear. Click on Presentation duration number (300) to change duration, default duration is 300 seconds.



### 4.10.5 Duplicate a presentation to an event

Right click on presentation and select Duplicate to, then select a destination.

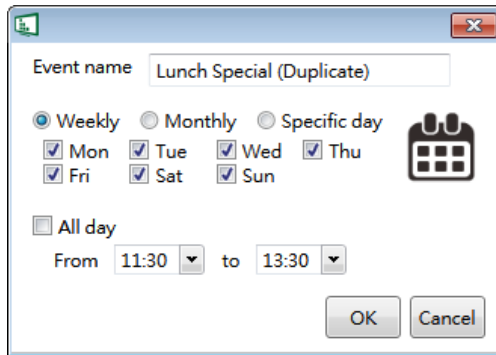


### 4.10.6 Duplicate an event

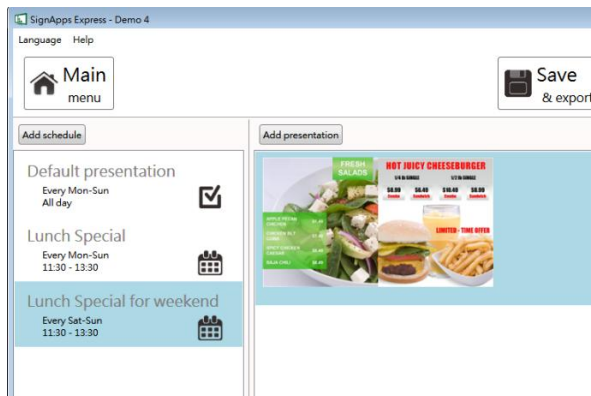
1. Right click a schedule and select Duplicate or click duplicate button of a schedule.



2. Edit schedule of new event

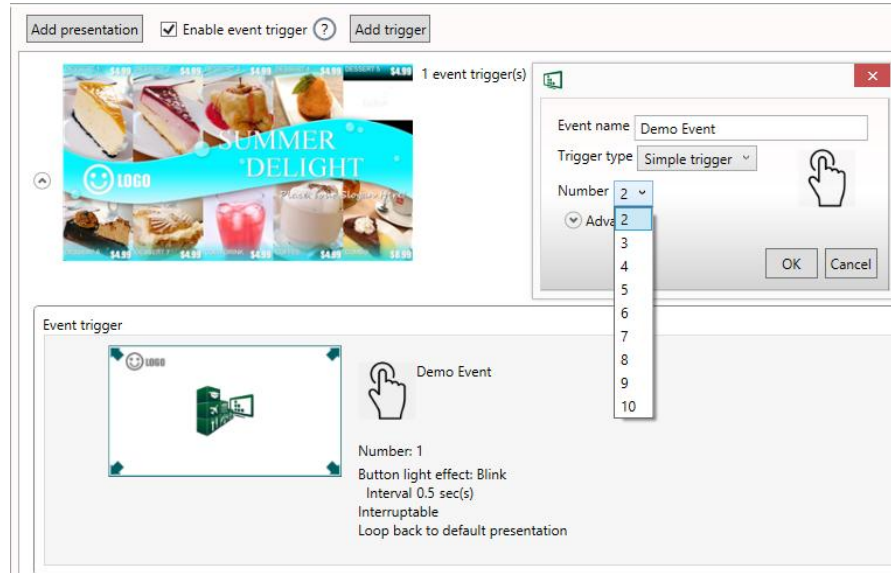


3. Click OK to save new event



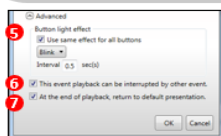
### 4.10.7 Adding trigger event

Enable event trigger and add trigger to current presentation



Trigger Event lets you to add event trigger into presentation, the trigger source can be touch button event and motion sensor event from smart signboard, or input event from PIO-101.

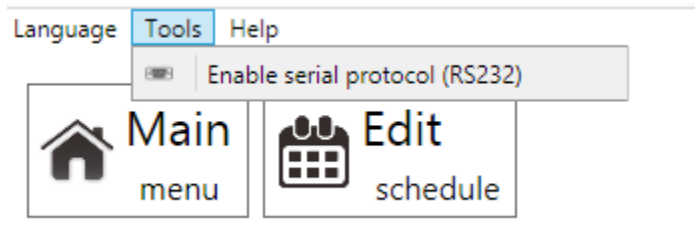
### Trigger Event Editor



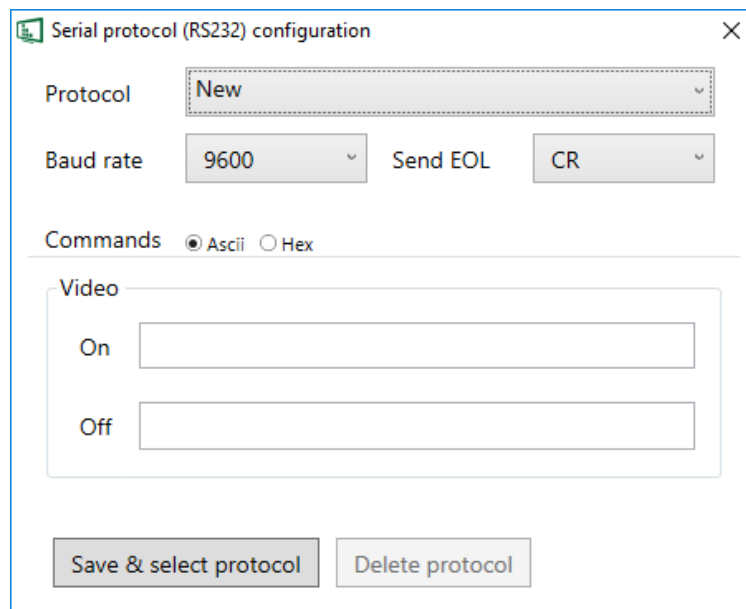
- 1 Name of the trigger event
- 2 Trigger type: simple trigger or motion sensor
- 3 Schedule up to 10 simple triggers
- 4 Advanced control for simple trigger
- 5 Advanced: control button light effect
- 6 Advanced: option to disable interrupt for the trigger
- 7 Advanced: option to disable loop back to default presentation

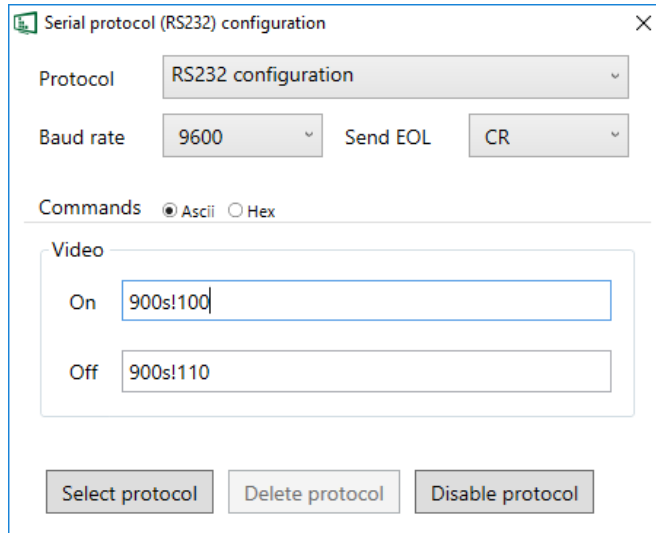
#### 4.10.8 Send power on and standby RS-232 command to display

Select a playlist and launch the configuration menu from Tools -> Enable serial protocol (RS232) as shown below.



Configure baud rate, send EOL , video on ( display power on ), video off ( display standby) as shown below. Each playlist can use a serial protocol to manage display power on/off. The configured values of the serial protocol could be modified once the protocol be selected and enabled. Please consult display manufacturer for the necessary configuration and serial commands.



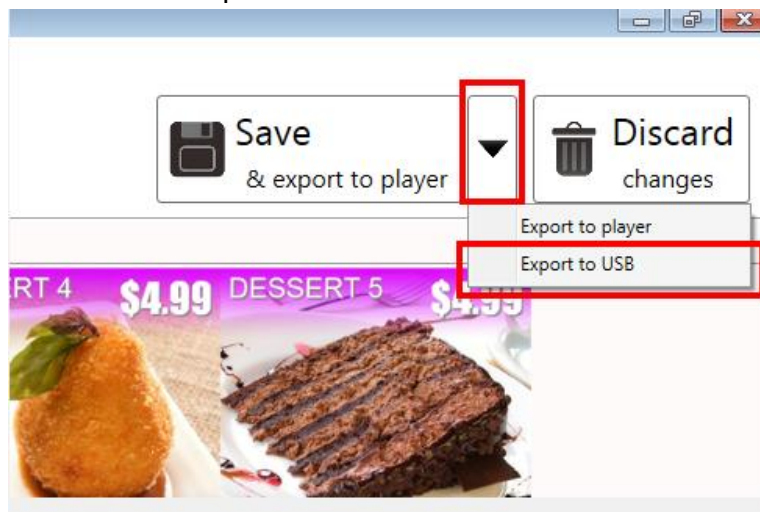


## 4.11 Export Playlist

### 4.11.1 Export playlist via USB

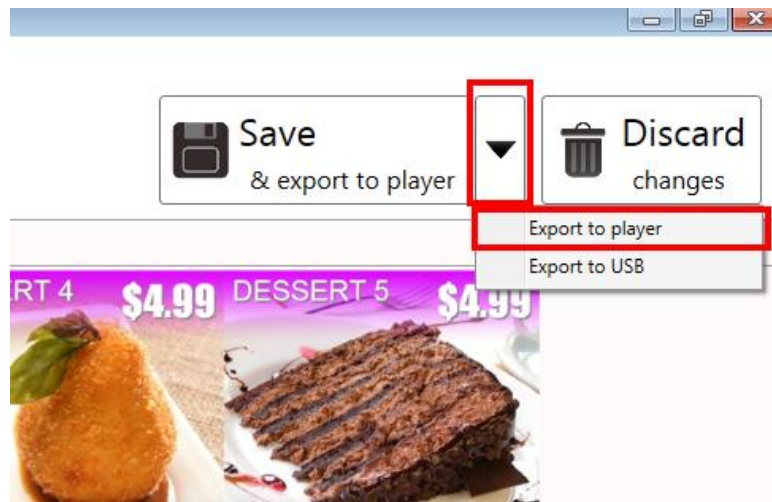
Click export button and click Export to USB, and then select the correct location for export.

*Note:*  
SignApps will remember your action, so next time you only need to click 'Save' to export



### 4.11.2 Export playlist via Network

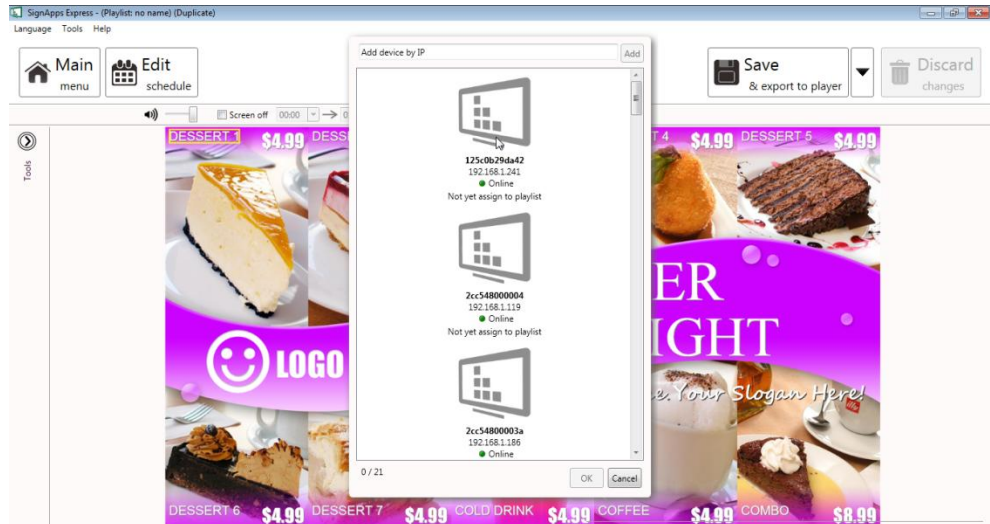
1. Click export button and click Export to player.



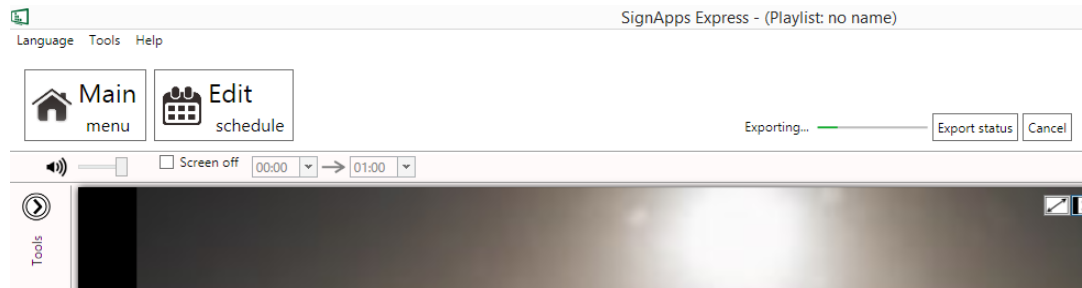
2. Select devices on your network or add them by typing their IPs

**Note:**

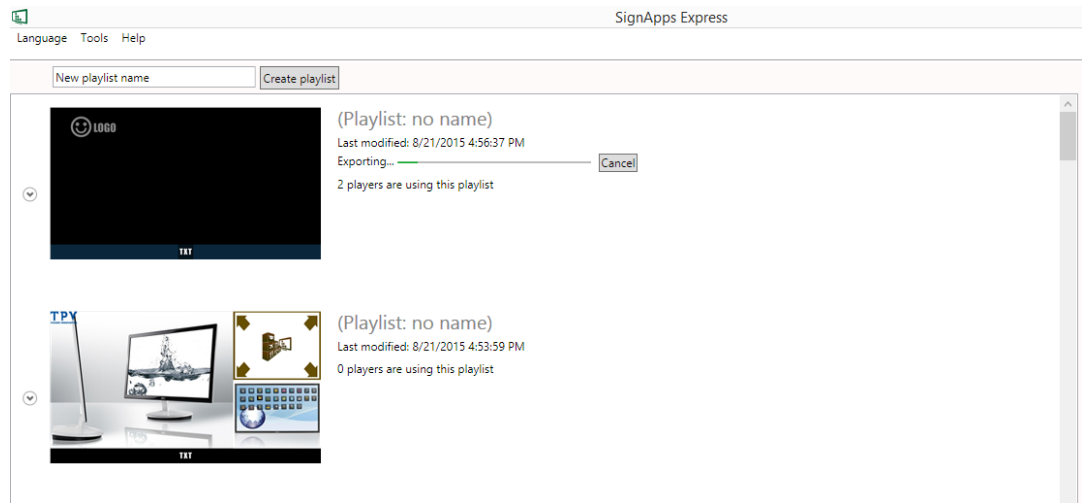
*If a player is already associated with another playlist, it will show what playlist being associated previously here*



3. Export runs in the background, allowing you to navigate away and continue other tasks while the playlist is exporting.



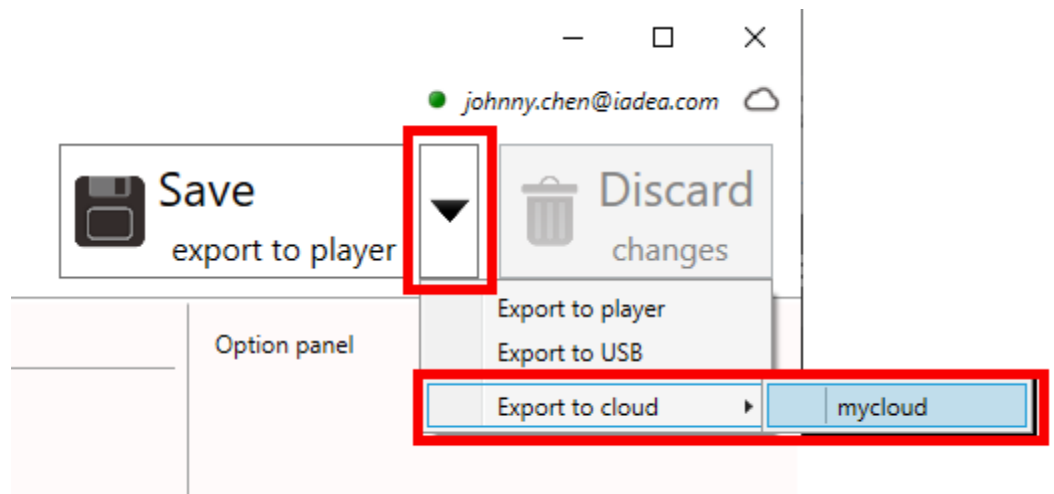
Exporting status displays in main menu as well:



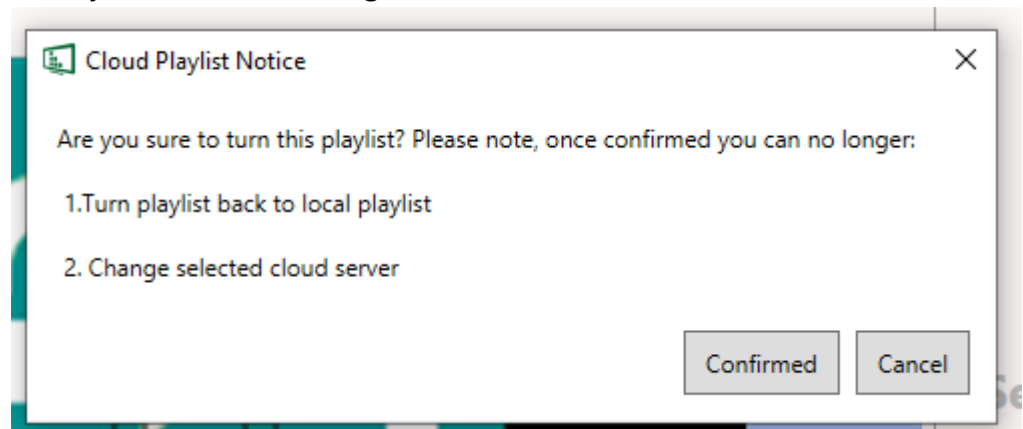
### 4.11.3 Export playlist via Cloud

To export via Cloud, see Section [4.12 SignApps Cloud Update Function](#).

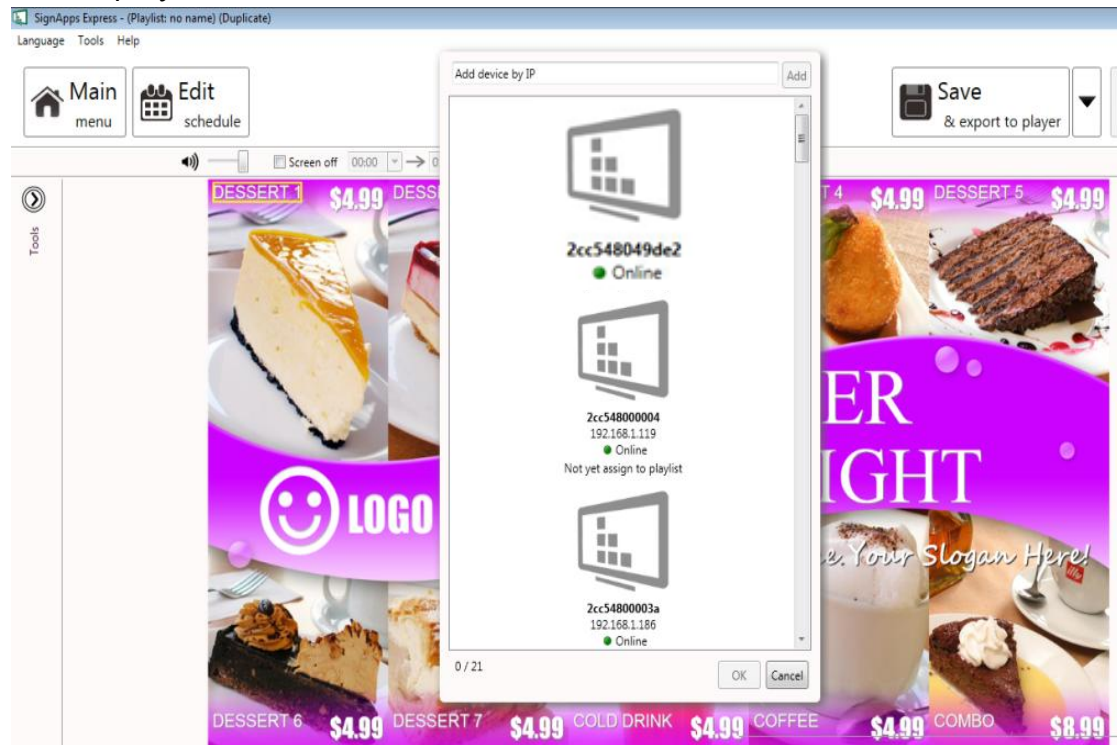
1. Click export button and select Export to Cloud and Select your Cloud folder.



2. A Cloud Playlist Notice will appear. Once a playlist is converted to a Cloud Playlist, it loses certain local playlist privileges and cannot be saved locally or loaded on another computer. Save the playlist locally before converting.

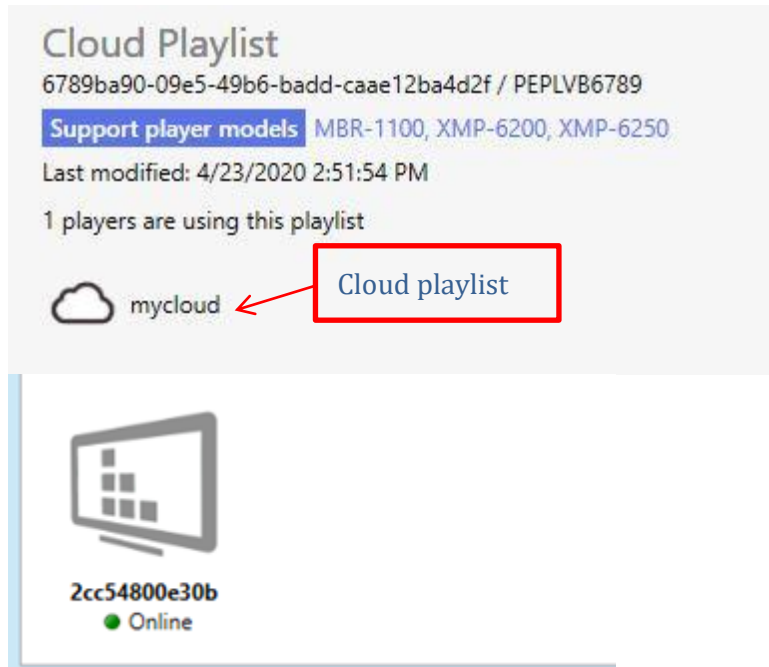


3. Players that are connect to your SignApps Cloud account will populate. To differentiate between local and cloud players, cloud players will only display MAC ID or player name. Local players will still display IP address.



4. Playlist will export to the Cloud first. Then the players will download from the server. Cloud Player will display a downloading icon and display Online when complete.

- Cloud Playlist will display Last Export/Download Time stamp. It will also display Associated Players and Cloud Playlist Icon.



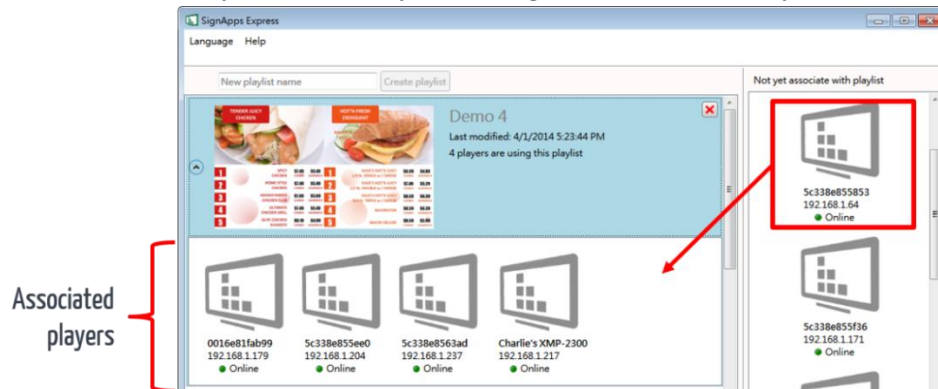
- ❖ Device heartbeat under cloud playlist will display heartbeat information from the cloud server. For example, if the player is in your LAN but loses connection to the network, it will show as offline.

#### 4.11.4 Player association

After export, the players are associated with the playlist and will be listed under the playlist in the main menu.

You can also assign player to playlist by dragging player and drop to playlist in the main menu.

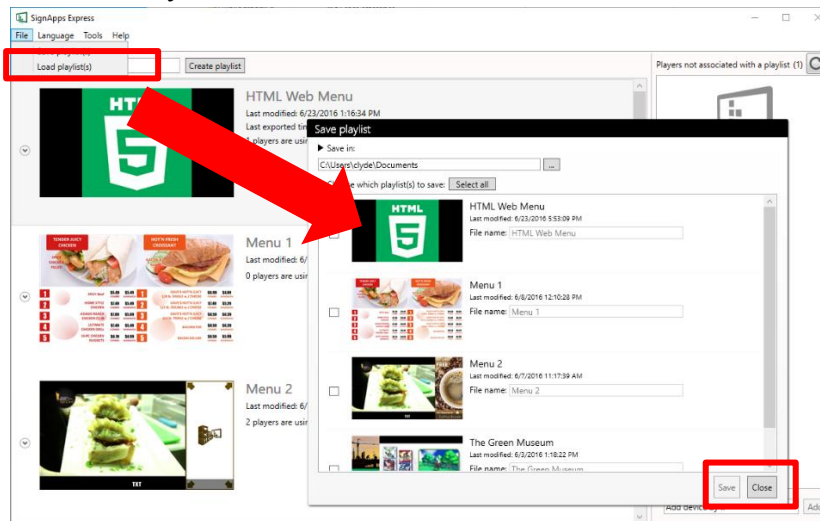
- ❖ Cloud Players can only be assigned to Cloud Playlist.
- ❖ Local Players can only be assigned to Local Playlist.



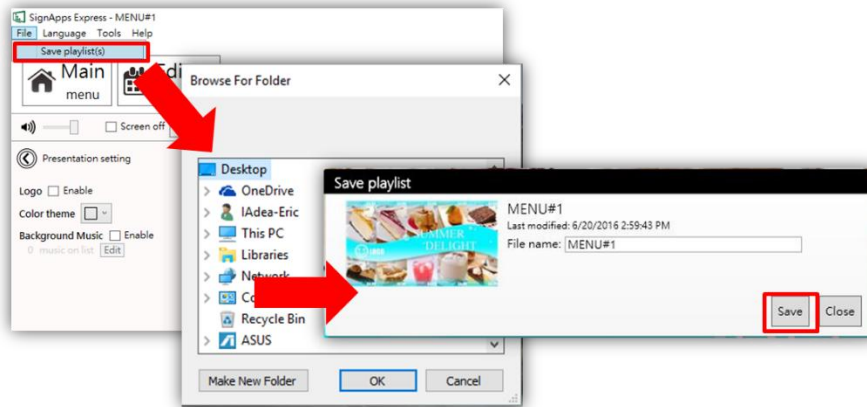
## 4.12 Save / Load Playlist

### 4.12.1 Save playlist(s)

To migrate your playlist to another computer can be done easily with save / load playlist function. You can save multiple playlists at main menu. Providing save location and file name to saved playlists, then click on save when ready.

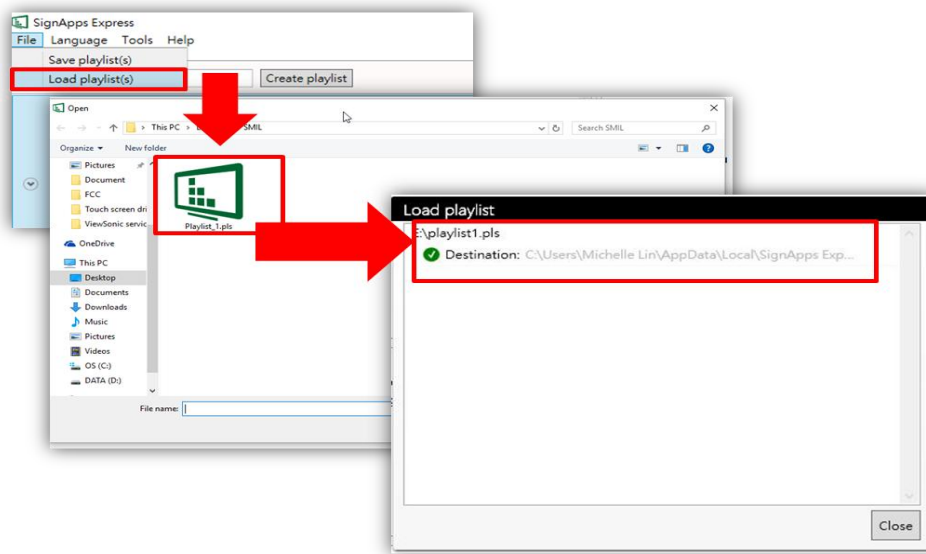


Or you can save individual playlist when editing the playlist:



### 4.12.2 Load playlist(s)

Load the playlist to software from File menu. Press ctrl + select playlist files to load multiple playlists at once.



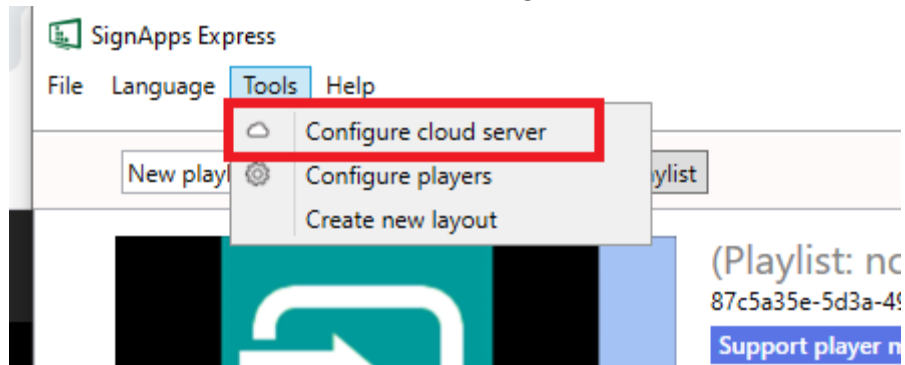
### 4.12.3 Save/Load Cloud Playlist

Cloud playlist cannot be saved and loaded through Save/Load playlist feature. Cloud playlist will automatically be saved and loaded once SignApps Account is logged in.

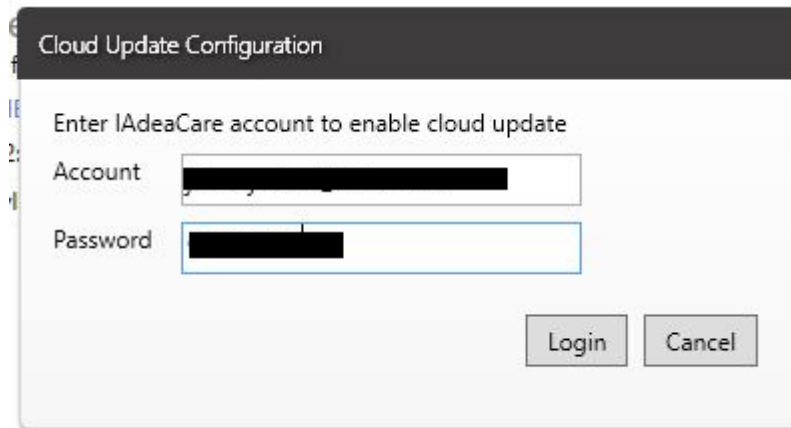
## 4.13 SignApps Cloud Update Function

### 4.13.1 Initial Setup

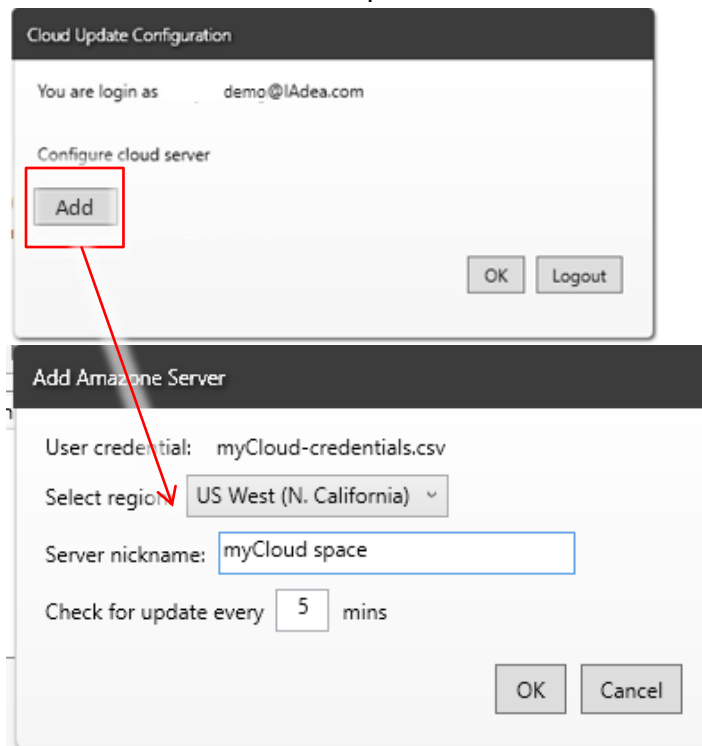
1. From the Tools Menu, select Configure Cloud Server.



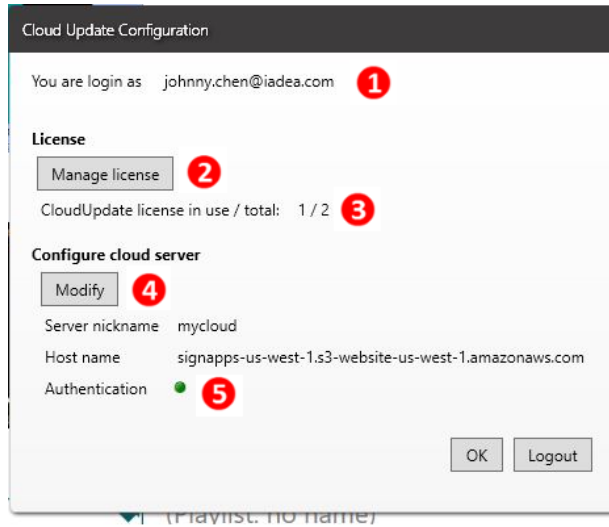
2. Login with your IAdeaCare credentials.



3. On your initial login, you will need to select the closest region to you (This will allow for the most efficient upload and downloads to and from the cloudserver). Then, you will need to name your Cloud Folder. Finally, please configure how often you want the software to check the server for updates.



### 4.13.2 Cloud Server Dashboard

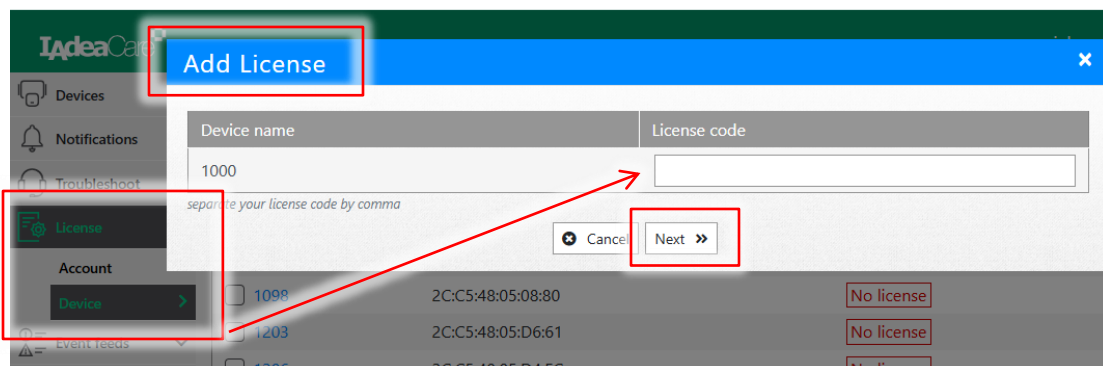


- 1 IAdeaCare Credentials
- 2 Manage IAdeaCare licenses.  
Opens web browser to IAdeaCare website.
- 3 Displays Available Licenses/ In use licenses.
- 4 Modify cloud server settings.  
(Folder Name and Update time)
- 5 Authentication/Connection Status


❖ For IAdeaCare, see [IAdeaCare user manual](#).

### 4.13.3 Adding Cloud Update License

1. In Cloud Server Dashboard, select Manage License and log into your IAdeaCare account. Go to License Tab, Select Player, and Add License via CLOUD license.



2. Activated Cloud License will populate under the Miscellaneous Section of the License Tab.

| IAdeaCare license | Miscellaneous   |
|-------------------|---|
| No license        | Type: Cloud update <br>Expiration date: 2018-11-08 |

3. Once players are registered to your IAdeaCare account and the Cloud Licenses are activated, the players will automatically populate in SignApps when logged into the SignApps Cloud function.

#### *4.13.4 SignApps Cloud Limitations*

- Storage Limitation
  - **10GB** for 1<sup>st</sup> player, + **1GB** per additional player.  
(Purchase additional storage by adding more player licenses)
  - Storage will auto-purge storage along with content changes in playlist.
  - When storage approaches maximum cap (less than 10%) customer will receive a reminder email.
  - When storage is over the limit, export will fail and error message will be sent to email.
- Player limitation
  - Can connect up to 500 media players.
- License expiration
  - Reminder email will be sent 4 weeks before license expiration date.
  - After license expires, user will not be able to update new content to the expired player. The expired player will continue to play last downloaded content.

## 4.14 Configure Player

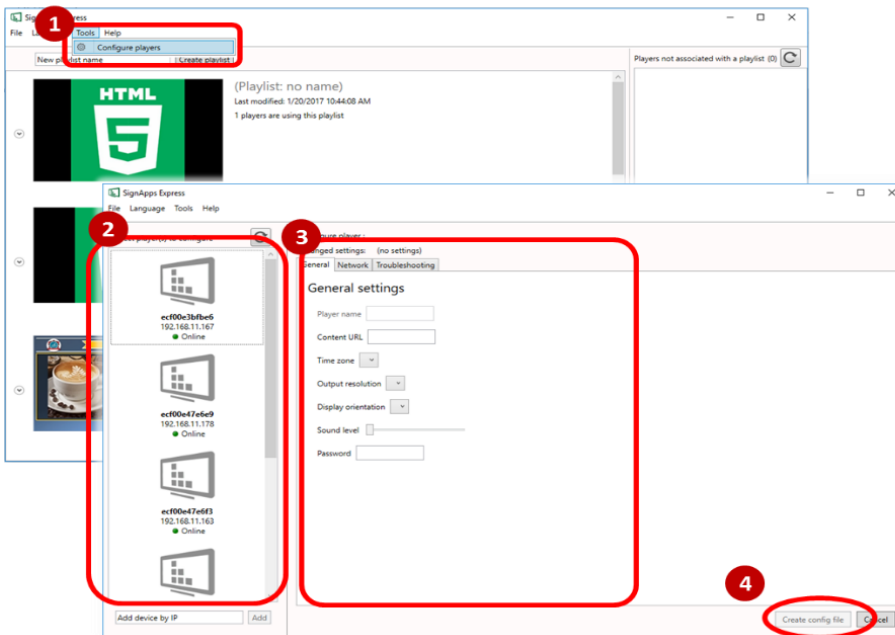
### 4.14.1 Features

- Install players first, then configure all devices at once with Ethernet connection.
- Easily change device settings remotely. (Static IP, Domain)



### 4.14.2 Device Configuration

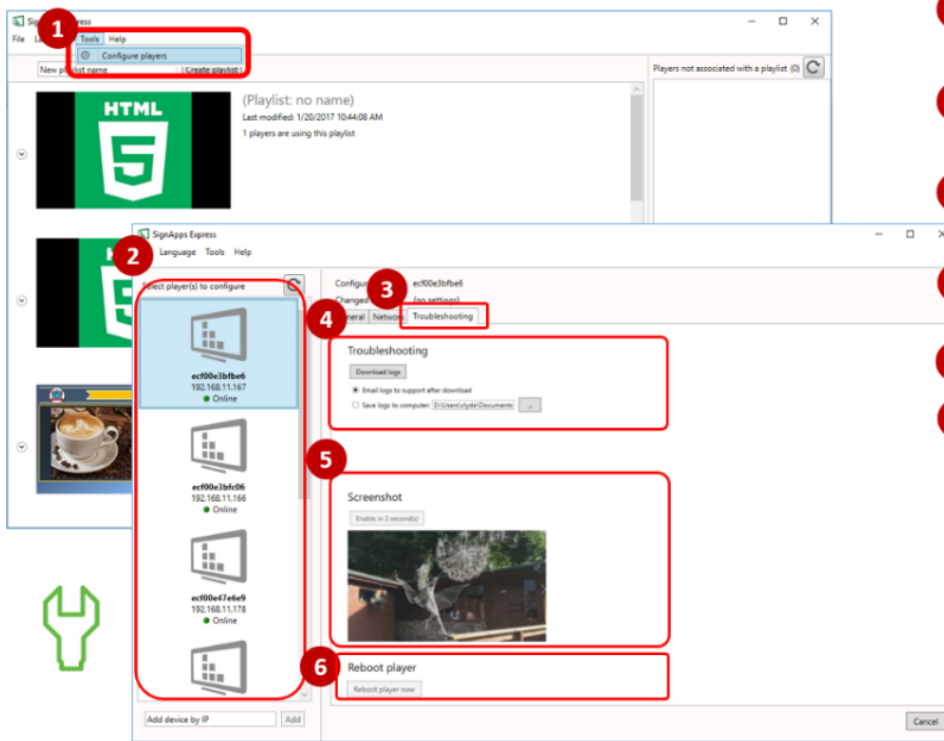
Configure general and network settings on devices all at once.



- 1 Click configure players from tools menu.
- 2 Select the player(s) for configuration.
- 3 Input the settings.
- 4 Click Apply & Reboot to apply setting(s) to device(s).

### 4.14.3 Device Troubleshooting

Download DEBUG logs and send to IAdea support. It will also allow you to get a screenshot and reboot the device.

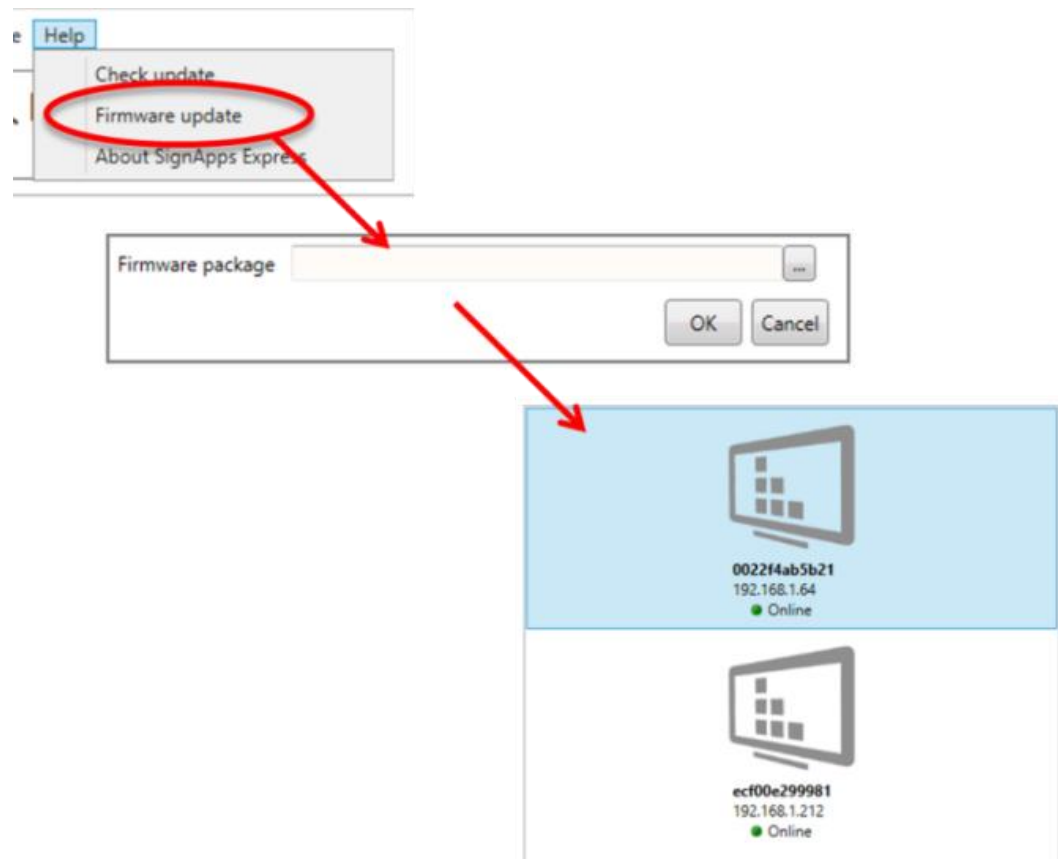


- 1 Click configure players from tools menu.
- 2 Select the player(s) to troubleshoot.
- 3 Clicking on troubleshooting tab.
- 4 Download the logs and send to IAdea support.
- 5 Obtain screenshot.
- 6 Reboot player remotely

## 4.15 Firmware Update

1. Go to Help → Firmware update, select the Firmware package and click OK
2. Select the player you need to update

Firmware package can be downloaded from <https://support.iadea.com>

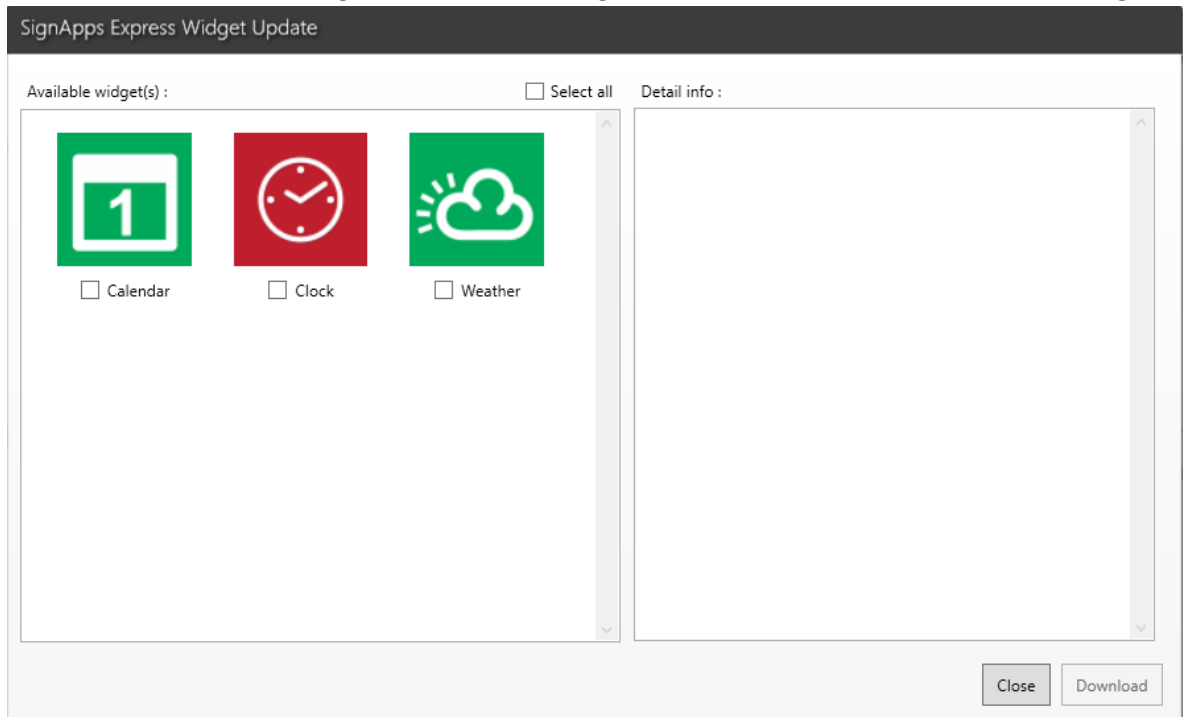


## 4.16 Widget Update

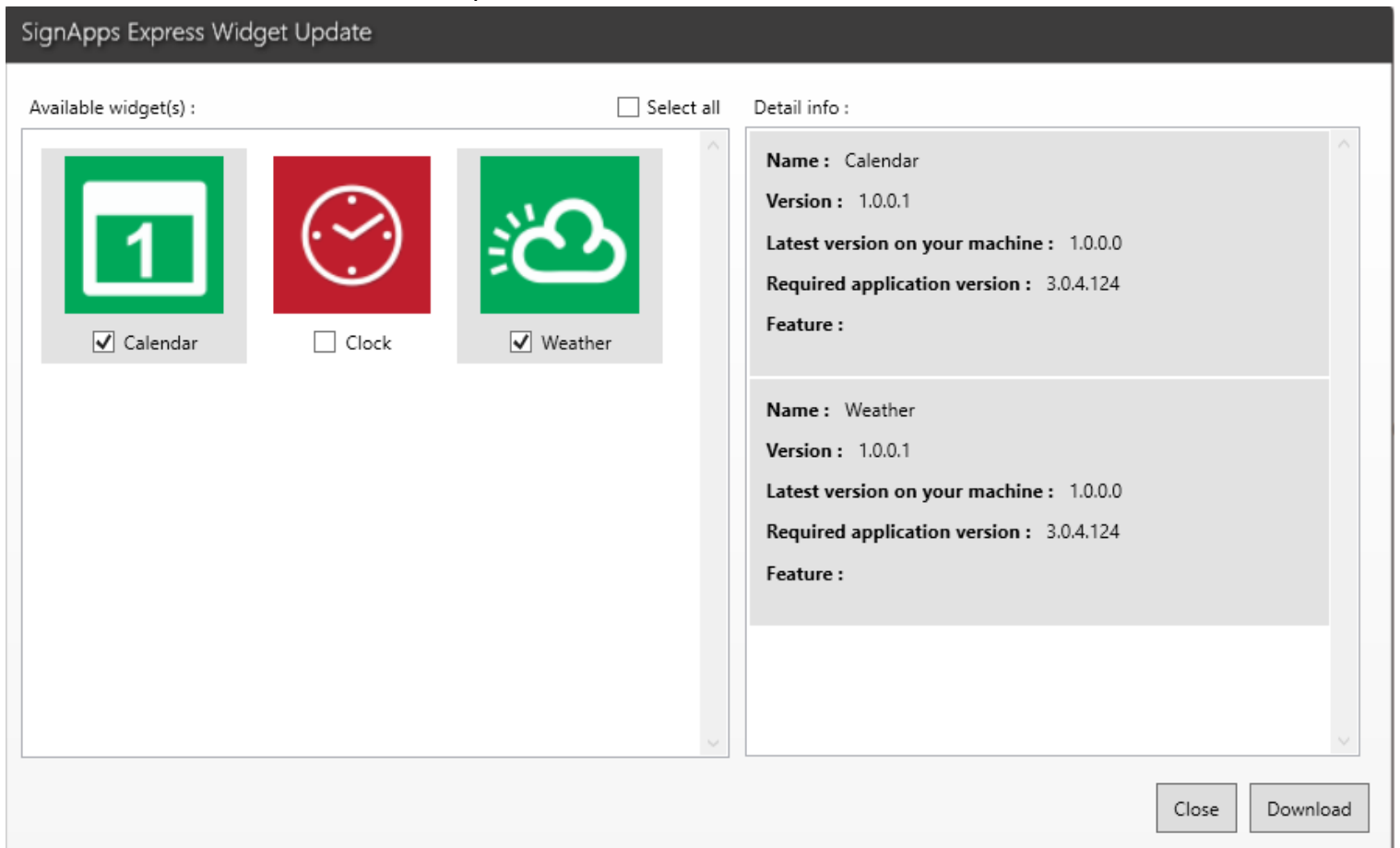
### 4.16.1 Update the widget

Click the 'update widgets' to update widget from 'Help'.

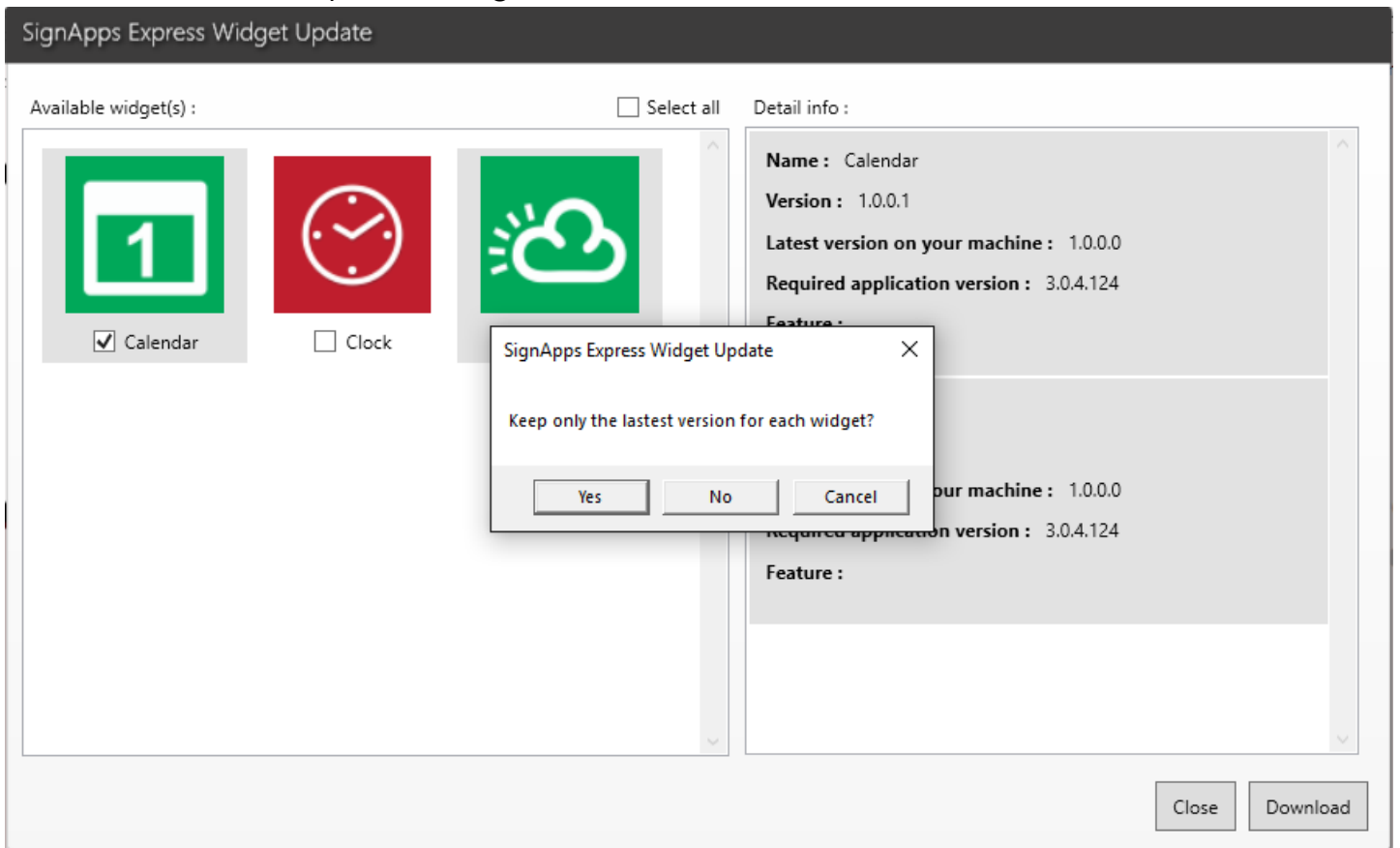
You will see Widget Update' dialog shown to let user choose the widgets.



Left panel show available widget(s) to update (support multi-select).  
Right panel show the update information when user choose a widget from the left panel..



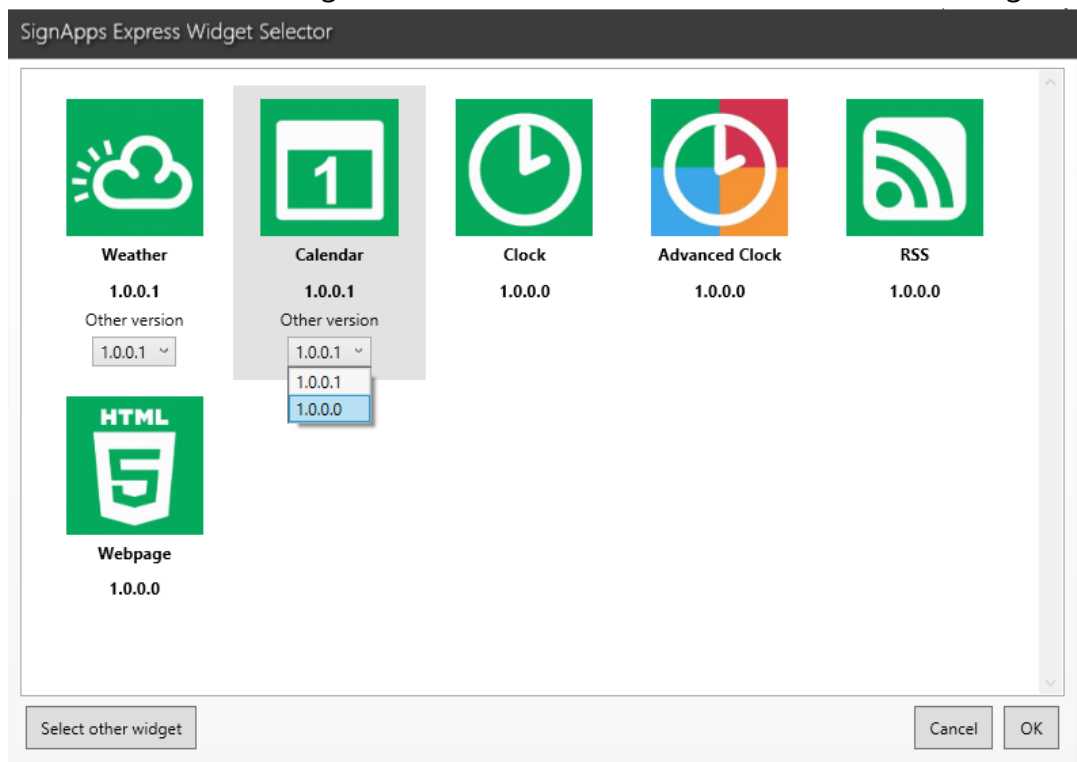
When click download, SignApps will ask if to keep only the latest version for updated widgets.



| Options | Results   |
|---------|---|
| Yes     | All old widgets will be removed, only the new widgets will be reserved. |
| No      | Keep both the old widgets and the newly updated widgets.                |

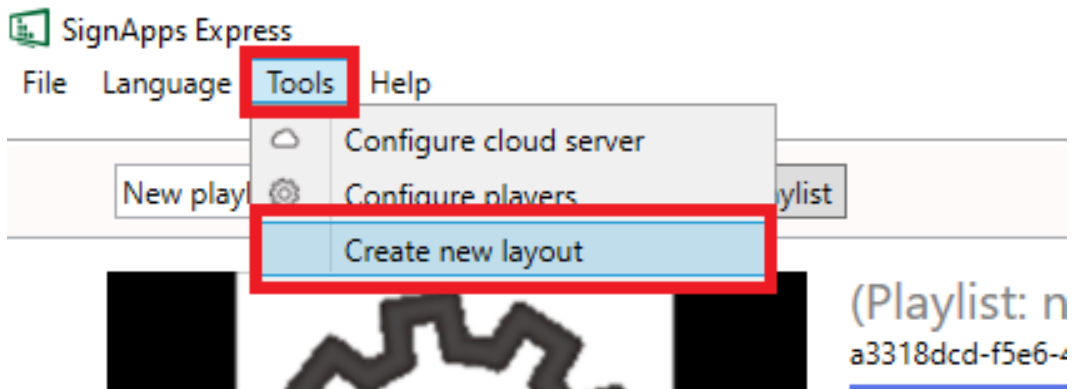
### 4.16.2 Use the widget

If a widget has another old version, user could choose the old version. The 'Select other widget' button is for user to select other local widgets.

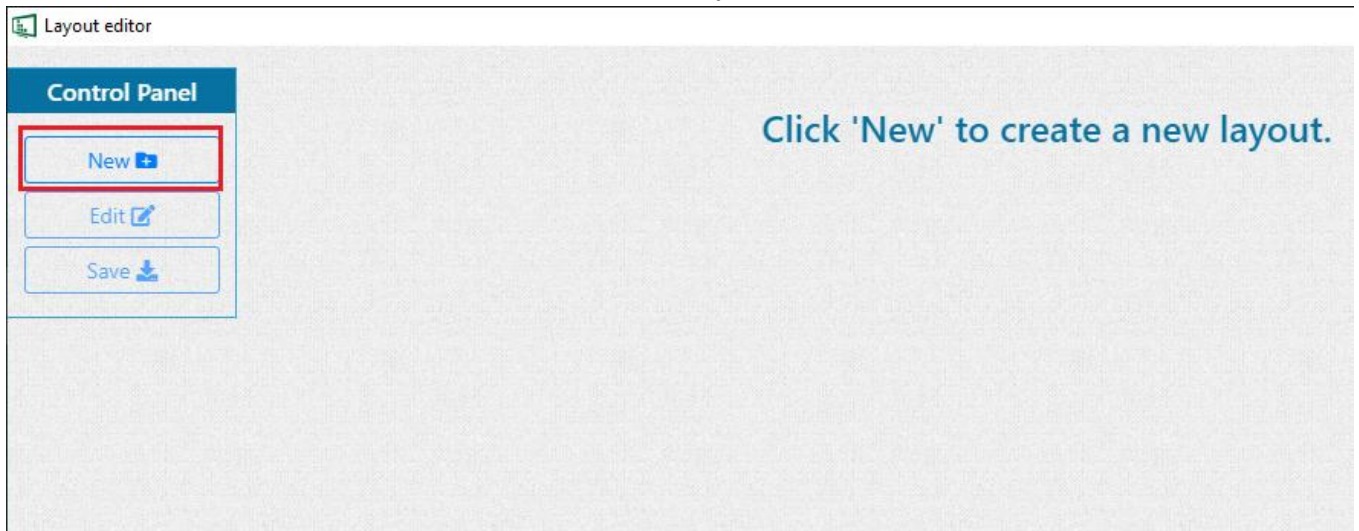


## 4.17 Layout Editor

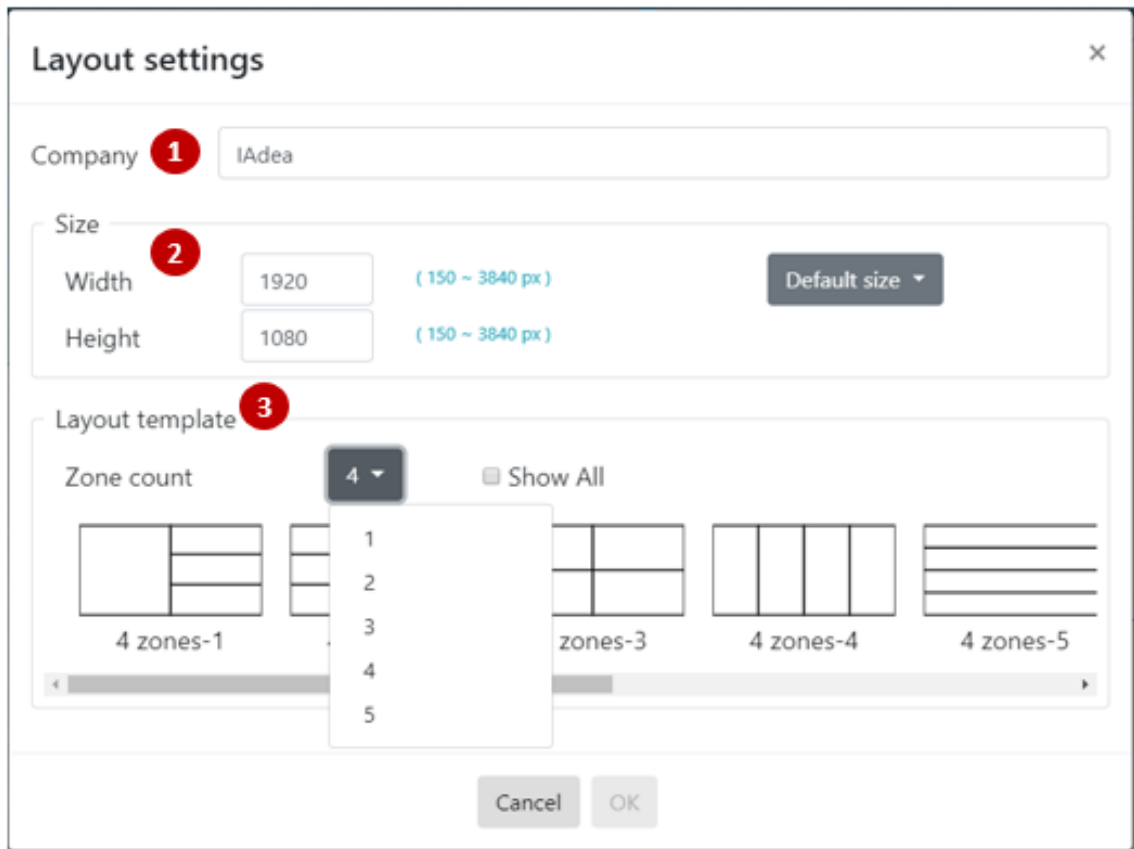
1. Click 'Create new layout' from 'Tool'.



2. Click 'New' to create a new layout.

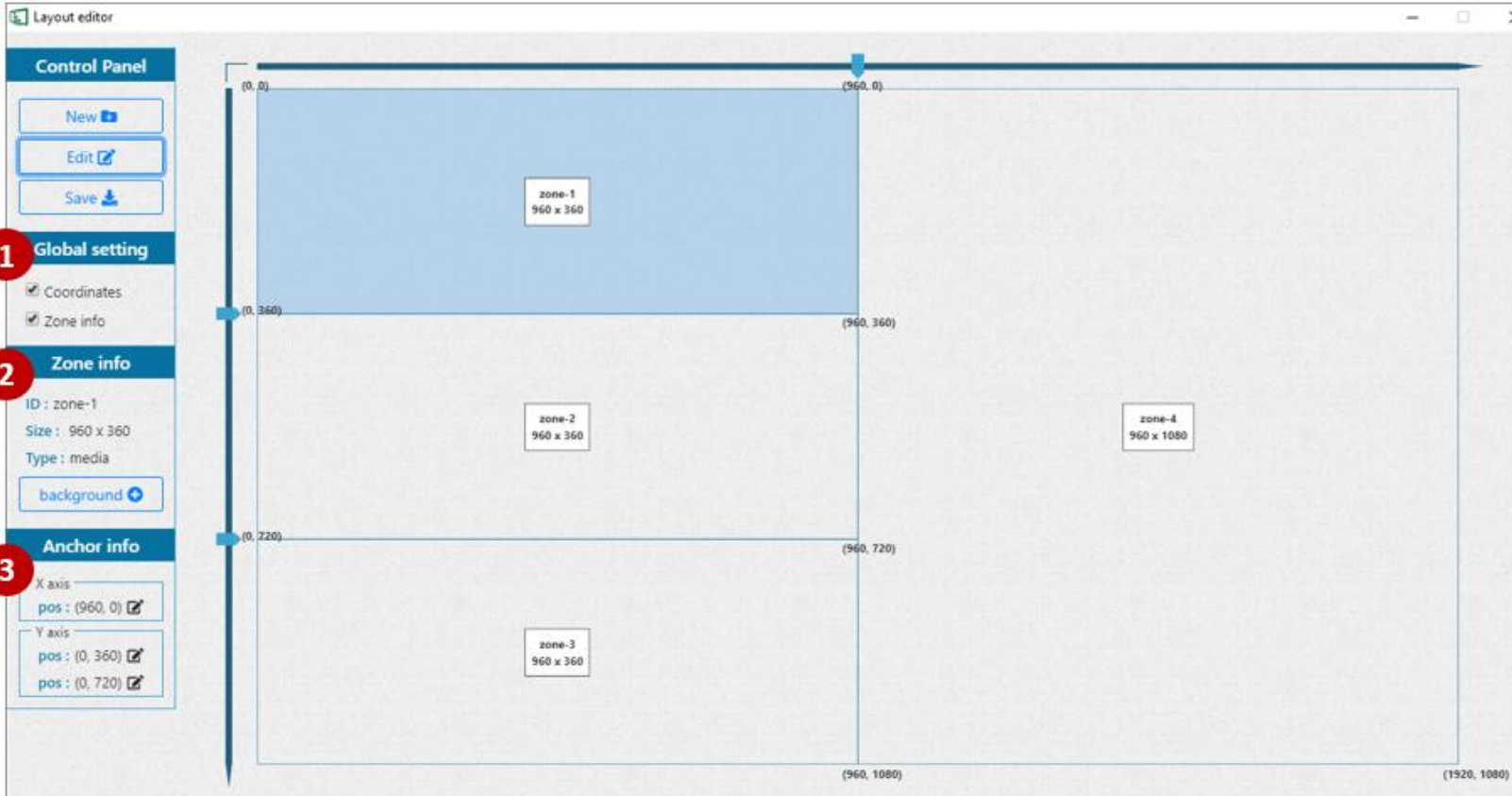


3. Input the Company name, the size of the layout and choose Zone count from drop menu



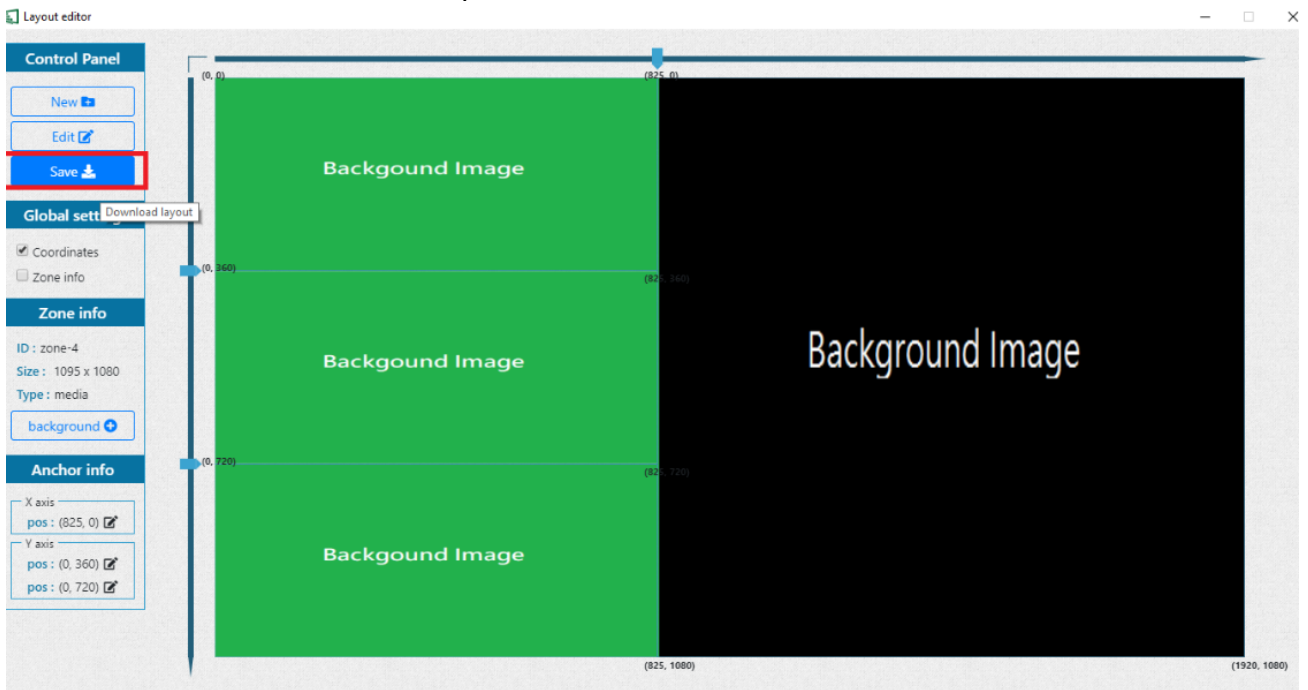
- 1 The Company name of the layout.
- 2 Input the size manually or choose from the default list
- 3 Choose the Zone count from drop-down menu and choose the template.

4. Edit the global settings, background and anchor info.



- 1 Check it to display the coordinates and zone info in the template area.
- 2 Display the info of each zone and add the background image for each zone.
- 3 Edit the anchor info manually or drag the anchor in the template area directly.

5. Make sure to add the background to each zone then click 'Save' to save the template.



- Go back to main page to create a new playlist, you will see the template is listed in the template list.

Model : All models / Legacy models

