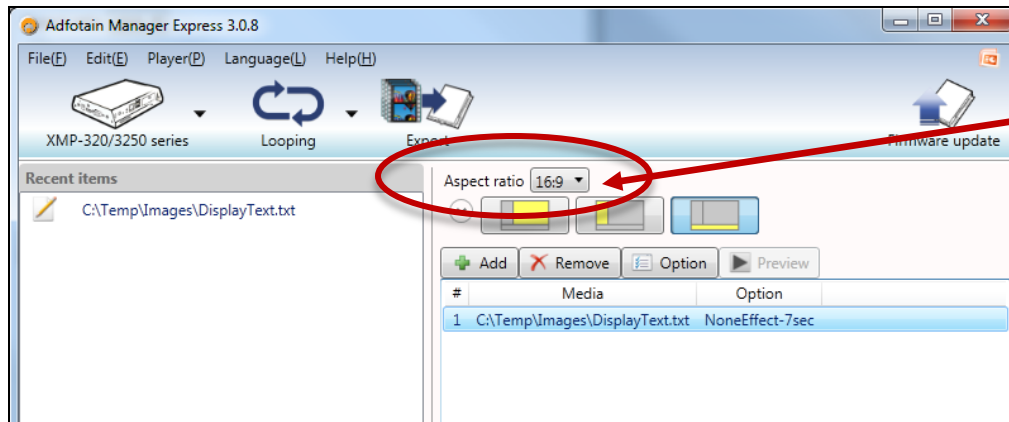


Use Portrait Mode in Adfotain Manager Express



Click the Layout Aspect Ratio

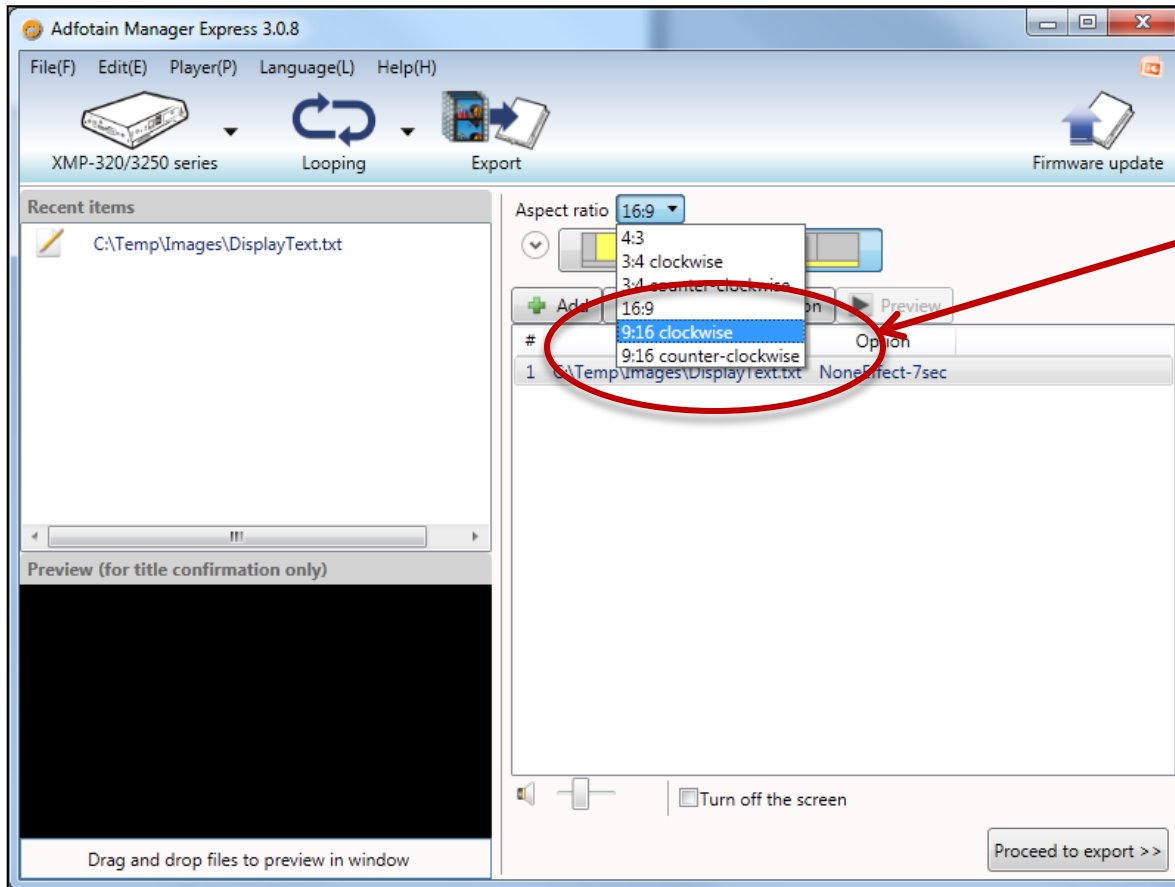


- Depends on your screen's aspect ratio, you can set different aspect ratio for your player

- It is recommended to use the same aspect ratio as your screen



Select the Portrait Mode layout

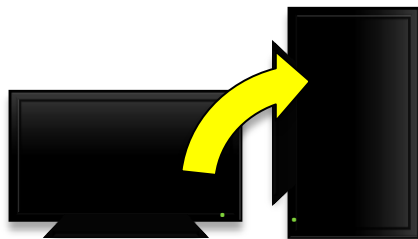


In **Aspect ratio**, select **clockwise** or **counter-clockwise** layout to schedule media in portrait mode

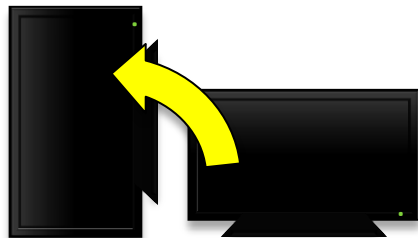
Auto Rotate in Portrait Mode

1

Rotate screen



Clockwise



Counter-Clockwise

2

Prepare Images or PPT in portrait mode



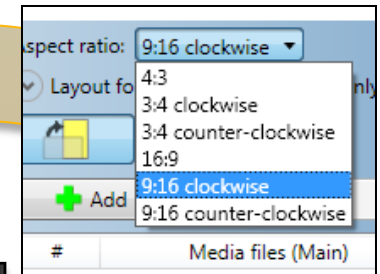
Image



PowerPoint

3

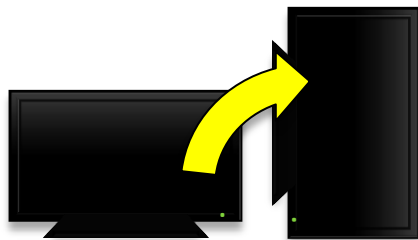
Choose aspect ratio, schedule file, then export



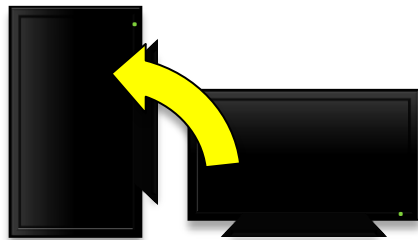
Rotate Video in Portrait Mode

1

Rotate screen



Clockwise



Counter-Clockwise

2

Prepare portrait video in landscape

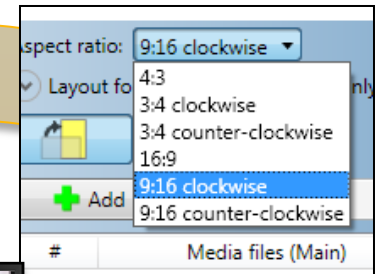


Convert video
from portrait to
landscape



3

Choose aspect ratio, schedule file, then export



How to Rotate Video

- ▶ Using recommended WinMEnc to rotate video
 - Please refer to <http://www.iadea.com/support/content/converting-videos-winmenc> . Follow the instruction on web site, using a free converter and IAddea profiles to rotate your video

