

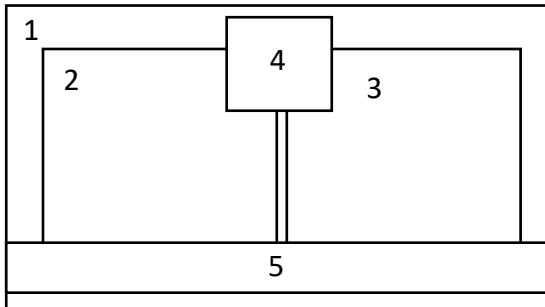
SignApps Express Customized Template Services

Complete the customized template service request in just a few steps

1. Provides the detail dimensions of the layout.
2. Indicate the content type for each zone. Current available content types are:
 - G: general content type such as video, image, PowerPoint, and widget
 - T: ticker content type which can accept text or widget
 - L: logo content type which can accept image and always place on top of all layouts
 - I : input box which allows user to type text on it
3. Submit above information to your IDea sales representative to obtain a quotation, the customize template service starts at \$50 per template.
4. Upon complete of template creation, you will be receiving a .tsk template file. Copy this file to SignApps Express' template folder under program files folder. (Open the file explorer then copy and paste this path %PROGRAMFILES(x86)%\SignApps Express\Templates).

Appendix

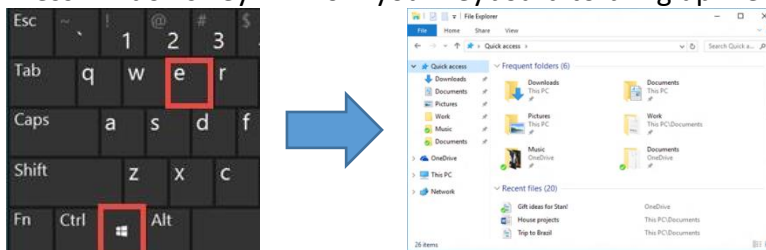
Layout dimension and content type example



#	Type	X	Y	Width	Height
1	G	0	0	1920	1080
2	G	100	100	850	880
3	G	960	100	850	880
4	L	860	20	200	200
5	T	0	950	1920	100

Locate template folder

1. Press windows key + E from your keyboard to bring up file explorer



2. Copy and paste %PROGRAMFILES(x86)%\SignApps Express\Templates to file path

